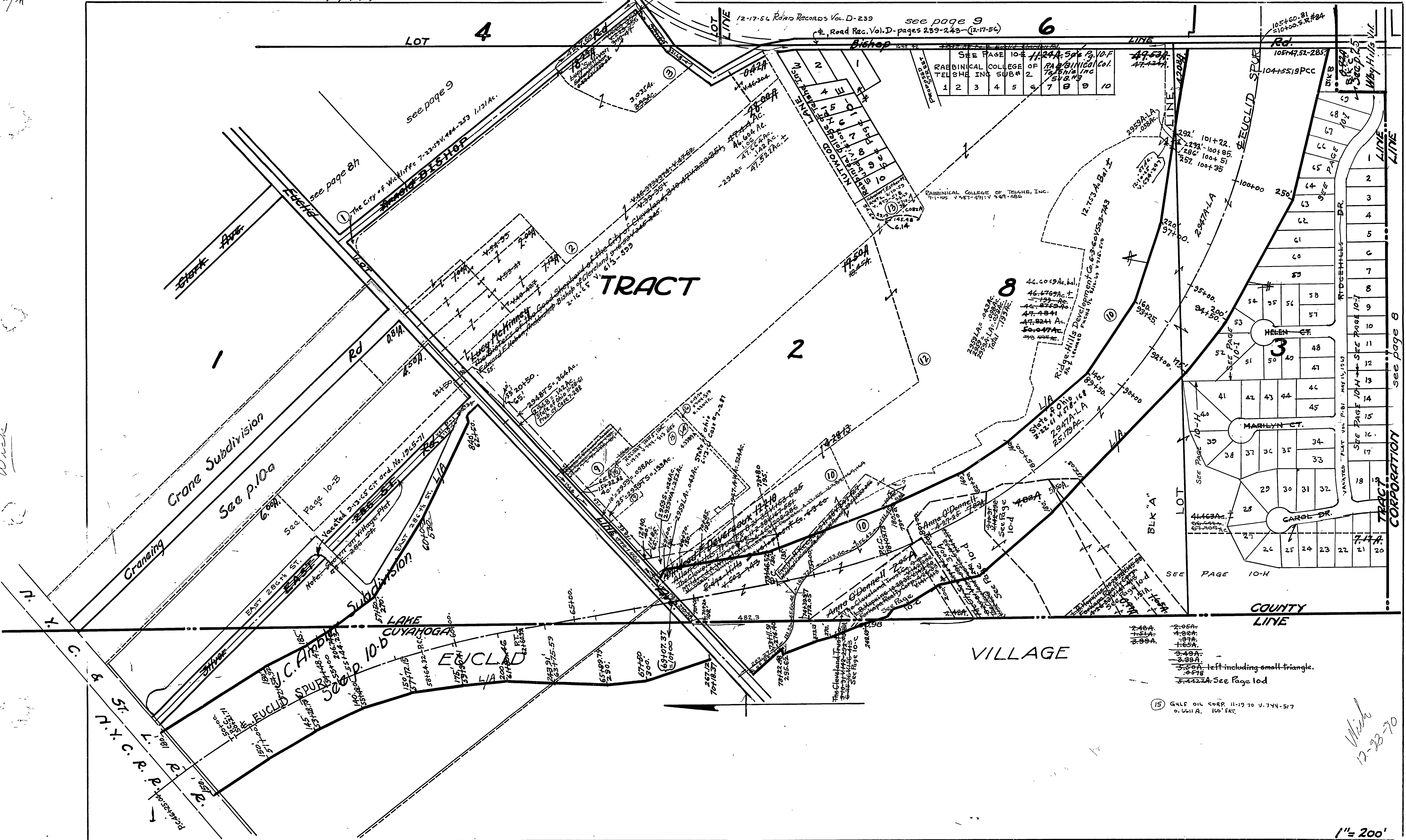


CALLY/SH

Deleted- 4, 5, 6, 7, 8, 11

10



SEE PAGE	IO#	1124A	50	19	10-F
1	2	3	4	5	6
7	8	9	10		

- 2.46A
- 4.82A
- 8.99A
- 1.97A
- 1.65A
- 3.49A
- 3.99A
- 3.59A left including small triangle.
- 6.67B
- 5.4222A See Page 10d

(15) GULF OIL CORP. 11-19 70 V. 744-517
0.6611 A. 160' PAT.

Wick
12-23-70

1" = 200'

Wick

see page 8

SEE PAGE 10-H

SEE PAGE 10-I

SEE PAGE 10-J

SEE PAGE 10-K

SEE PAGE 10-L

SEE PAGE 10-M

SEE PAGE 10-N

SEE PAGE 10-O

SEE PAGE 10-P

SEE PAGE 10-Q

SEE PAGE 10-R

SEE PAGE 10-S

SEE PAGE 10-T

SEE PAGE 10-U

SEE PAGE 10-V

SEE PAGE 10-W

SEE PAGE 10-X

SEE PAGE 10-Y

SEE PAGE 10-Z