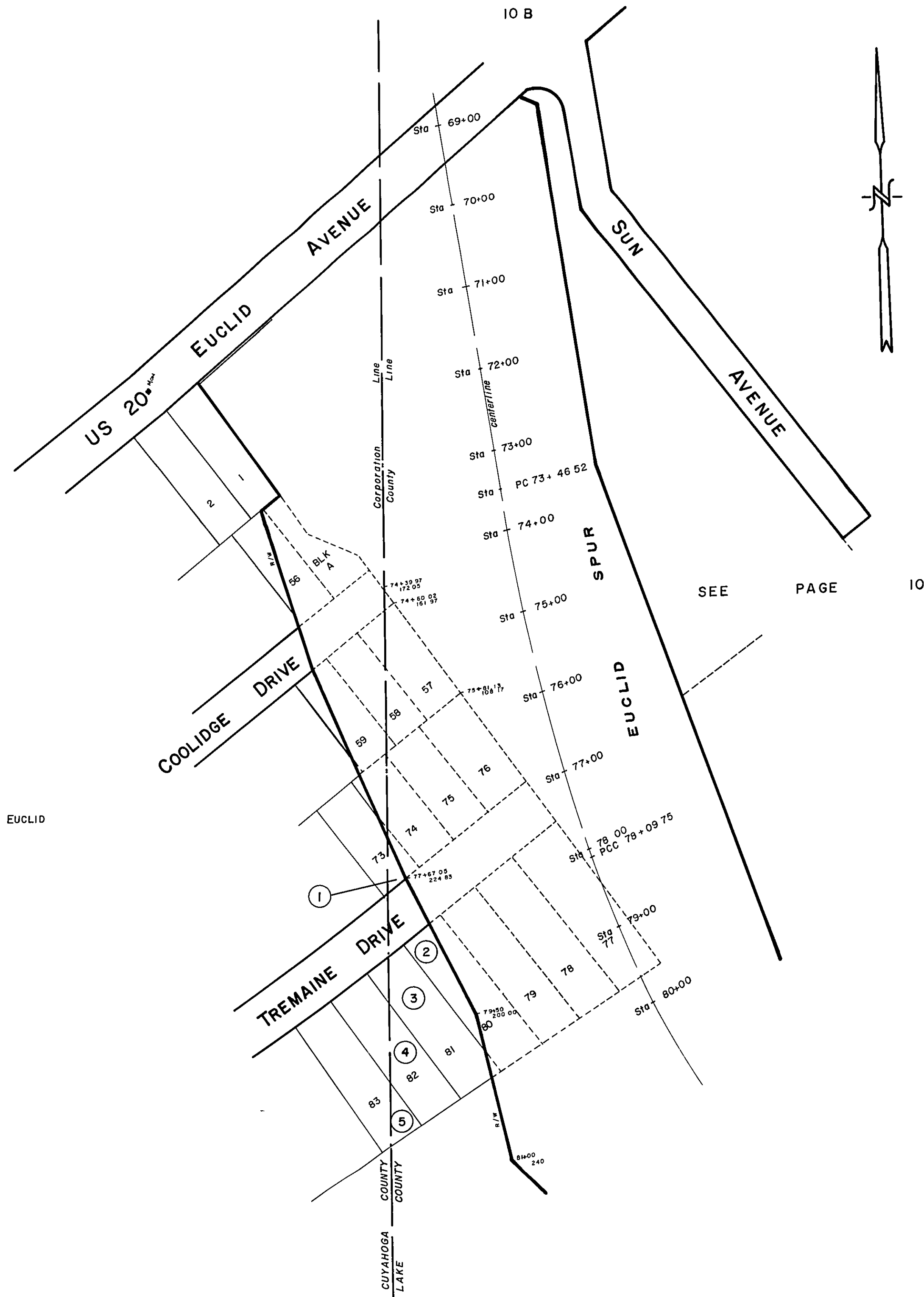


SEE PAGE 10 B



SEE PAGE 10

CITY of EUCLID

P. J. O'DONNELL'S HILLANDALE SUBDIVISION No. 1 PROPOSED

BEING PART OF TRACT 8, LOT 2 IN THE CITY OF
WICKLIFFE, COUNTY OF LAKE, STATE OF OHIO..

Circled Nos	O	W	N	E	R
1	FORKAPA REALTY CORP V 197 379				
2	FRANK S & MARIE L KEENE V 813 369 415 76 V 105 185 11 14 81				
3	WILLIAM C RAND V 955 105A 1A 30 93				
4	WILLIAM C RAND V 955 105A 1A 30 93				
5	DARRYL & MELISSA D LEMON				

SCALE, 1" = 100'

P.J.O.
12/76