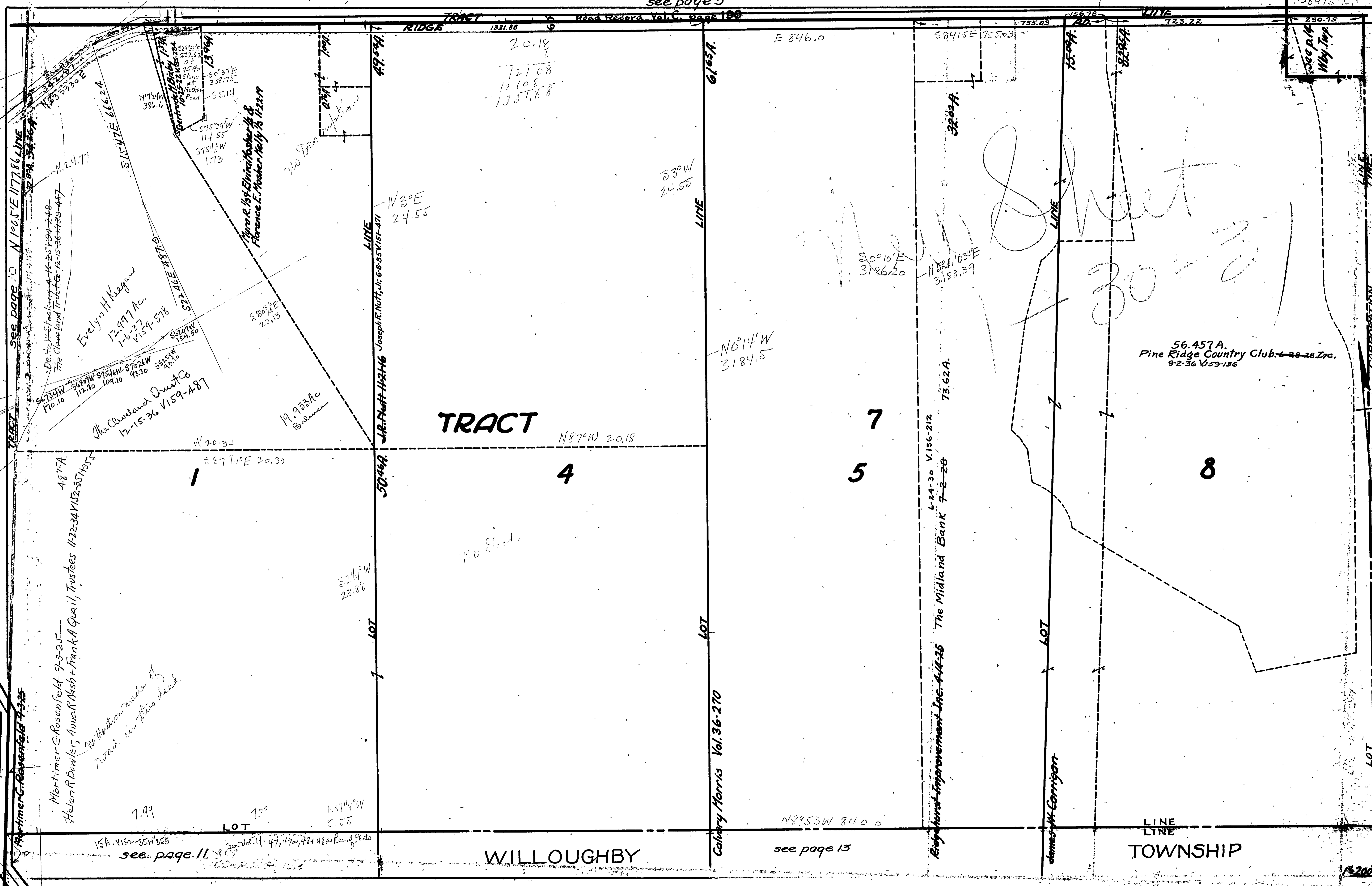


Read Record Vol. C, page 190



TRACT
see page 10
N 10.5° E 177.86
21.94 34.46

See page 10
N 10.5° E 177.86
21.94 34.46

22346
13428
14770

9.95
5770
55670

12.26
1386.
1509A.
N 2.53° W
114.12 E
174.47
155.15
159.17
191.70
195.07
197.00

Do not check
The Cleveland Trust Co.
12-15-36 V159-467

Evelyn H. Keegan
12.997 Ac.
146-37
V159-578

The Cleveland Trust Co.
12-15-36 V159-487

Mortimer C. Rosenfeld
9-3-35
Helen R. Bewler, Anna R. Nash + Frank A. Quail, Trustees
11-22-34 V152-357-355

No portion made of
Road in this deal

7.99
15A. V162-354-355
see page 11

LOT
7.00

See Vol. H-47, 47a, 48 + 48a Rec. of Peds

George H. Gaby
12-28-24
at
95.40
51.14
at
50° 27' E
338.75
at
108' 10" Road
S 51.14

Myra R. 1/88 Elvina Wheeler &
Florence E. Mosher Healy 1/8 11-22-17

No Port

S 30° 10' E
22.13

19.933 Ac
Balance

S 21° 4' W
23.88

N 17° 4' W
5.55

N 3° E
24.55

LINE
Joseph R. Nutt, Jr. 6-8-35 V151-471
J.R. Nutt 11-21-16

TRACT

N 87° W 20.18

4

20.18
121.08
121.08
1337.88

S 3° W
24.55

N 0° 14' W
3184.5

LOT
61.65A

LOT
Calvary Morris Vol. 36-270

N 87° 53' W 840.0

see page 13

5
7

LOT
6-24-30 V156-212
The Midland Bank 7-2-28

32.00A

N 82° 10' 30" E
3183.39

73.62A

LOT
James H. Corrigan

32.00A

LINE

LINE

LINE

LINE

82.97A

LINE

LINE

LINE

LINE

56.457 A.
Pine Ridge Country Club, Inc. 29-28-28
9-2-36 V159-136

TOWNSHIP

LOT

14200

see page 14

CORPORATION

LINE

see page 14
Wby. Imp

290.75

723.22

755.03

58415'E 755.03

E 846.0

1331.88

RIDGE TRACT