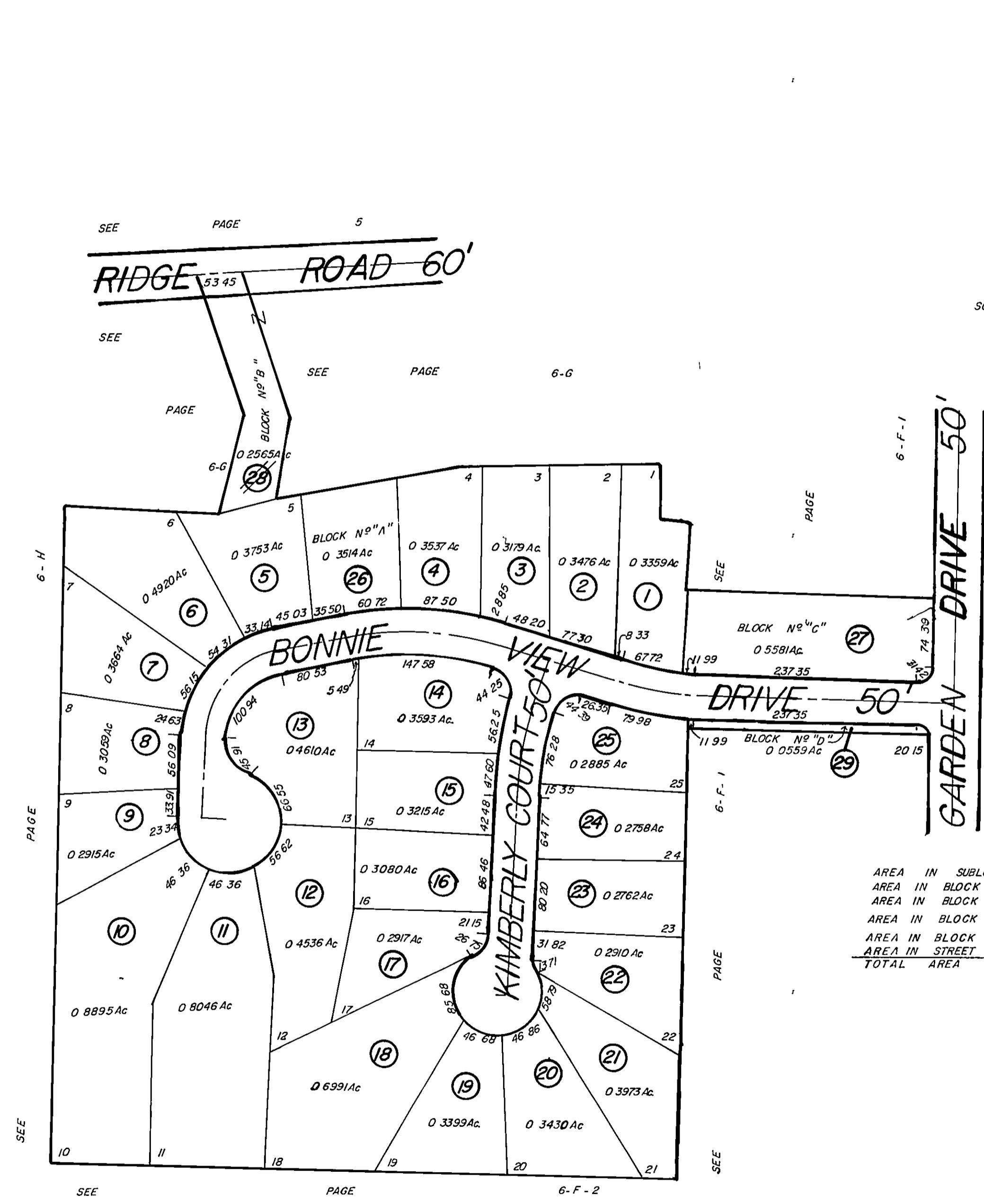


KIMBERLY ESTATES RESUBDIVISION

BEING A PART OF ORIGINAL WILLOUGHBY TOWNSHIP LOT N^o 4 TRACT N^o 7,
CITY OF WICKLIFFE, LAKE COUNTY, OHIO

RECORDED IN VOL. 25 PAGE 29 11-24-95 TRANSFERRED 11-24-95
RECORDED IN VOL. 29 PAGE 24 6-27-97 TRANSFERRED 6-27-97

6-M



PARCEL N ^o	O	W	N	E	R
1	LANMARK HOMES, INC. 8-24-97 97004000	7-29-97 10-5-99			
2	LANMARK HOMES, INC. 8-24-97 97004000	DANIEL E + DENISE L SZANYI			
3	BARR BROS. REMODELING-CONS-INC 8-29-97	FRANK A + CENNIA 8-29-97			MARK + JILL DAMBRASIA
4	LANMARK HOMES, INC. 97004107 8-26-97	KATHLEEN A MANIGLIA TR 20007206			
5	PETER + TRICIA A VOLOVIC 97003317 8-17-97	HAUGHTON BUILDING CO INC			DAVID F + FRANCINE M ZAK
6	KEITH + CYNTHIA MARINO 97007797 8-8-97				
7	MARK P + BARBARA A OESTERLE 8-11-97	LANMARK HOMES, INC. 3-28-97			97003017 8-26-97
8	NICHOLAS R + MARIAN A DOAJAC 96004694 12-9-96	MARK P + BARBARA A			OESTERLE
9	PHILIP V + GAIL I GABRIEL 97004495				
10	LONGAR CONST CO INC. 2-29-02 2003R01110				
11	LANMARK HOMES, INC. 6-27-00 218 01 200	10122 3-13-03			
12	BARR BROS. REMODELING-CONS-INC 8-10-97	FRANK J + MELBA SKILBAR			
13	ROBERT T + GLORIA A PRELOCK 11-18-96 96004477	WENDY F ZELE 20006334 1-19			01 20012155
14	LANMARK HOMES, INC. 8-20-95 5-12-98	MIGUEL J + ANNE M CAPETILO 12-15-00			
15	MORRIS B + BARRITT I HUBBARD 10-00-00 10-00-00	STEVEN A DELCHIN 5-18-02 2002R023960			
16	NEVIA AVZLAHAR 4-10-97 97001183				
17	ELAINE R SLUGA 200109364 3-15-2001				
18	RIVER OAKS HOMES, INC. 20005667 8-22-00	LAURA D ZORETICH TR			
19	JAMES E ZORETICH 20005666 8-22-00	SCOTT C + CHARLINA M HUNK 10-11-01			
20	FERNANDO CAPUTO 11-19-00 40005819	CHARLES J + MISTY THELEN 97002078			7-20-99 1999S0087 12-29-99
21	LANMARK HOMES, INC. 8-10-97 2003R01110	IVYAN + KATHY MEADOR 20026325			2-5-02
22	LONGAR CONST CO INC. 2-29-02 2003R01110				
23	NE MONARCH HOMES INC 2003R013809				
24	LANMARK HOMES, INC. 200040627	TED W + KATHLEEN D RADDLE 9601			
25	LANMARK HOMES, INC. 11-27-98	JOSEPH F JR + KATHLEENA NICHOLAS B 31 99-990041876			
26	WILCO DEVELOPMENT CO. 970027631 8-22-97	DANIEL E WARREN 97007750 8-8-97			THOMAS R + DIANA M NEILMAN 970035356
27	ROBERT J + BONNIE A CIRINO 970050157				
28	RICHARD D + CAROL A D'ANGELO 970050156				
29					

ALL LOTS NOT OTHERWISE MARKED BELONG TO TOWNE INVESTMENTS II, INC V 917-740 10-12-93