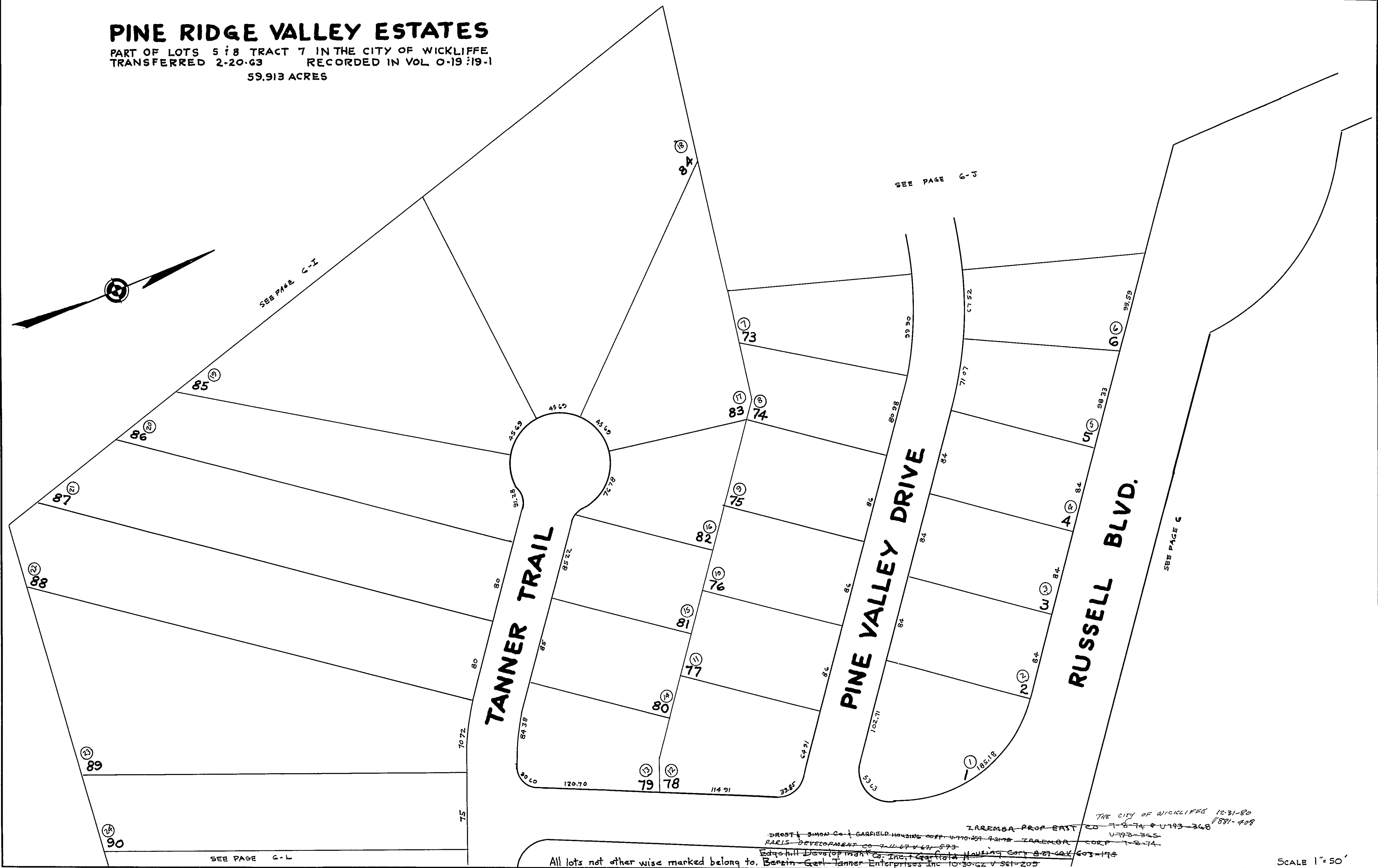
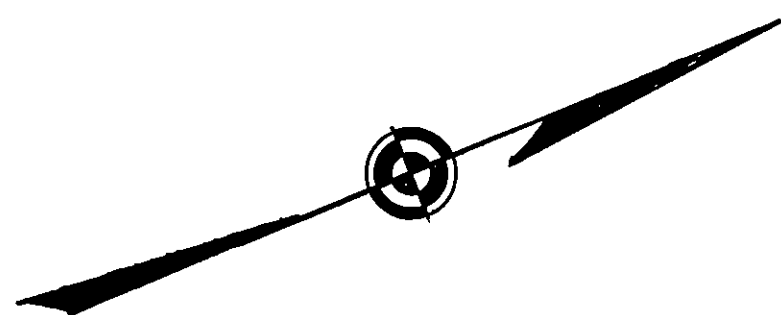


PINE RIDGE VALLEY ESTATES
 PART OF LOTS 5 & 8 TRACT 7 IN THE CITY OF WICKLIFFE
 TRANSFERRED 2-20-63 RECORDED IN VOL 0-19 :19-1
 59.913 ACRES



All lots not other wise marked belong to. ~~Berzin Gen. Tanner Enterprises Inc 10-30-62 V 561-209~~

~~DROST & SIMON Co + GARFIELD HOUSING CORP. U770-571 42778~~
~~PARIS DEVELOPMENT CO 7-11-67 V 471 573~~
~~Edgohill Development Co. Inc. + Garfield Housing Corp 8-27-62 V 603-178~~
~~ZAREMBA PROP EAST CO 7-8-74 V 493-368~~
~~ZAREMBA CORP 7-8-74~~

THE CITY OF WICKLIFFE 12-31-80
 1881-408

SCALE 1" = 50'
 313-63 F.W.O.