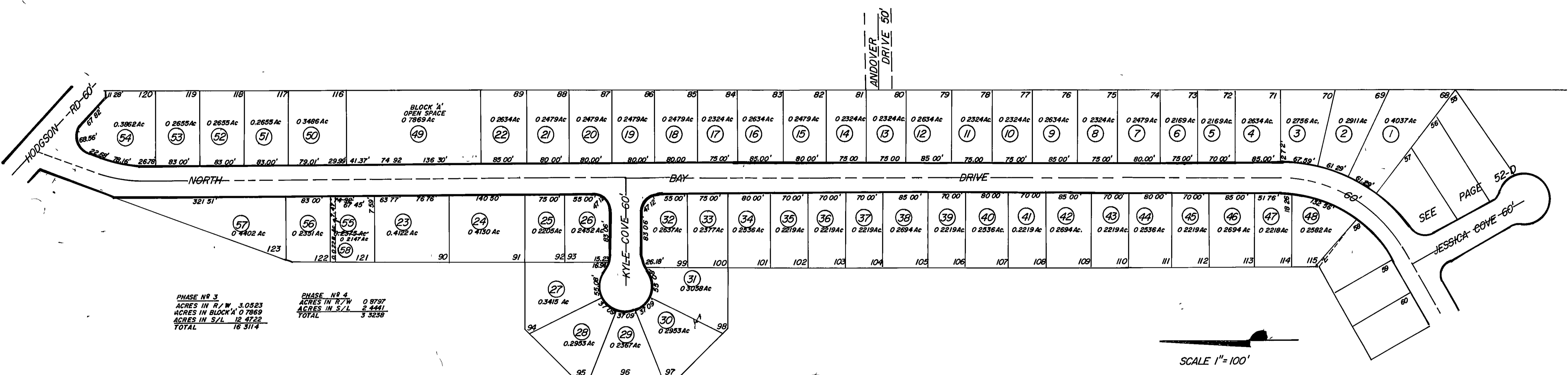


NORTH BAY COLONY PHASE 3,4

BEING PART OF ORIGINAL WILLOUGHBY TOWNSHIP LOT N^o 10 & 13 IN THE DOUGLAS TRACT
CITY OF WILLOUGHBY - LAKE COUNTY

RECORDED IN PLAT VOL 38 PAGE 39 10-25-2000 TRANSFERRED 10-25-2000 PHASE 3
RECORDED IN PLAT VOL 38 PAGE 40 10-25-2000 TRANSFERRED 10-25-2000 PHASE 4



PHASE NO 3
ACRES IN R/W 3.0523
ACRES IN BLOCK 'A' 0.7869
ACRES IN S/L 12.4722
TOTAL 16.3114

PHASE NO 4
ACRES IN R/W 0.8797
ACRES IN S/L 2.4441
TOTAL 3.3238

Parcel No	O	W	N	E	R
1	RTR BUILDERS INC 2002R04604 5-22-02	MARTIN + ALBERT VOLK 3-21-03 2003R015666			
2	RIVER OAKS HOMES INC 12-10-00 2000R03679	TODD + MARION BRANFIELD 8-23-01 2001R02957			
3	RESSLER HOMES, INC 2000R03424 10-30-2000	JOHN + SANDRA S GALIC 20011710 5-2-01			
4	RESSLER HOMES, INC 2000R03483	JOSEPH I + MANUELA S MILJAK 4-20-01 2001W063 + ANKA SAGIC 20024465	6-15-01		
5	RTR INC 12-14-00 2000R04344	2001W3590			
6	RTR BUILDERS INC 8-12-00 2000R03045				
7	JOHN C RODGERS 10-17-02 2002R05616	JOSEPH P HARBAR, TRUSTEE 10-02-02 4650 10-25-02			
8	RTR INC 12-14-00 2000R04345	4-29-02			
9	HENRYH C + BETH A WAWRZYNIAK 2002R021493				
10	20013768 3-10-01	VELOTTA CONSTRUCTION COMPANY			
11		PATRICK + CAROLYN KELLEY 2002R02819 6-4-02			
12	RTR BUILDERS INC 2001R01640 11-6-02	THOMAS F + DIANA M STREET 5-30-03 2003R03107			
13	2002R0473 9-10-02	VELOTTA CONSTRUCTION COMPANY			
14	RIVER OAKS HOMES INC 2002R03500 10-10-02	GEORGE N + JOAN C BENNETT JR 7-3-03			
15	RIVER OAKS HOMES INC 2002R03760	GENE E + KIMBERLY A WHEELER 3-20-03 2003R01505			
16	RESSLER HOMES 2002R03024 7-31-02	BRYANT S + CHRISTINE R FOLEY 1-6-03 2003R000734			
17	RTR INC 12-14-00 2000R04343	NARINDER K + SUNITA R VERMA 3-30-02 2002R01724			
18	RIVER OAKS HOMES INC 12-10-00 2000R03676	WILLIAM D + DARLENE K GLASER 12-11-01 2001R021407			
19	RESSLER HOMES INC 12-10-00 2000R03677	RANDY + TINA L SAUNGE 11-11-00 2001R02660			
20	RIVER OAKS HOMES INC 12-10-00 2000R03678				
21	KORRETT SR + BARBARA A ARNOLD 3-8-02 2002R02363				
22	RESSLER HOMES INC 2002R03485 7-10-02	ZELSKO I + DEBBIE L CAVAR 10-18-02 2002R053095			
23	VELOTTA CONST CO 6-11-02 2002R03420				
24	RESSLER HOMES INC 12-10-00 2000R03679	JOSEPH W + MICHELE KING 5-22-03 2003R02683			
25	RIVER OAKS HOMES INC 2002R03500				
26	RTR BUILDERS INC 4-20-03 2003R01987				
27	RIVER OAKS HOMES INC 2003R03353 3-10-03				
28	2002R021877 4-30-02	2002R021879 2002R021876			
29	2002R021880 4-30-02 TR 5	JAMES + JUSTINE WALTON III 01 2001R01830			
30	RIVER OAKS HOMES INC 12-10-00 2000R03676	DEANNA E JONES 10-30-01 2001R018760			
31	RESSLER HOMES, INC 2001R01671 10-18-01	THOMAS M + KIMBERLY D WETZEL 2002R021072 4-26-02			

ALL LOTS NOT MARKED BELONG TO: ON THE GREENS PROPERTY COMPANY V 991-886 4-7-94

Parcel No	O	W	N	E	R
30	RIVER OAKS HOMES INC 2001R03645 6-20-01	EUGENE A + WINNEFRED B DIVNEY 5-14-02 2001R02454			
31	RIVER OAKS HOMES INC 2001R03646 6-20-01	ERLE W + MARY C DIETER 200210773 3-1-02			
32	RIVER OAKS HOMES INC 2001R03647 6-20-01	MICHAEL J MALL 7-15-03 2003R048203			
33	RIVER OAKS HOMES INC 2001R03648 6-20-01	NILHELM + PATRICIA A KOBEITZSCH 7-18-02 2002R035532			
34	RTR INC 12-14-00 2000R04346	MICHAEL E + GAIL J LUKS 8-11-02 2002R013992			
35	RIVER OAKS HOMES INC 2001R03649 6-20-01	THOMAS J + CYNTHIA L GRASS 12-03-02 2002R031919			
36	2001R0372 9-10-01	VELOTTA CONSTRUCTION COMPANY			
37		SAMUEL J LACORTE 11-02-2002 20021233			
38	ROSEMARY LYLA M KORNACKI 2000R03974 11-20-00	KUCZYNSKI 10-17-01 TR 10-17-01 200146504			
39	RESSLER HOMES, INC 2001R03650 7-6-01				
40	MICHAEL M HANES 10-15-01 12-18-01				
41	RTR BUILDERS INC 2002R03694 12-22-02	RIVER OAKS HOMES INC 2002R060152 11-21-02			LES D + CHERYL A READE 3-20-03 2003R015117
42	ALBIS STAVITIS 51-02 2002R02238				
43					
44					
45					
46					
47	RTR BUILDERS INC 2002R02691 5-22-02				
48					
49	RIVER OAKS HOMES INC 2002R03695 3-23-03	MILAN + MARIJA BELAVIC 6-18-03 2003R036345			
50	RIVER OAKS HOMES INC 9-6-03 2003R03353				
51					
52					
53	VELOTTA CONST CO 2003R036200				
54	ROBERT C BROWN ET AL 7-17-02 2003R043748				
55					
56					
57					
58	VELOTTA CONSTRUCTION COMPANY 7-23-2003 2003R045074				