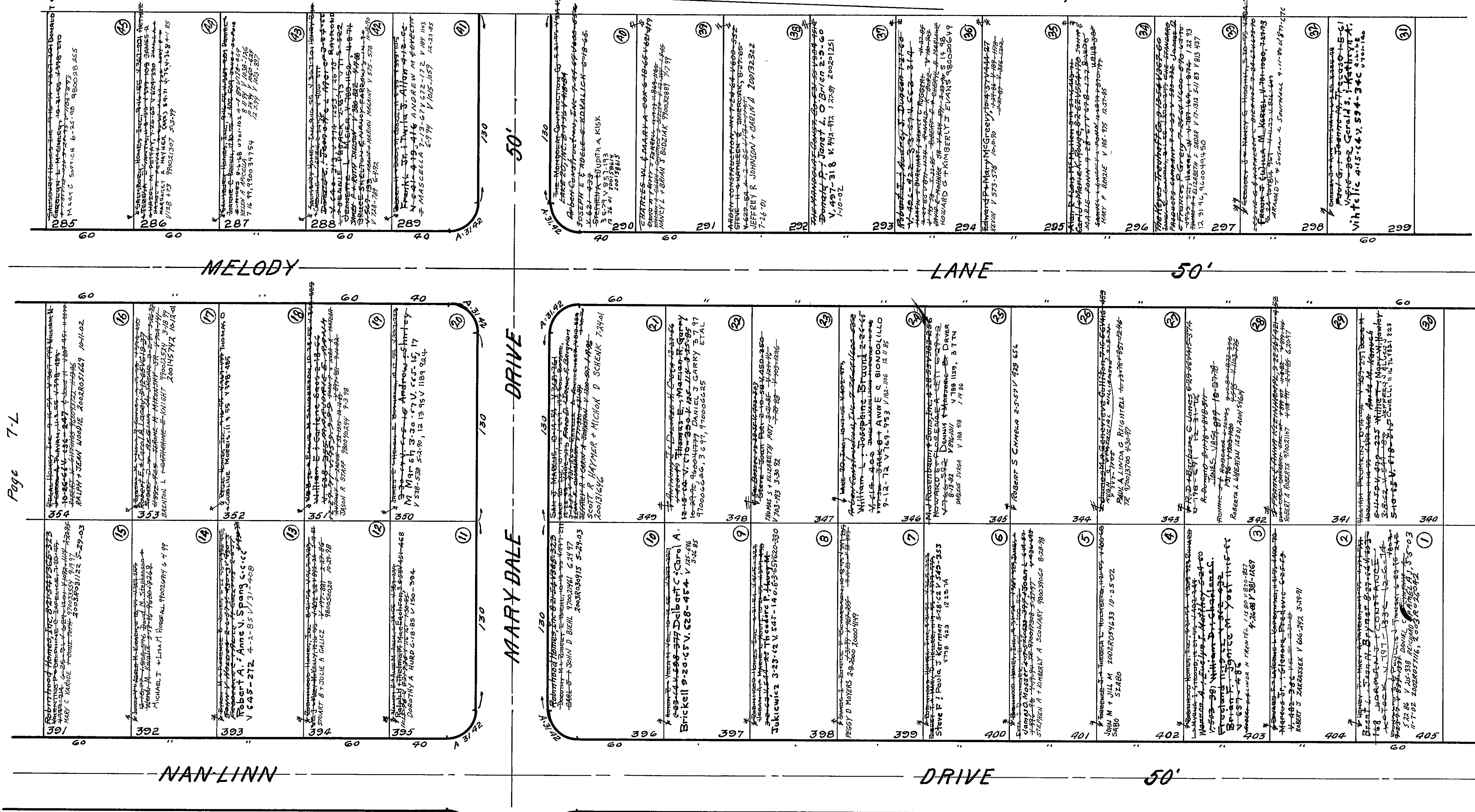


RIDGE ACRES ESTATES No. 2

BEING A SUBDIVISION OF A PART OF LOTS 2 and 3 TRACT 10 WILLOUGHBY CITY
TRANSFERRED 8-6-54
RECORDED Vol. J, Pg. 107. LAKE CO., O.

PAGE 7-D

Page 7-D



Page 7-L

Page 7-U

Page 7-N
 All lots, not otherwise marked, belong to
 Albert B Ratner Tr. 1/2 12-15-61 V. 520-178
 Willobee Plaza Inc. 12-15-61 V. 520-168 1/2 Int
 Lake 20 Inc. 11-53 V. 330-388 11-24-53 V. 350-104
 Scale: 1" = 40' 8-25-54