

LANE 50'

DRIVE 60'

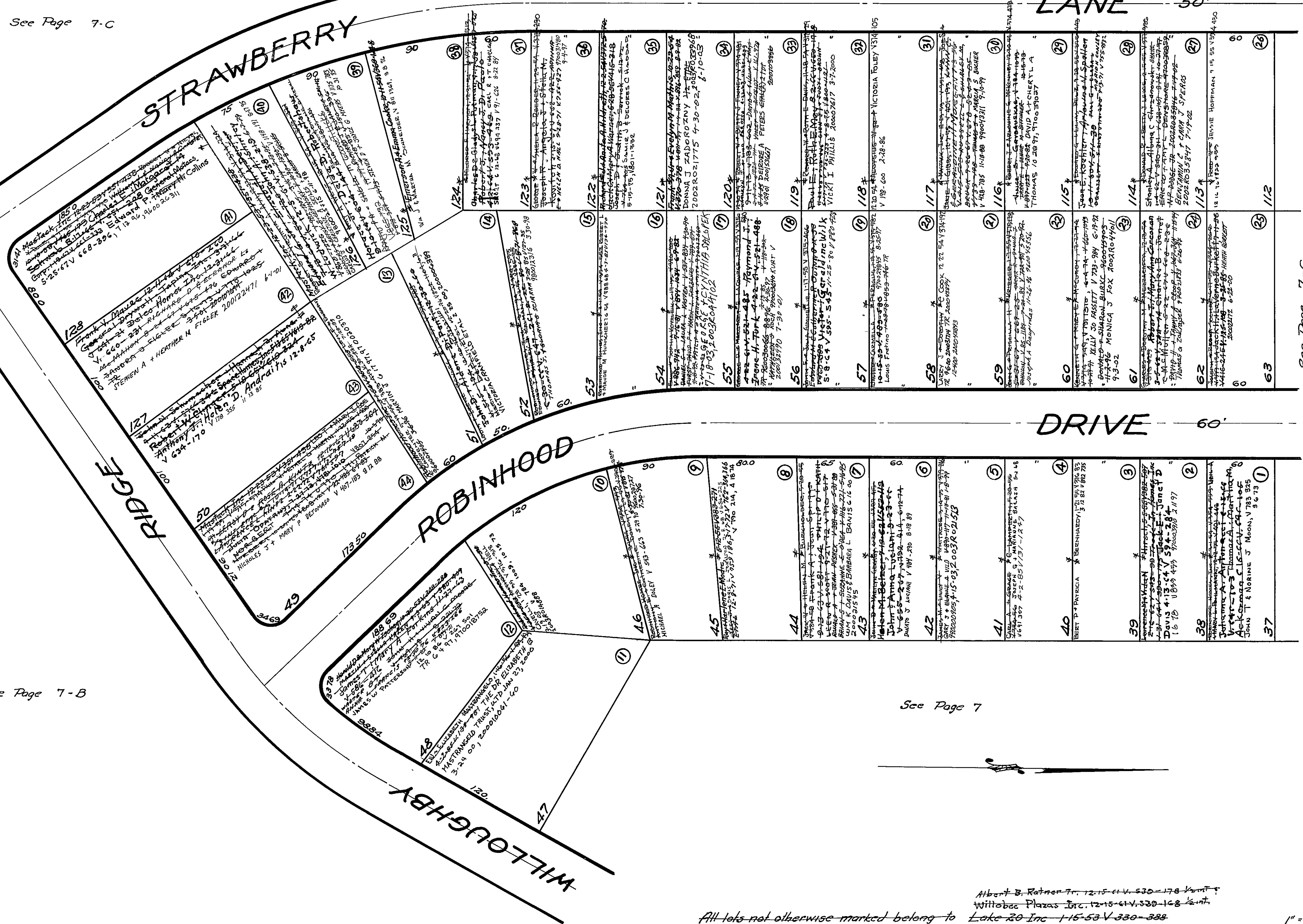
PORT

STRAWBERRY

RIDGE

ROBINHOOD

WILLOUGHBY



All lots not otherwise marked belong to  
 Albert B. Ratner Tr. 12-15-61 V. 530-178 1/2 int.  
 Wittobee Plaza's Inc. 12-15-61 V. 530-168 1/2 int.  
 Lake 20 Inc. 1-15-53 V. 330-388