

See page 7

Leonard E. Solomon, 11-13-53 V 148-197
Wilbert Phoenix, Inc. 12-15-51 V 533-168
L.R. Holding Co. 1-27-57 V 599-175
P. & WHISTON CONSTRUCTION CO. 5-23-74 U 191-632

BIG TURTLE
See Pages
7 T, U, V, W, X, Y, Z
CONDOMINIUMS

The Board of Education, Willoughby Rural School Dist.

SEE PAGE 7-R

2

See page 8

17 RONALD G + LAURA L WHITNEY
V 457-860 1-12-89

18 THE ZELKO CO. 8-1-83, V 31-805

1-15-47

1" = 100'

See page 4

LOT 1
164-54.92

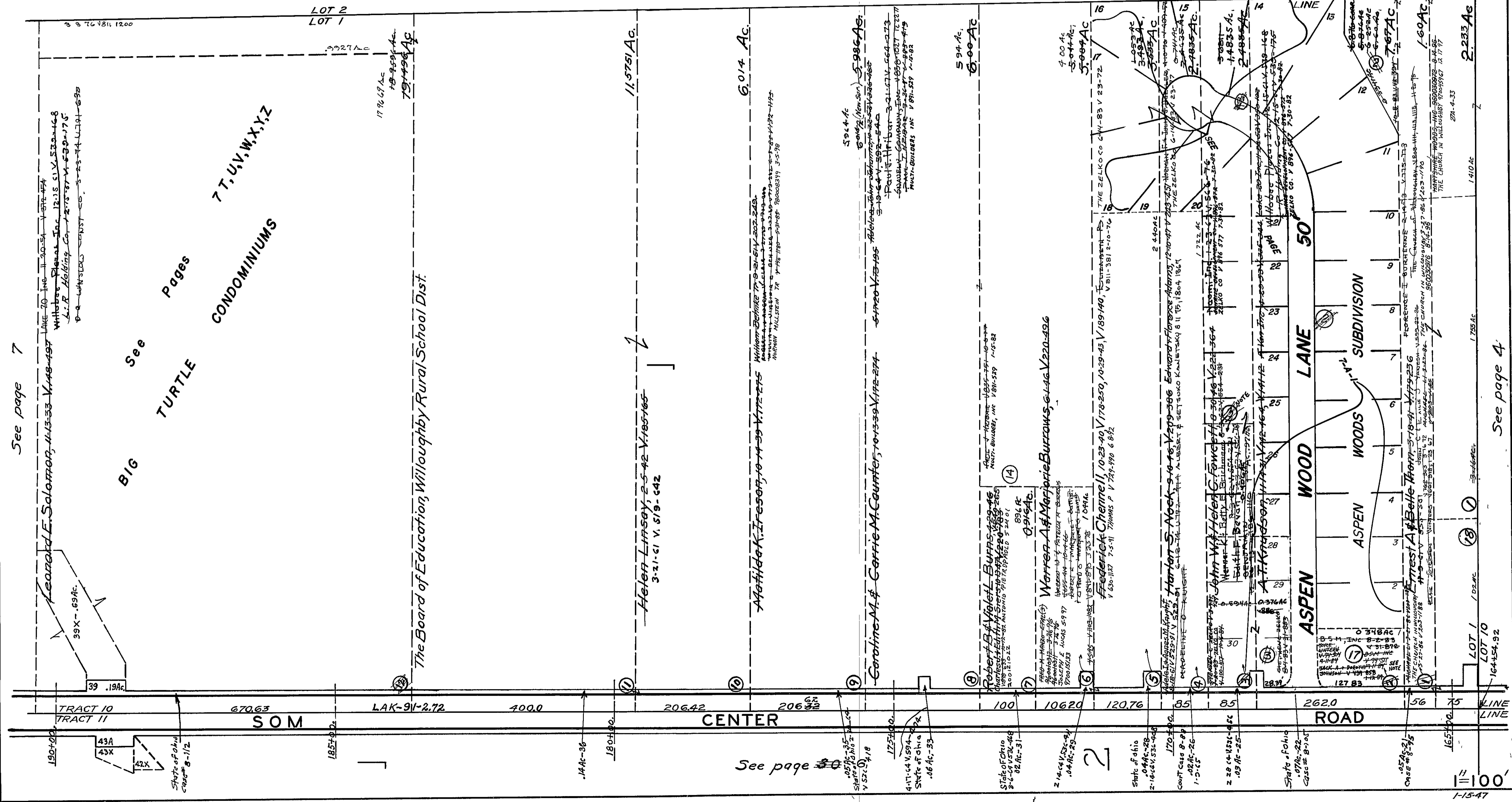
17

1.755 Ac

1.410 Ac

2.233 Ac

LOT 2
LOT 3



1-15-47