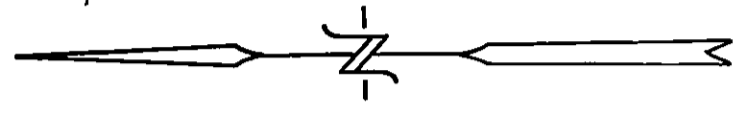
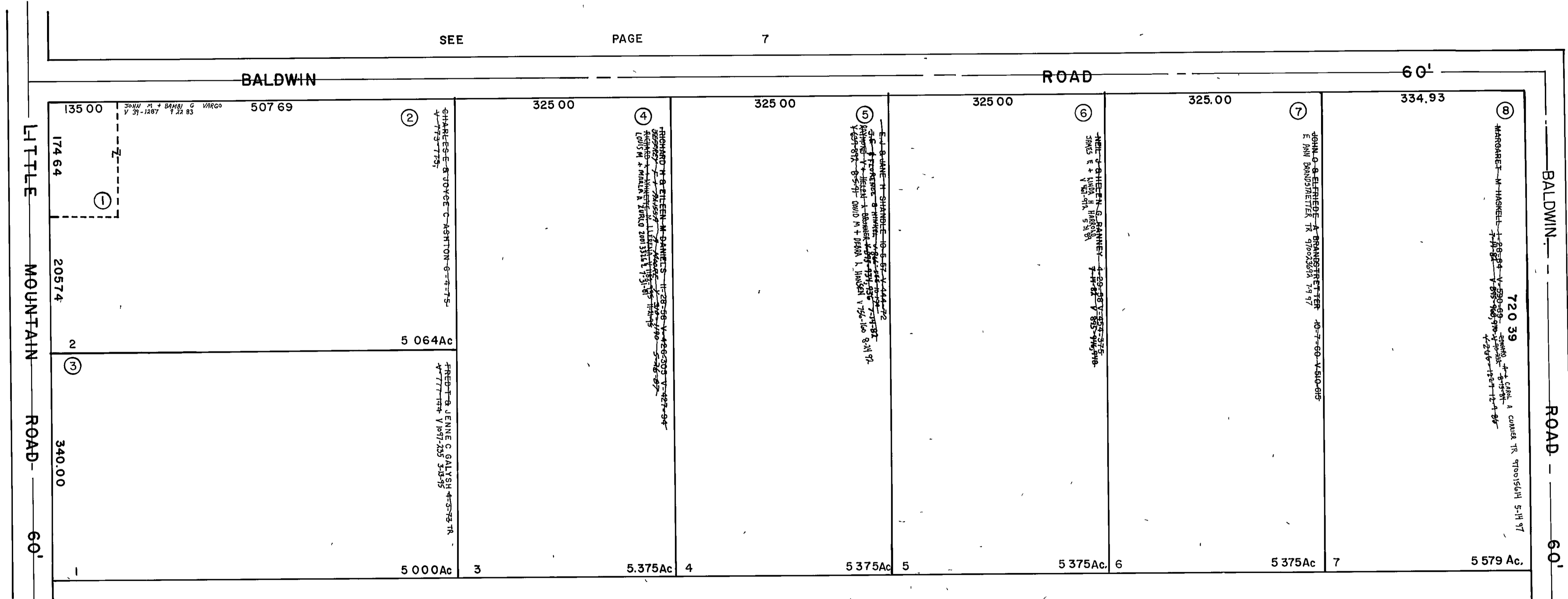


MERKEL ACRES
 BEING A SUBDIVISION OF PROPERTY IN
 LOT 12 TRACK I KIRTLAND HILLS VILLAGE
 LAKE COUNTY, OHIO
 TRANSFERRED II-1-56 RECORDED VOL-L 46



SEE PAGE 7



SEE PAGE 7

SEE PAGE 3