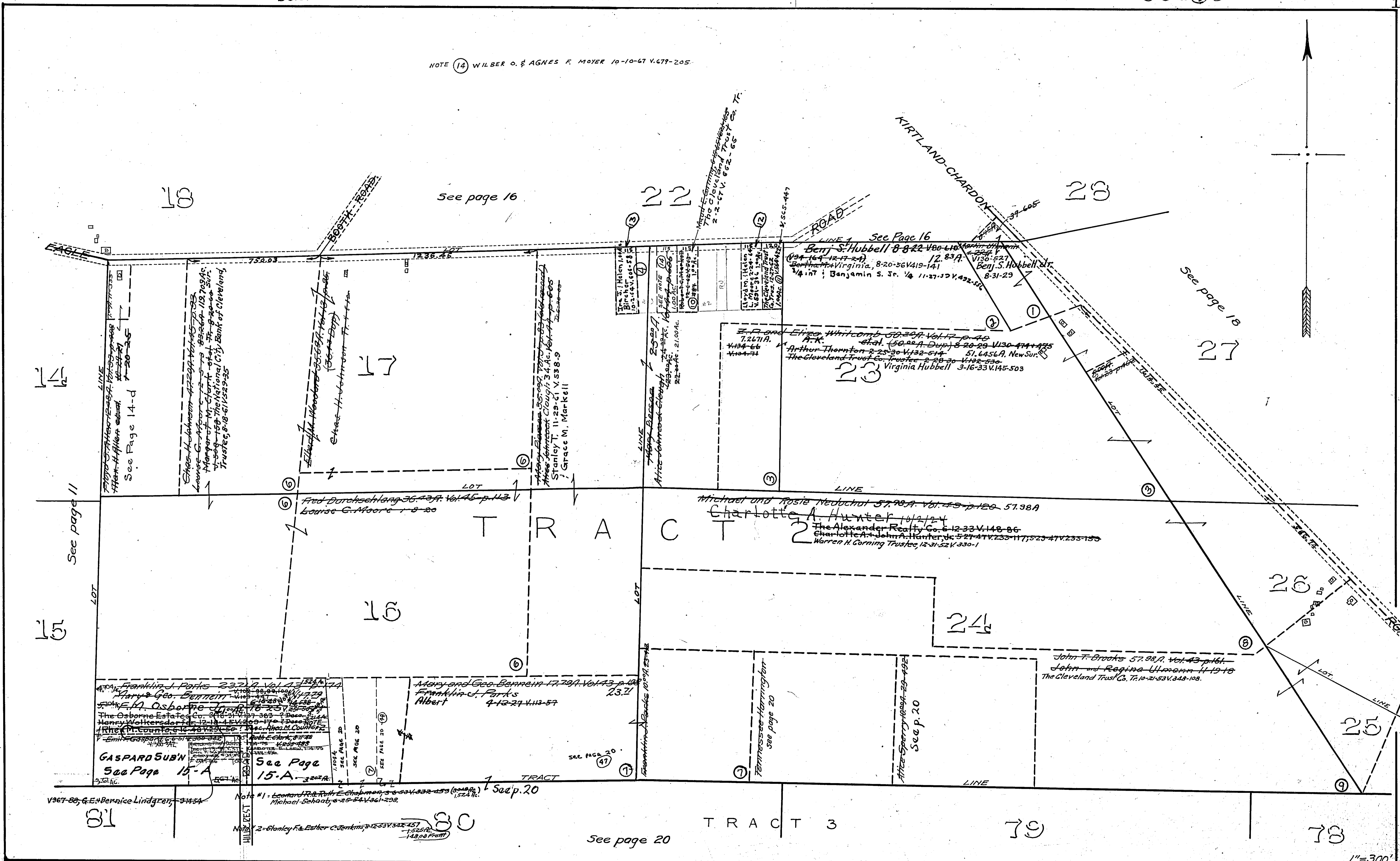


NOTE 14 WILBER O. & AGNES F. MOYER 10-10-67 V. 679-205.



See page 11

See page 16

See page 18

See page 15-A

See page 20

See page 20

See page 15-A

Note #1 - Leonard R. & Ruth E. Chapman, 3-6-53 V. 332-455 (6000 ft. 1524 Ac.)
Michael Schaab, 6-25-54 V. 361-208.

Note #2 - Stanley F. & Esther C. Jenkins, 2-12-33 V. 322-457
1-25-52 V. 1525 Ac.
1-18-53 V. 148-03 Farm

Handwritten notes on the left margin:
8-21-09
11-9
11-9
11-9