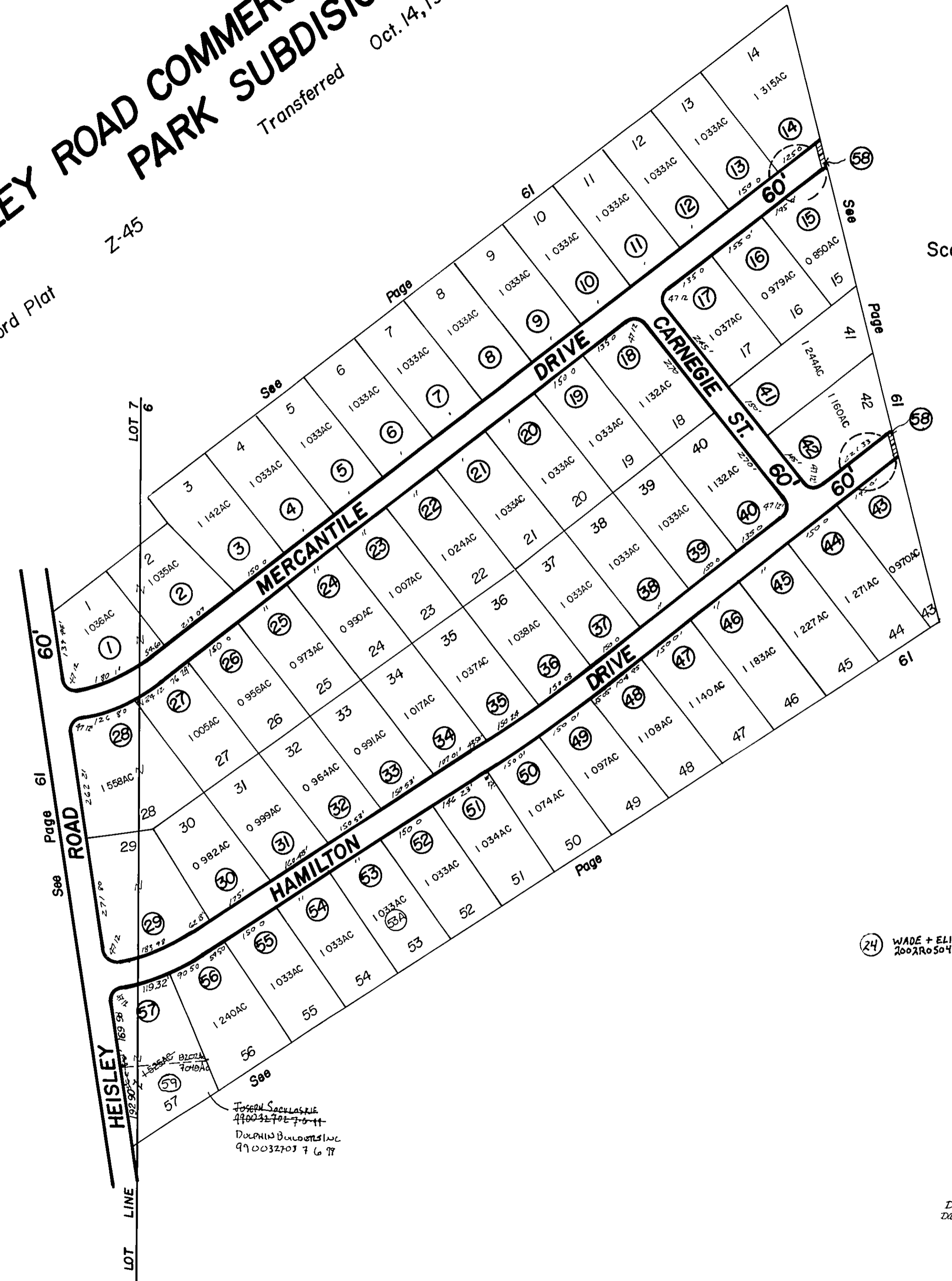


# HEISLEY ROAD COMMERCE PARK SUBDIVISION

Transferred Oct. 14, 1980

Record Plat Z-45



Scale 1" = 200'

29 HIERONYMUS LIMITED LIABILITY Co IA 3102 2002R068502

24 WADE + ELIZABETH GAGICH 2002R05073 10-4-02

Date 10-24-99 DUE BY 7:5

PARCEL NO	O	W	N	E	R
1	MEMORANDUM DEVELOPMENT V 211-191 5-2-86	LAW CO V 254-458 10-22-86	MEMORANDUM DEVELOPMENT V 211-191 5-2-86	CHARLES E + DOUCE C ANTON 10 28 88	
2	MEMORANDUM DEVELOPMENT V 211-191 5-2-86	LAW CO V 254-458 10-22-86	MEMORANDUM DEVELOPMENT V 211-191 5-2-86	RICHARD M + DIANE M OSBORNE 70 4 50 82 12-1-89	SEE BELOW
3	LAW CO V 254-458 10-22-86	LAW CO V 254-458 10-22-86	LAW CO V 254-458 10-22-86	RICHARD M + DIANE M OSBORNE 70 4 50 82 12-1-89	
4	MARK H EAKSON V 174-1300 10 28 85				
6	ROYAL INVESTMENT CO V 174-628 10-25-85	CUYAHOGA MOLDED PLASTICS 1-9 89			
7	LAW CO V 254-458 10-22-86	STATE OF OHIO V 819-7161 2-12-93			
8	LAW CO V 254-458 10-22-86	CITY OF MENTOR V 801 822 6-9-92			
9	SUNSET LAND CO V 362 1086 12-31-87	STATE OF OHIO V 819-7161 2-12-93			
10	LAW CO V 254-458 10-22-86	CITY OF MENTOR V 801 822 6-9-92			
11	LAW CO V 254-458 10-22-86	STATE OF OHIO V 819-7161 2-12-93			
12	SUNSET LAND CO V 362 1086 12-31-87	CITY OF MENTOR V 801 822 6-9-92			
13	SUNSET LAND CO V 362 1086 12-31-87	STATE OF OHIO V 819-7161 2-12-93			
14	LAW CO V 254-458 10-22-86	STATE OF OHIO V 819-7161 2-12-93			
15	SUNSET LAND CO V 362 1086 12-31-87	CITY OF MENTOR V 801 822 6-9-92			
16	LAW CO V 254-458 10-22-86	STATE OF OHIO V 819-7161 2-12-93			
17	LAW CO V 254-458 10-22-86	STATE OF OHIO V 819-7161 2-12-93			
18	ROYAL INVESTMENT CO V 174-628 10-25-85				
19	LAW CO V 254-458 10-22-86	STATE OF OHIO V 819-7161 2-12-93			
20	LAW CO V 254-458 10-22-86	STATE OF OHIO V 819-7161 2-12-93			
21	GLORIA ABBOTT V 160-1206 11-14-86				
22	ROYAL INVESTMENT CO V 174-628 10-25-85	VIVIAN FAMILY LITE PART 4 003			
23	ROYAL INVESTMENT CO V 174-628 10-25-85	VIVIAN FAMILY LITE PART 4 003			
24	ROYAL INVESTMENT CO V 174-628 10-25-85	VIVIAN FAMILY LITE PART 4 003			
25	DAVID T + CHRISTIE RUPLE V 232 707 10-28-86				
26	ROYAL INVESTMENT CO V 174-628 10-25-85	KENNETH R HAMILTON 20010022 1-2-02			
27	ROYAL INVESTMENT CO V 174-628 10-25-85				
28	LAW CO V 254-458 10-22-86	MENTOR PARTNERS, INC 10 24 89			
29	LAW CO V 254-458 10-22-86	MENTOR PARTNERS, INC 10 24 89			
30	LAW CO V 254-458 10-22-86	MENTOR PARTNERS, INC 10 24 89			
31	LAW CO V 254-458 10-22-86	MENTOR PARTNERS, INC 10 24 89			
32	LAW CO V 254-458 10-22-86	MENTOR PARTNERS, INC 10 24 89			
33	LAW CO V 254-458 10-22-86	MENTOR PARTNERS, INC 10 24 89			
34	LAW CO V 254-458 10-22-86	MENTOR PARTNERS, INC 10 24 89			
35	LAW CO V 254-458 10-22-86	MENTOR PARTNERS, INC 10 24 89			
36	LAW CO V 254-458 10-22-86	MENTOR PARTNERS, INC 10 24 89			
37	LAW CO V 254-458 10-22-86	MENTOR PARTNERS, INC 10 24 89			
38	LAW CO V 254-458 10-22-86	MENTOR PARTNERS, INC 10 24 89			
39	LAW CO V 254-458 10-22-86	MENTOR PARTNERS, INC 10 24 89			
40	LAW CO V 254-458 10-22-86	MENTOR PARTNERS, INC 10 24 89			
41	LAW CO V 254-458 10-22-86	MENTOR PARTNERS, INC 10 24 89			
42	LAW CO V 254-458 10-22-86	MENTOR PARTNERS, INC 10 24 89			
43	LAW CO V 254-458 10-22-86	MENTOR PARTNERS, INC 10 24 89			
44	LAW CO V 254-458 10-22-86	MENTOR PARTNERS, INC 10 24 89			
45	LAW CO V 254-458 10-22-86	MENTOR PARTNERS, INC 10 24 89			
46	LAW CO V 254-458 10-22-86	MENTOR PARTNERS, INC 10 24 89			
47	LAW CO V 254-458 10-22-86	MENTOR PARTNERS, INC 10 24 89			
48	LAW CO V 254-458 10-22-86	MENTOR PARTNERS, INC 10 24 89			
49	LAW CO V 254-458 10-22-86	MENTOR PARTNERS, INC 10 24 89			
50	LAW CO V 254-458 10-22-86	MENTOR PARTNERS, INC 10 24 89			
51	LAW CO V 254-458 10-22-86	MENTOR PARTNERS, INC 10 24 89			
52	LAW CO V 254-458 10-22-86	MENTOR PARTNERS, INC 10 24 89			
53	LAW CO V 254-458 10-22-86	MENTOR PARTNERS, INC 10 24 89			
54	ROYAL INVESTMENT CO V 174-628 10-25-85				
55	ROYAL INVESTMENT CO V 174-628 10-25-85				
56	ROYAL INVESTMENT CO V 174-628 10-25-85				
57	ROYAL INVESTMENT CO V 174-628 10-25-85				
58	ROYAL INVESTMENT CO V 174-628 10-25-85				
5	EDWARD L + CATHERINE S HOEN V 361 1869 10-16-86	CUYAHOGA MOLDED PLASTICS 1-9 89			
53A	DAVID + SARA L ROBERT V 590 399 12 27 91				
2	ERICKSON PROPERTIES P L L 9 18 98 990018694				

ALL UNMARKED PARCELS BELONG TOO, 20-21-80 8-27-80 V 872-561 MENTOR LAND DEVELOPMENT V 211-191 5-2-86