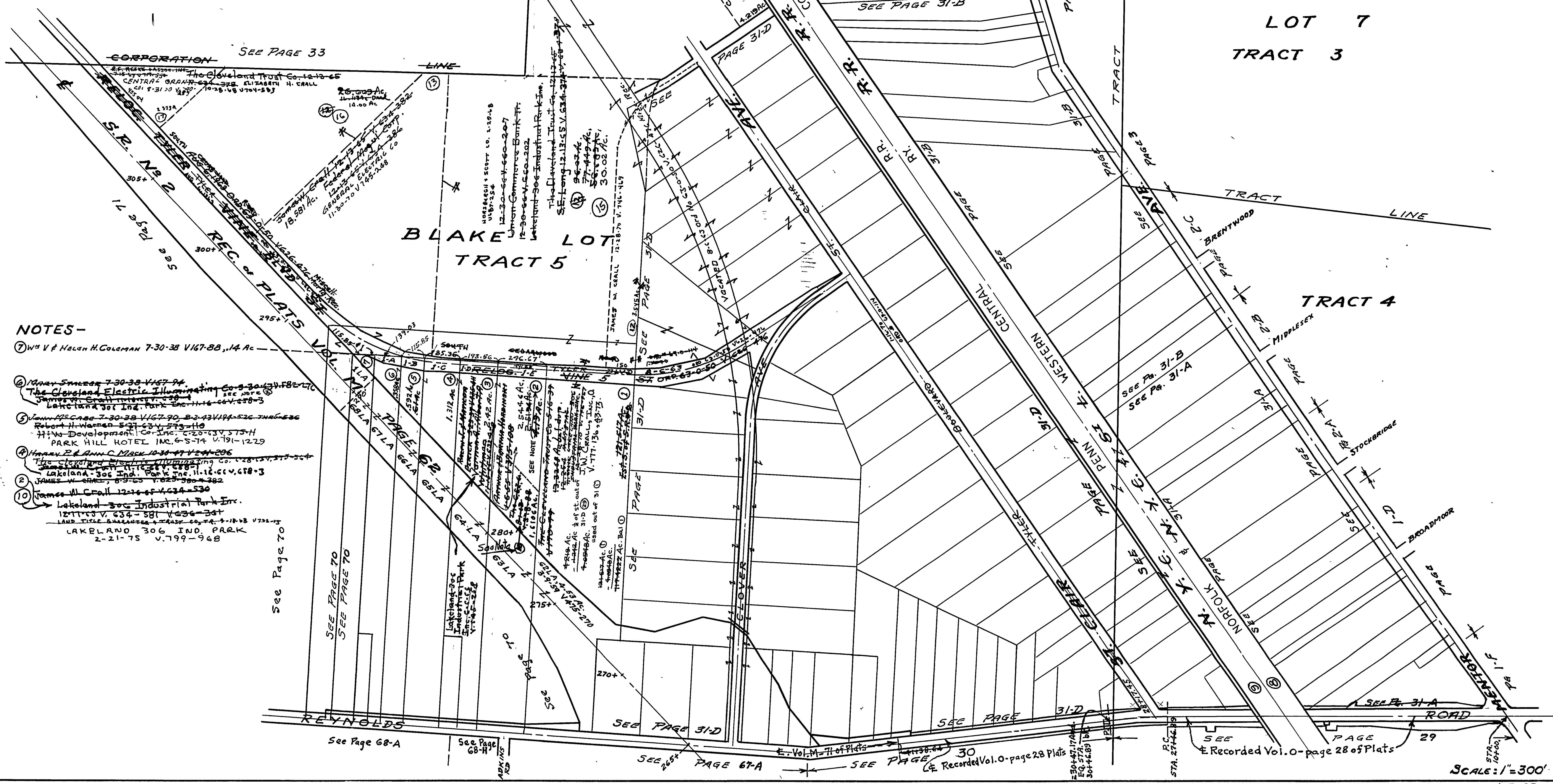


- STATE OF OHIO NOTES:-
- ① L-32-1, .003 Ac, 12-13-58 V469-552
  - ② L-32-1A, .11Ac, 12-13-58 V469-593
  - ③ L-32-1B, .16Ac, 12-13-58 V469-575
  - ④ .29Ac, 3-24-59 PROB CASE # G-573
  - ⑤ L-32-1-D, .30Ac, 2-22-62 COURT CASE # G-578
  - ⑥ .37Ac
  - ⑦ L-32-5, PART OF 6.304 Ac, 3-9-59 V475-260
  - ⑧ L-32-11A, .32Ac, 12-13-58 V469-552
  - ⑨ L-31-68LA, .63Ac, 12-13-58 V469-556
  - ⑩ L-31-67LA, 1.11Ac, 12-13-58 V469-596
  - ⑪ L-31-66LA, .92Ac, 12-13-58 V469-578
  - ⑫ L-31-65LA, 1.50Ac, 3-24-59 PROB CASE # G-573
  - ⑬ L-31-64LA, 1.57Ac, 2-18-62 COURT CASE # G-578
  - ⑭ L-31-63LA, 2.03Ac, 9-4-62 COURT CASE # G-577



- NOTES:-
- ① Wm V & Helen H. COLEMAN 7-30-38 V167-88, .14 Ac
  - ② Mary Smeed 7-30-38 V167-94
  - ③ The Cleveland Electric Illuminating Co. 3-30-43 V182-170
  - ④ James W. Crall 12-13-58 V469-552
  - ⑤ James W. Crall 12-13-58 V469-556
  - ⑥ James W. Crall 12-13-58 V469-596
  - ⑦ James W. Crall 12-13-58 V469-578
  - ⑧ James W. Crall 12-13-58 V469-575
  - ⑨ James W. Crall 12-13-58 V469-552
  - ⑩ Lakeland Soc Industrial Park Inc. 12-13-58 V469-552

MENTOR CITY