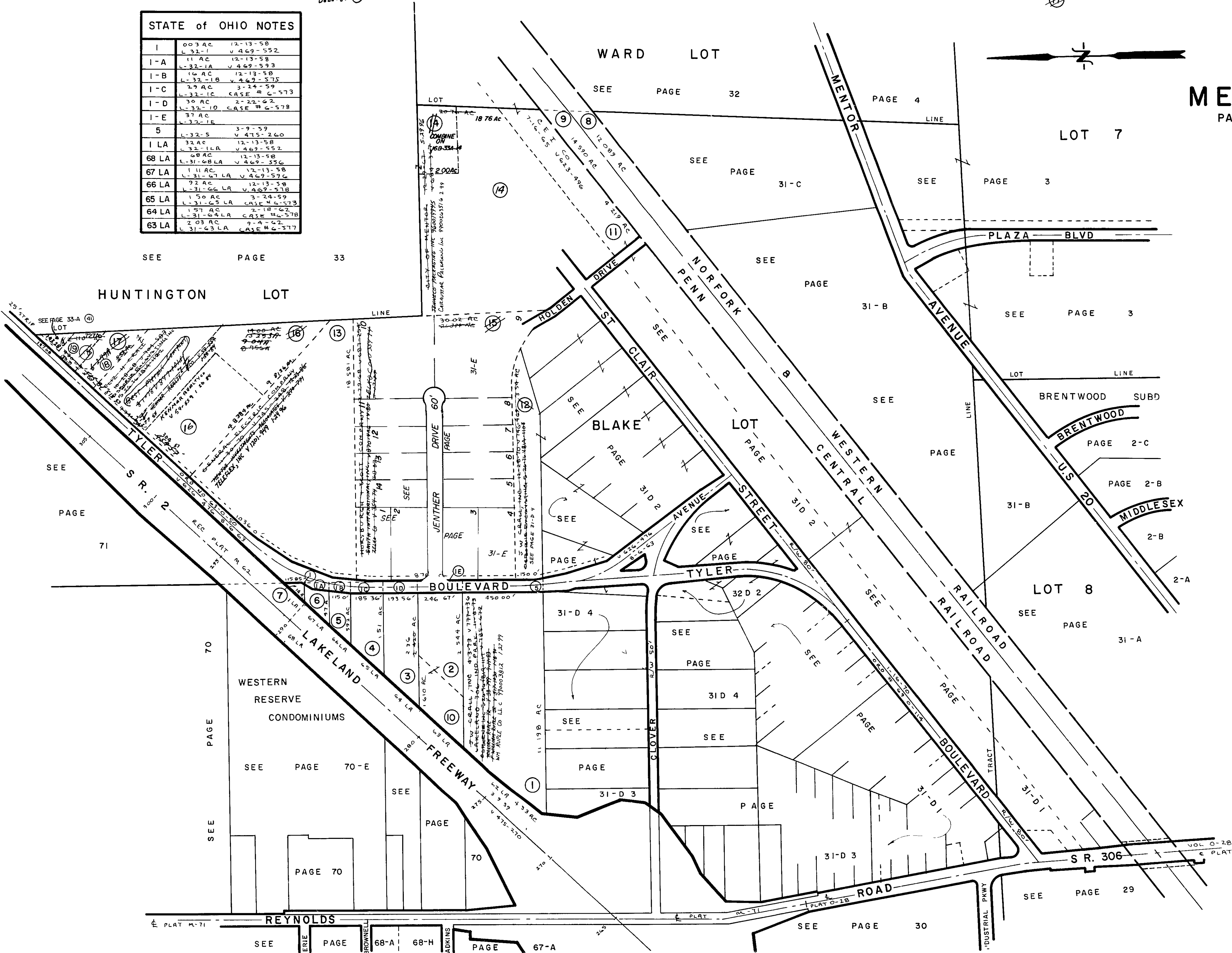


STATE OF OHIO NOTES

I	003 AC	12-13-58
I-A	11 AC	12-13-58
I-B	16 AC	12-13-58
I-C	29 AC	3-24-59
I-D	30 AC	2-22-62
I-E	37 AC	1-32-10
5	32 AC	12-13-58
I LA	32 AC	12-13-58
68 LA	68 AC	12-13-58
67 LA	111 AC	12-13-58
66 LA	72 AC	12-13-58
65 LA	150 AC	3-24-59
64 LA	15 AC	2-18-62
63 LA	203 AC	9-4-62

MENTOR CITY

PART OF BLAKE LOT, TRACT 5



PCL NO	OWNERS
2	LAKELAND 300 IND PARK 2-21-75 V 777-768 OSBORNE INC 6-24-78 1117 FRANK FETTECWHITE 3-11-75 V 825-13 ACME-CLEVELAND CORP V 64-117 8-27-78 V 827-184 HENRY V + BARBARA BLOOM V 117-261 8-15-75
3	LAKELAND 306 IND PARK 6-6-80 V 645-158 OSBORNE INC 6-24-78 FRANK FETTECWHITE 3-11-75 V 825-13 ACME-CLEVELAND CORP V 64-117 8-27-78 V 827-184 HENRY V + BARBARA BLOOM V 117-261 8-15-75
4	LAKELAND 306 IND PARK 6-6-80 V 645-158 OSBORNE INC 6-24-78 FRANK FETTECWHITE 3-11-75 V 825-13 ACME-CLEVELAND CORP V 64-117 8-27-78 V 827-184 HENRY V + BARBARA BLOOM V 117-261 8-15-75
5	PARK HILL HOTEL INC 6-27-74 V 79-122 ALLIANCE REALTY CO FRANK FETTECWHITE 3-11-75 V 825-13 ACME-CLEVELAND CORP V 64-117 8-27-78 V 827-184 HENRY V + BARBARA BLOOM V 117-261 8-15-75
6	LAKELAND 306 IND PARK 6-6-80 V 645-158 OSBORNE INC 6-24-78 FRANK FETTECWHITE 3-11-75 V 825-13 ACME-CLEVELAND CORP V 64-117 8-27-78 V 827-184 HENRY V + BARBARA BLOOM V 117-261 8-15-75
7	HELEN H COLEMAN 7-30-78 V 167-88 FRANK FETTECWHITE 3-11-75 V 825-13 ACME-CLEVELAND CORP V 64-117 8-27-78 V 827-184 HENRY V + BARBARA BLOOM V 117-261 8-15-75
10	LAKELAND 306 IND PARK 2-21-75 V 777-768 OSBORNE INC 6-24-78 1117 FRANK FETTECWHITE 3-11-75 V 825-13 ACME-CLEVELAND CORP V 64-117 8-27-78 V 827-184 HENRY V + BARBARA BLOOM V 117-261 8-15-75
17	CENTRAL GRANT CO 8-31-30 V 740-83 OSBORNE INC 6-24-78 FRANK FETTECWHITE 3-11-75 V 825-13 ACME-CLEVELAND CORP V 64-117 8-27-78 V 827-184 HENRY V + BARBARA BLOOM V 117-261 8-15-75
18	WATSON COMPANY DIMMICKS CORP 4-10-70 V 113-04 787 PROPERTIES CO L.P. V 1071-814 11-20-74 V 1162-293 2-28-75
19	RIEY HOMES INC V 374-310 3-18-88 M.E. OSBORNE PROPERTIES V 374-861 EDMUND CORP V 374-114 1-24-71 TYLER COMPANIES CENTER ASSOCIATES V 681-704

