

MOUNTAIN MEADOW SUBDIVISION. A DIVISION OF 13.019 A. IN LOT 5, TRACT 2, MENTOR TOWNSHIP, LAKE COUNTY, OHIO. TRANSFERRED, 11-15-1958. - RECORDED, VOL M, PAGE 64.

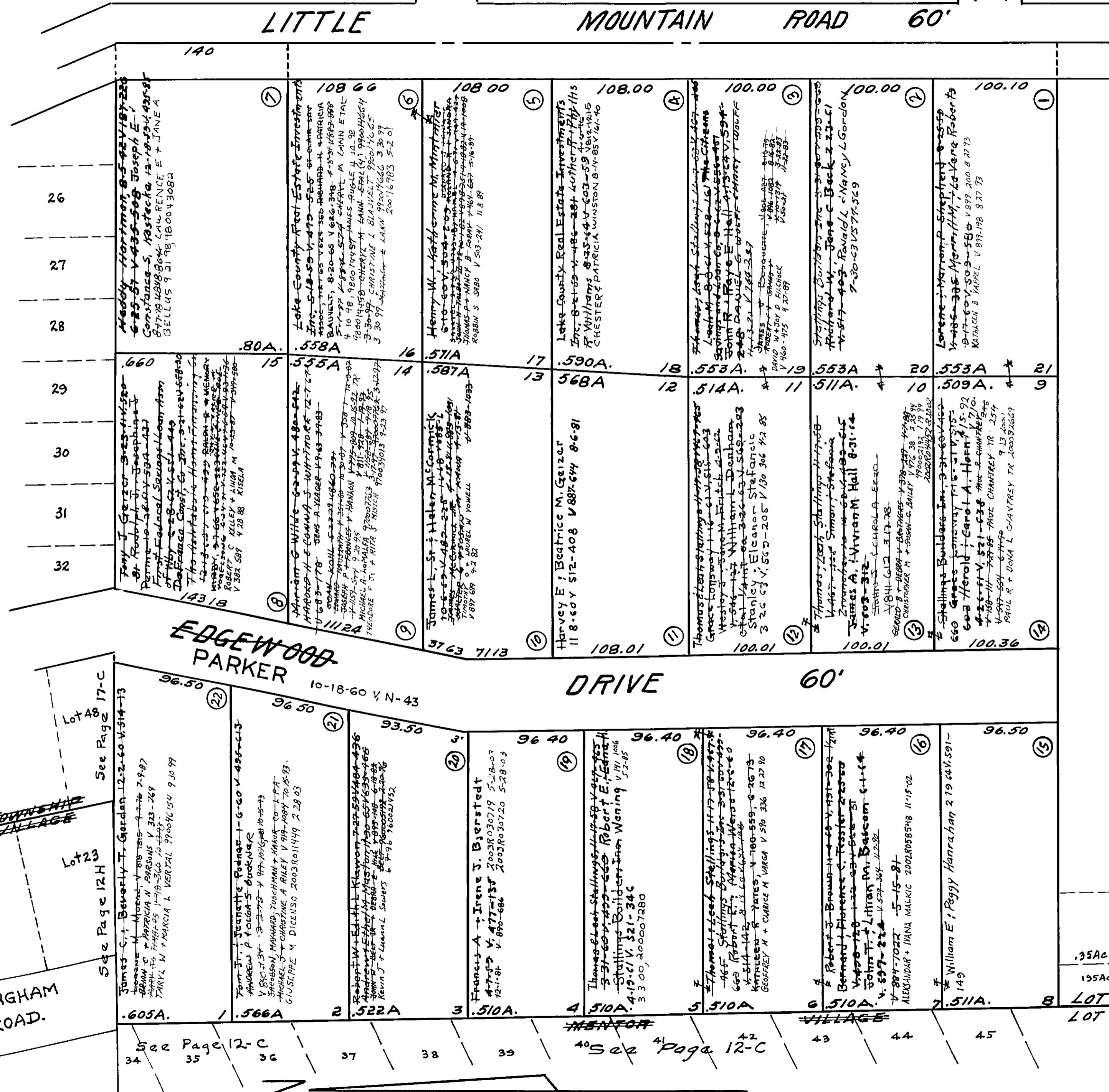
See Page 17-D

See Page 17-C

See Page 15

MENTOR TOWNSHIP MENTOR VILLAGE

ROCKINGHAM ROAD.



All lots not otherwise marked belong to Milton A Boomhower, 10-23-1958, V 466-421

Scale 1"=60'