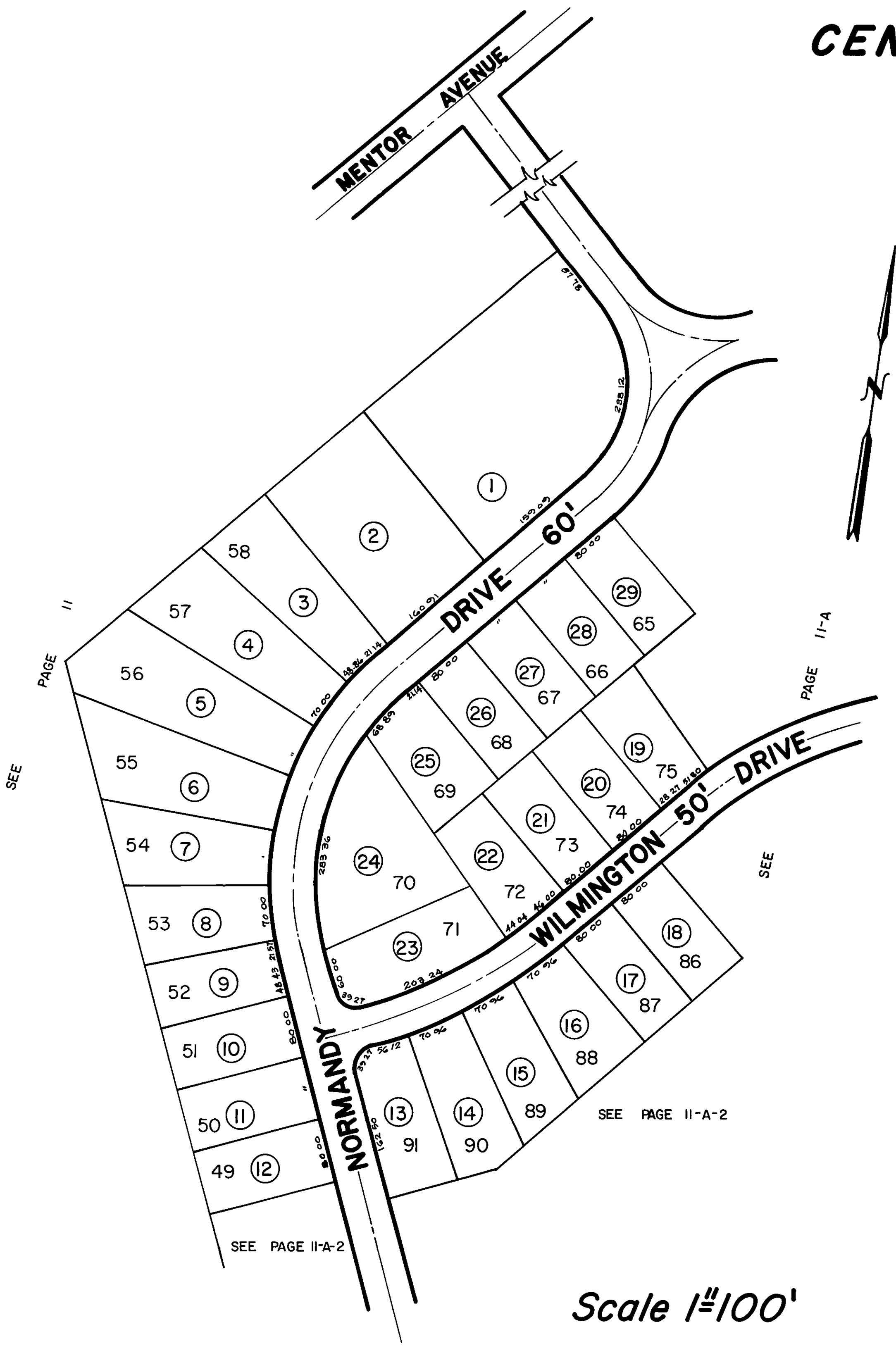


CENTER PARK ESTATES



Scale 1"=100'

Parcel No	O	W	N	E	R
1	FRANK SCARLE 2-23-68, 1487-74	BOOTH LANDSCAPING & PAVING INC 1003-1004, 10-19	FREDERICK C. STURGEON 12-11-77	CHERRY FARMS LTD CHERRY FARMS APARTMENTS, LTD 1000-1001, 10-19	
2	FRANK SCARLE 2-23-68, 1487-74	BOOTH LANDSCAPING & PAVING INC 1003-1004, 10-19		CHERRY FARMS APARTMENTS, LTD 1000-1001, 10-19	
3	FRANK SCARLE 2-23-68, 1487-74	BOOTH LANDSCAPING & PAVING INC 1003-1004, 10-19		CHERRY FARMS APARTMENTS, LTD 1000-1001, 10-19	
4	MARIE L. LEBLANC 1-18-66, 1487-74	LORENZO & AGNES B. DARTOLAMI 1-18-66, 1487-74			
5	FRANK SCARLE 2-23-68, 1487-74	NORMAN P. & CARMELA M. POPAR 1-18-66, 1487-74	NANCY A. FITZMAURICE 11-19-82		
6	FRANK SCARLE 2-23-68, 1487-74	MARLENE S. & DINA S. SIMMONS 1-18-66, 1487-74	EMILY S. & KAREN S. DUNCAN 1-18-66, 1487-74	DAVID J. TEMPLE 5-1-01, 200116878	
7	FRANK SCARLE 2-23-68, 1487-74	FRANKO TERRIACO 11-14-02			
8	FRANK SCARLE 2-23-68, 1487-74	JUDITH A. ARENDT 9-20-02			
9	FRANK SCARLE 2-23-68, 1487-74	SCOTT C. ENGLE TR 9-20-02			
10	FRANK SCARLE 2-23-68, 1487-74	KARL R. LENKOWSKI 11-18-79			
11	FRANK SCARLE 2-23-68, 1487-74	KARL R. LENKOWSKI 11-18-79			
12	FRANK SCARLE 2-23-68, 1487-74	JOAN E. FISCHER 9-20-02			
13	FRANK SCARLE 2-23-68, 1487-74	JEAN M. PESEC 9-20-02			
14	FRANK SCARLE 2-23-68, 1487-74	LARRY E. & MAQUAN L. SHOUF 11-18-79	MICHAEL G. HENRI J. NELSON 11-18-79	MARLENE R. BAKER 3-26-97	
15	FRANK SCARLE 2-23-68, 1487-74	ROBERT F. & PATRICIA A. GASH 11-18-79			
16	FRANK SCARLE 2-23-68, 1487-74	THOMAS A. & JENNIFER R. SULLIVAN 11-18-79			
17	FRANK SCARLE 2-23-68, 1487-74	DONALD R. & KIM M. JEROME 11-18-79			
18	FRANK SCARLE 2-23-68, 1487-74	CAROL B. MAHAKEY 4-7-77, 1982-453			
19	FRANK SCARLE 2-23-68, 1487-74	LOUIS L. & LOUISE F. BARNSTON 11-18-79	THOMAS D. THOMAS 11-18-79	HENRY D. RAND JR TR 11-18-79	
20	FRANK SCARLE 2-23-68, 1487-74	KENNETH R. CURTIS JR 12-01-2005, 2007			
21	FRANK SCARLE 2-23-68, 1487-74	LAUREN J. 11-18-79			
22	FRANK SCARLE 2-23-68, 1487-74	SEGREY F. BABUSACK & JOHANN M. NADERER 11-18-79			
23	FRANK SCARLE 2-23-68, 1487-74	MARY A. G. MARTIN 11-18-79			
24	FRANK SCARLE 2-23-68, 1487-74	MARGARET M. DANIS 11-18-79			
25	FRANK SCARLE 2-23-68, 1487-74				
26	FRANK SCARLE 2-23-68, 1487-74				
27	FRANK SCARLE 2-23-68, 1487-74	DIANNE E. & DALE GARRETT 11-18-79			
28	FRANK SCARLE 2-23-68, 1487-74				
29	FRANK SCARLE 2-23-68, 1487-74				

5-13-74