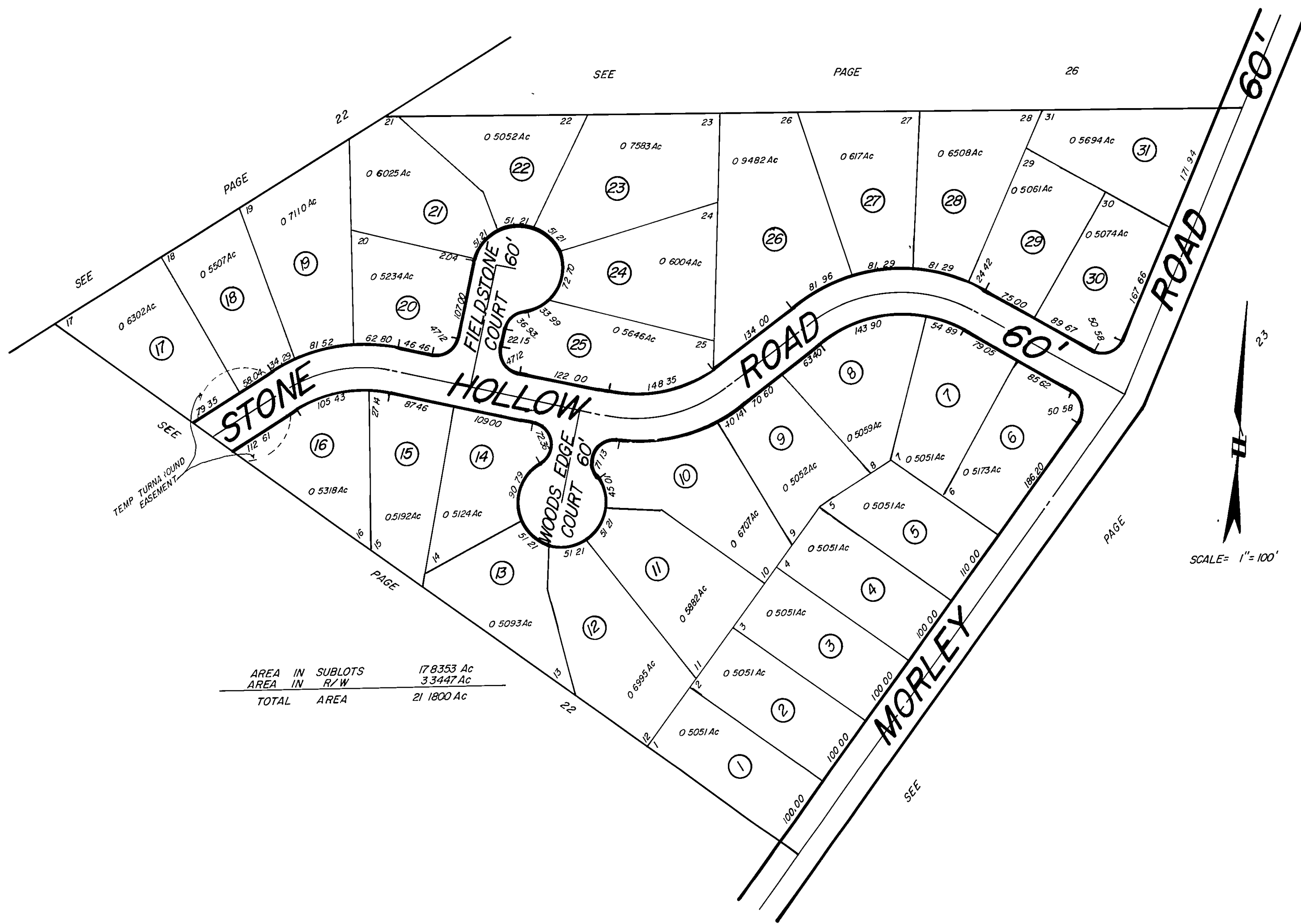


**STONE HOLLOW**  
 BEING A PART OF ORIGINAL CONCORD TOWNSHIP LOTS NO 8 & 9 TRACT NO 4  
 RECORDED IN VOL. 15 PAGE 30 4-9-91 TRANSFERRED 4-9-91



AREA IN	SUBLOTS	17.8353 Ac
AREA IN	R/W	3.3447 Ac
TOTAL	AREA	21.1800 Ac

PARCEL NO	O	W	N	E	R
1	MARK WHITAKER 20010412	JOHN & PAWN CORKRAN 2006-03-20	2003R033165		
2	RONALD R. WHITAKER 200103360	2003R01198C			
3	GREGORY A + TINA L BARNAU 2003R01198C	2003R01198C			
4	THOMAS J + PAMELA E DELONG 2003R01198C				
5	JOHNSON + FENDE BUILDING SYSTEMS, INC 2003R01198C	J. E. F. BUILDING SYSTEMS, INC 200004770	THADDEUS C + LEE E CUDAK 200004770		
6	WASHINGTON BUILDERS, INC 2003R01198C	3.19.93			
7	WILLIAM E + ALICIA A DE ANTIS 2003R01198C	ROBERT A + ANNA M SOLTIS 2003R01198C			
8	WASHINGTON BUILDERS, INC 2003R01198C	M.A.L., INC. 2003R01198C	FRANK + JAYLENE M GRZANDZIEL 2003R01198C	ALAN C + LAURA A TOMCO 2003R01198C	
9	WASHINGTON BUILDERS, INC 2003R01198C	8.26.92			
10	WASHINGTON BUILDERS, INC 2003R01198C				
11	JOHNSON + FENDE BUILDING SYSTEMS, INC 2003R01198C	4.5.93			
12	WASHINGTON BUILDERS, INC 2003R01198C				
13	ANDREW J + BONNIE L FENDE 2003R01198C	002R04043D			
14	JOHNSON + FENDE BUILDING SYSTEMS, INC 2003R01198C	2003R01198C			
15	JOHNSON + FENDE BUILDING SYSTEMS, INC 2003R01198C	2003R01198C			
16	JOHNSON + FENDE BUILDING SYSTEMS, INC 2003R01198C				
17	VONDA L COSCIA 200104053	2003R01198C			
18	RONALD R. WHITAKER 200103360				
19	JOHNSON + FENDE BUILDING SYSTEMS, INC 2003R01198C				
20	JOHNSON + FENDE BUILDING SYSTEMS, INC 2003R01198C				
21	EMORY E + PEGGY A HUNN 2003R01198C	2003R01198C			
22					
23	SHARCK CONSTRUCTION CORP 2003R01198C	2003R01198C			
24	SHARCK CONSTRUCTION CORP 2003R01198C				
25	SCOTT G + DENISE D RUTENBERG 2003R01198C	2003R01198C			
26	SCOTT G + DENISE D RUTENBERG 2003R01198C				
27	WASHINGTON BUILDERS, INC 2003R01198C				
28	WASHINGTON BUILDERS, INC 2003R01198C				
29	JOHNSON + FENDE BUILDING SYSTEMS, INC 2003R01198C				
30	JOHNSON + FENDE BUILDING SYSTEMS, INC 2003R01198C				
31	GORDON T MACDONALD + BARBARA TIERAN 2003R01198C				