

RECORD OF SURVEYS,

Plat of Survey, No. 9, Madison Town, Range

Survey made Oct. 20 + 24th 1892, at the request of William Pope by written notice For the purpose of Establishing the south line of Lot-10. in Tract 4 between lands of William Pope + Samuel Quirk by H. N. Munson County Surveyor.

DESCRIPTION.

Survey and establishment of the south line of Lots 9 + 10 in Tract No 4 Madison township and especially the line between lands of Samuel Quirk and William Pope. it being the south line of said Lot. No. 10. Beginning at a stone in the center of Mc Mackin road at the south west corner of said Lot no. 10. Thence along the south line of said Lots 9 + 10 in said Tract no. 4 S. 87° E. to the south east corner of Lot no. 9 also on to the South west corner of land owned by S. Quirk and then prolonged the line to the South east corner of said Lot No. 10 in the center of Kaines road. it being the South east corner of S. Quirk's land + the North east corner of William Popes land. where we set a stone cross and drove an Iron shaft in the center of it and at the North west corner of William Popes land being 7 chains + 50 links from the center of said road set a stone and at the south west corner of Lot no. 10 set a Sec. of Stone Pump. Surveyed and established upon the evidence of John S. Fowler, T. J. Nolan A. N. Matteson. F. H. Fowler. Charles Mc Mackin + N. B. Gunn.

Chain carriers - Wallace Burnett + William Corlett. (sworn) Copy of Notice To Samuel Quirk, Madison Ohio. - You are hereby notified that on the 20th day of October 1892 the line of land between you and the under signed in Madison Tp. Lake Co. O. will be surveyed and the line of the same be established by the surveyor W. H. Pope Sept. 24 1892

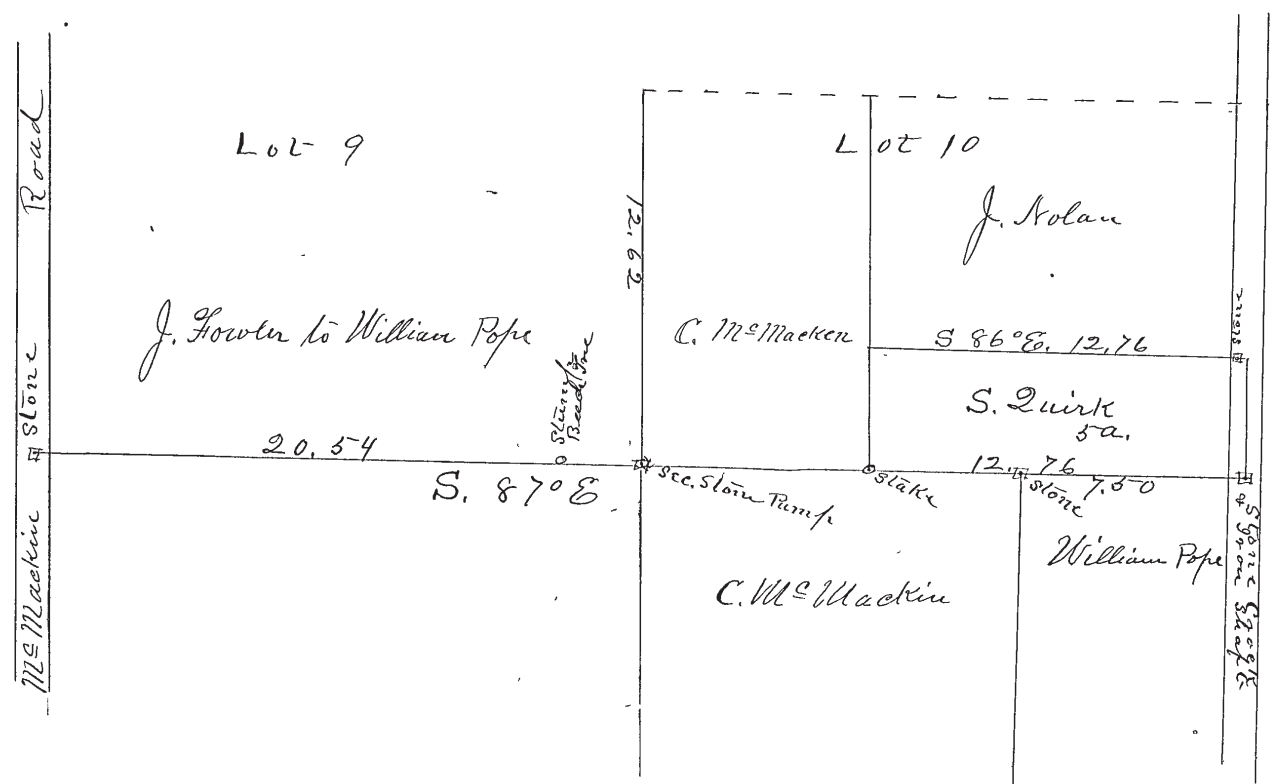
State of Ohio Lake County ss. Before me a Justice of the Peace in and for said County appeared the above said CALCULATIONS. W. H. Pope who being duly sworn declares

Table with columns: Star, Course, Distance, North, South, East, West, Longitude, Double-Areas, North, South, Remarks. Contains detailed survey data and witness testimonies.

I, H. N. Munson County Surveyor of Lake County, Ohio, do hereby certify, that I have surveyed and subdivided Lot. No. 9 + 10 in Tract No. 4 Township of Madison in accordance with the statutes of Ohio, and the laws of the United States. Surveyed pursuant to the application of William Pope and H. N. Munson County Surveyor. Oct. 20 + 24th A. D. 1892

Flaomen. Markers. Wallace Burnett William Corlett Tapemen.

LAKE COUNTY, OHIO.



Charles McMaekin sworn - says Ques 1st How long have you known these lines in controversy? I could not tell, I have owned the land for 40 or 50 years
 Ques 2^d Do you know of any marks on the line? Ans I do not know of any marks at all.
 Ques 3^d Do you remember a Beech tree standing on or near the line? Ans Yes I remember a Beech tree but I dont remember any marks on it - fit for a line tree.
 Ques 4th What mark was there at the corner of the Lot? Ans A Beech tree marked on four sides
 Ques 5th Can you tell the spot where it stood? Ans. Not a great way from where the 12 chains and 50 links would come.
 Ques 6th Do you remember a stake standing at the south west corner of S. Quirk's land and at the south east corner of your 10 1/2 acre lot about the year 1879?
 Ans. Yes there used to be a stake there put there when it was first surveyed out.
 (Signed) Chas. McMaekin

A. B. Guinn sworn says Ques. 1st How long have you known these lines in question Ans. Twenty years Ques 2^d Do you know of any marks by which to identify the line? Ans I never knew any marks at all Ques. 3^d By what can you identify the line? Ans. The fences and the location of fences considered the line as long ago as I knew it Ques 4th How does the fence now standing stand as regards the line as you remember it? Ans A little farther south at the east end Ques 5th How much farther south? Ans. I should think nearly the width of the fence Ques. 6th Do you remember anything about a certain marked Beech tree standing on or near the line? Ans I think I remember a Beech tree near the fence but I dont remember anything positive about it.
 Ques. 7th Were there any marks on it? Ans. I should think it was covered with marks.
 Ques 8th Do you know whether it was considered a line tree or not? Ans. I never heard it spoken of as a line tree till within the last week
 Ques. 9th Can you tell where the cor was at the Haines Road? Ans. No, I never knew
 (Signed) A. B. Guinn

State of Ohio }
 Lake County ss. }

Sworn to before me and subscribed in my presence by each witness to his own individual testimony this 24th day of October A. D. 1892
 H. N. Myerson
 Co. Surveyor