

RECORD OF SURVEYS,

Plat of *Survey*, No. *73*, *Perry* Town *11*, Range *7*

Survey made *October 11th & 14th* 1897, at the request of *James Shepherd agent & heirs of John Bowen*
 For the purpose of *dividing the estate of John Bowen as is shown on plat*

by *Frank M. Barber* County Surveyor.

DESCRIPTION.

Courses distances & contents given on plat.

CALCULATIONS.

Sta.	Course.	Distance	Latitude.		Departure.		Double Longitude.	Double Areas.		REMARKS
			North.	South.	East.	West.		North.	South.	

I, *County Surveyor of Lake County, Ohio*, do hereby certify, that I have surveyed and subdivided Lot. No. *61* in Tract No. *Township of Perry* in accordance with the statutes of Ohio, and the laws of the United States. Surveyed pursuant to the application of *James Shepherd and heirs of John Bowen, Oct 11 & 14* A. D. 1897.

County Surveyor.

} *Flagmen.*

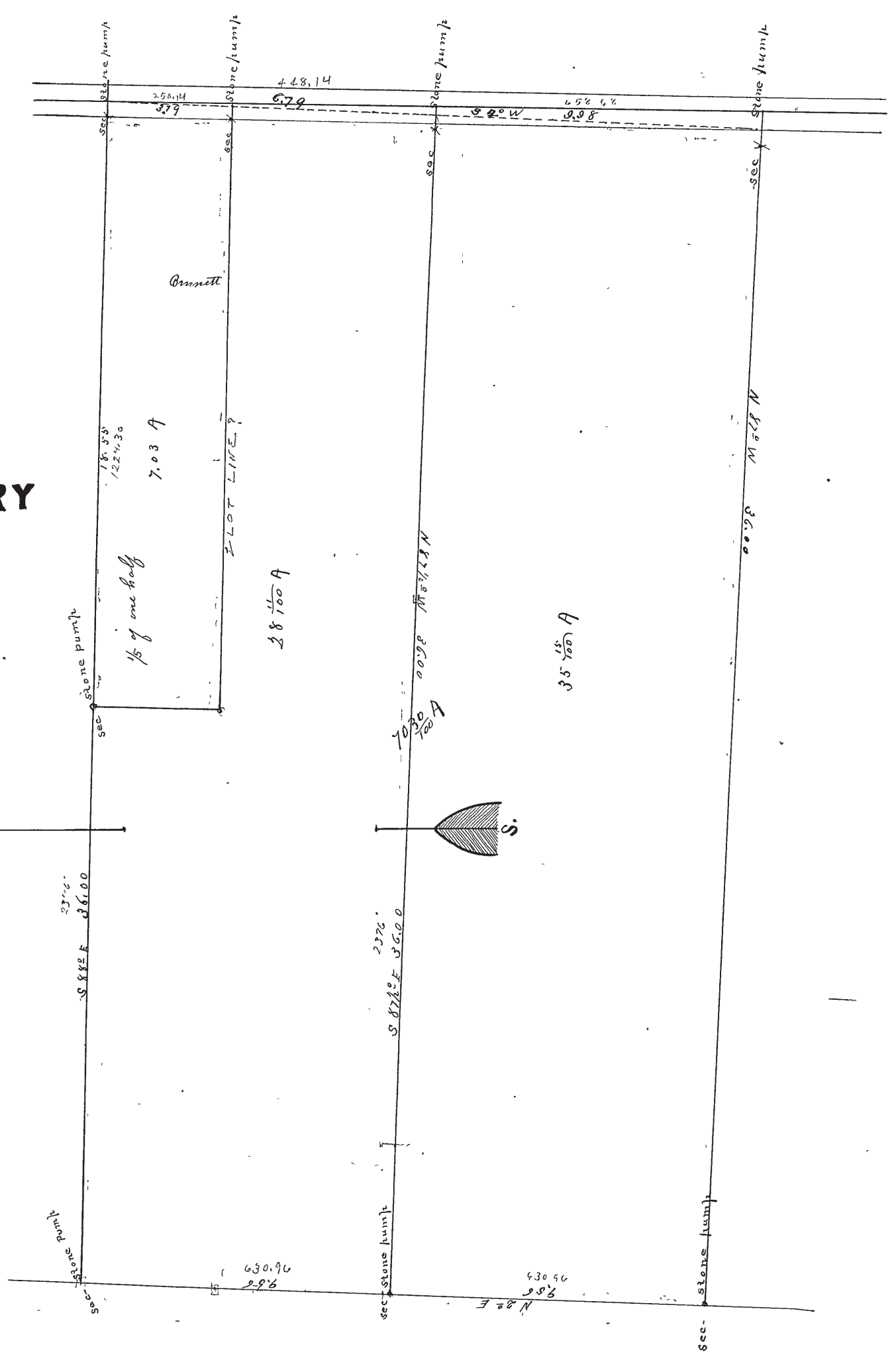
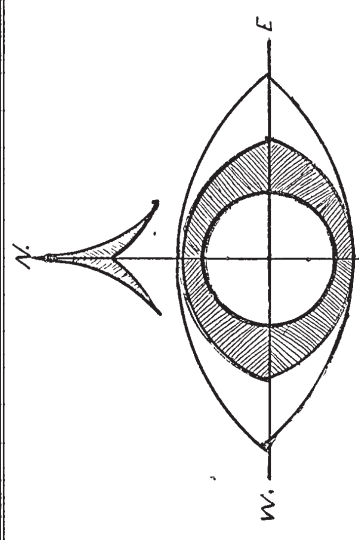
} *Markers.*

} *Tapemen.*

LAKE COUNTY, OHIO.

PLAT
of
SURVEY
PERRY

Lot 61.



stone monument

stone monument

Plane monument

stone monument

stone monument

stone monument

stone monument

stone monument

stone monument

18.58
1224.36

7.03 A

1/5 of one half

LOT LINE?

28 1/100 A

2030
1000

N 22 1/2 W 3600

35 1/100 A

N 82 1/2 W 3600

2372.0
S 88 1/2 E 3600

2372.0
S 87 1/2 E 3600

760.96
282

430.96
250.34
282

448.14
679

658.68
2 1/2 W