

RECORD OF SURVEYS,

Plat of Survey of County Line, No. 60, Town Concord, Range

Survey made Begun Dec 17, 1896 finished July 10, 1897, at the request of County Commissioners For the purpose of finding the dividing line or that portion of it between Lake & Geauga Counties known as Little Mountain & determine what portion of "the Pine Crest Hotel" the principle object to equalize the lots by

Surveyor's Report to County Clerk

To B. F. Crofoot, Clerk of Court of Common Pleas, in and for Lake County, Honorable Sir:

In obedience to an order from the Honorable Board of Commissioners of Lake County, dated December 8, 1896; the substance of which was to make a joint-survey with the County Surveyor of Geauga County, and find the true line dividing Lake and Geauga Counties, over and across what is known as "Little Mountain". The order directed us to begin said work on the 15th of December, 1896, but, owing to a severe storm on that day, we did not meet. On December 17th and 21st, 1896, we met and proceeded to search for monuments and marked trees, and make inquiries of the inhabitants along the line. We found marked trees that indicated a line, and stones that marked corners on said line. Owing to winter-weather and other uncontrollable difficulties, we did not resume our search and survey until June 5th, 1897. On that date, we met at the intersection of the old State road and the County-line road, which is about three (3) miles east of the Little Mountain. We took for our initial point, a stake we found driven on the east side of the State road and in the center of the said County road, which terminates at that point. We produced our line along the center of the said County-line road, and found the course to be N. 87° W., at a distance of 7927 1/10 feet, at Station 79+27 1/10. We found a stone in the S. W. Corner of land owned by Frank Woodruff, which was exactly in our line. We continued on the same course to Station 105, to the South-east corner of Tract 4, Concord Township, where we found a stone, which was also directly in our line. We continued the same course to Station 123+18 2/10, to the west line of a North and South road, and known as the Knob road, where we found a stone 1 1/2 feet south of our line.

CALCULATIONS.

Table with columns: Sta., Course, Distance, Latitude (North, South), Departure (East, West), Double Longitude, Double Areas (North, South), REMARKS. The table contains detailed survey data and handwritten notes describing the survey process, including stationing and monument placement.

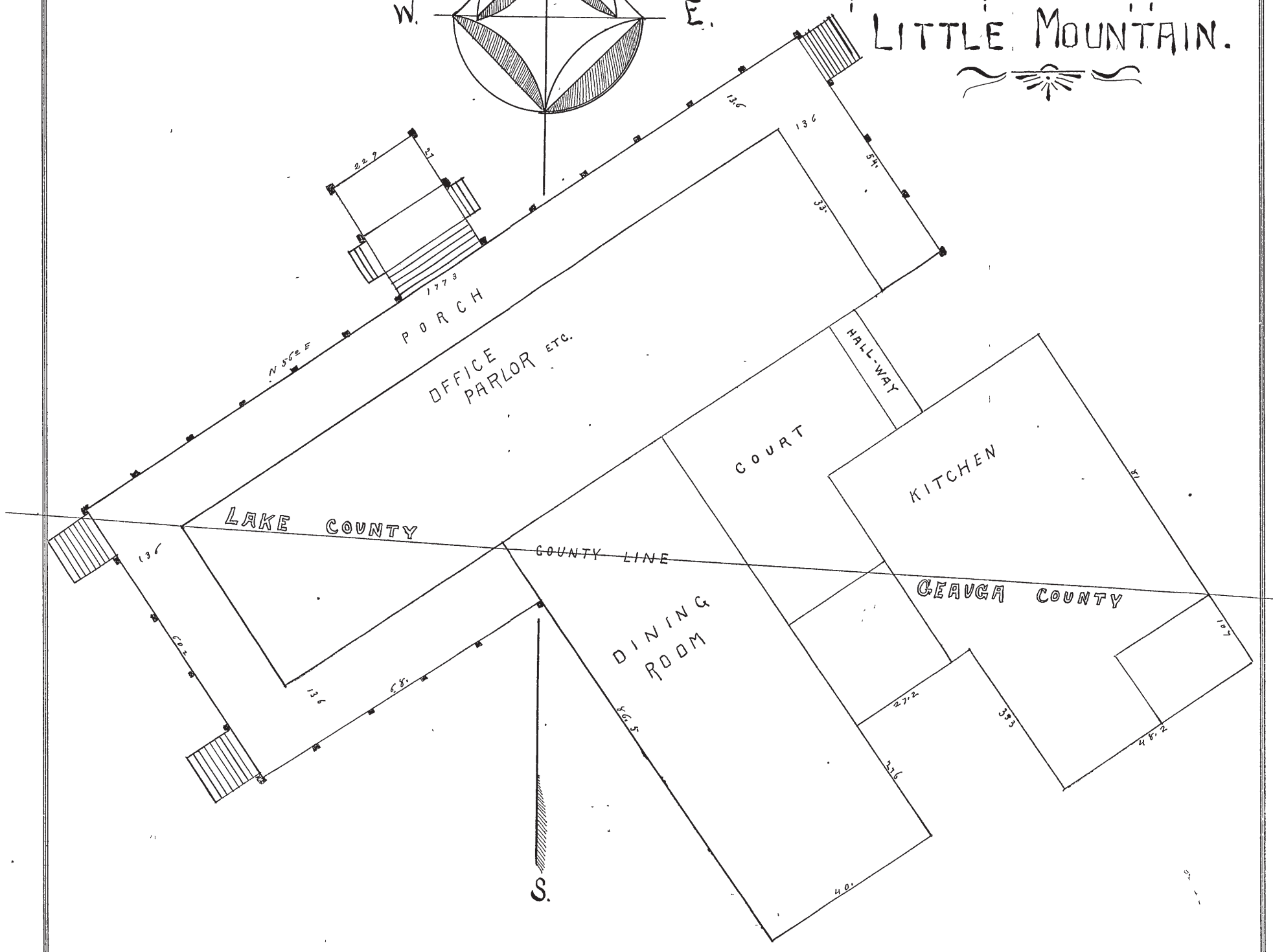
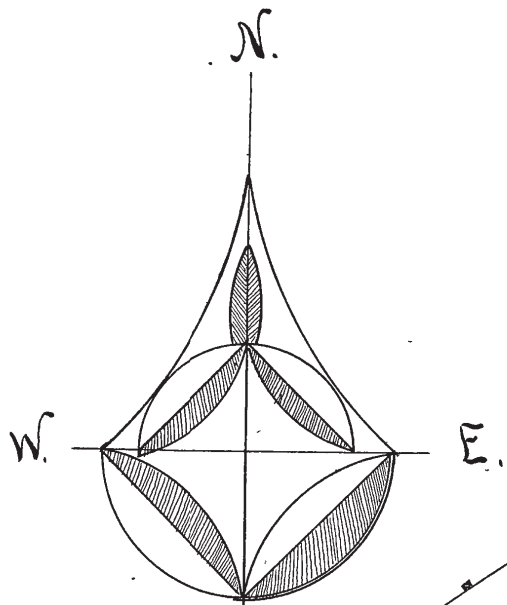
Frank W. Barber County Surveyor

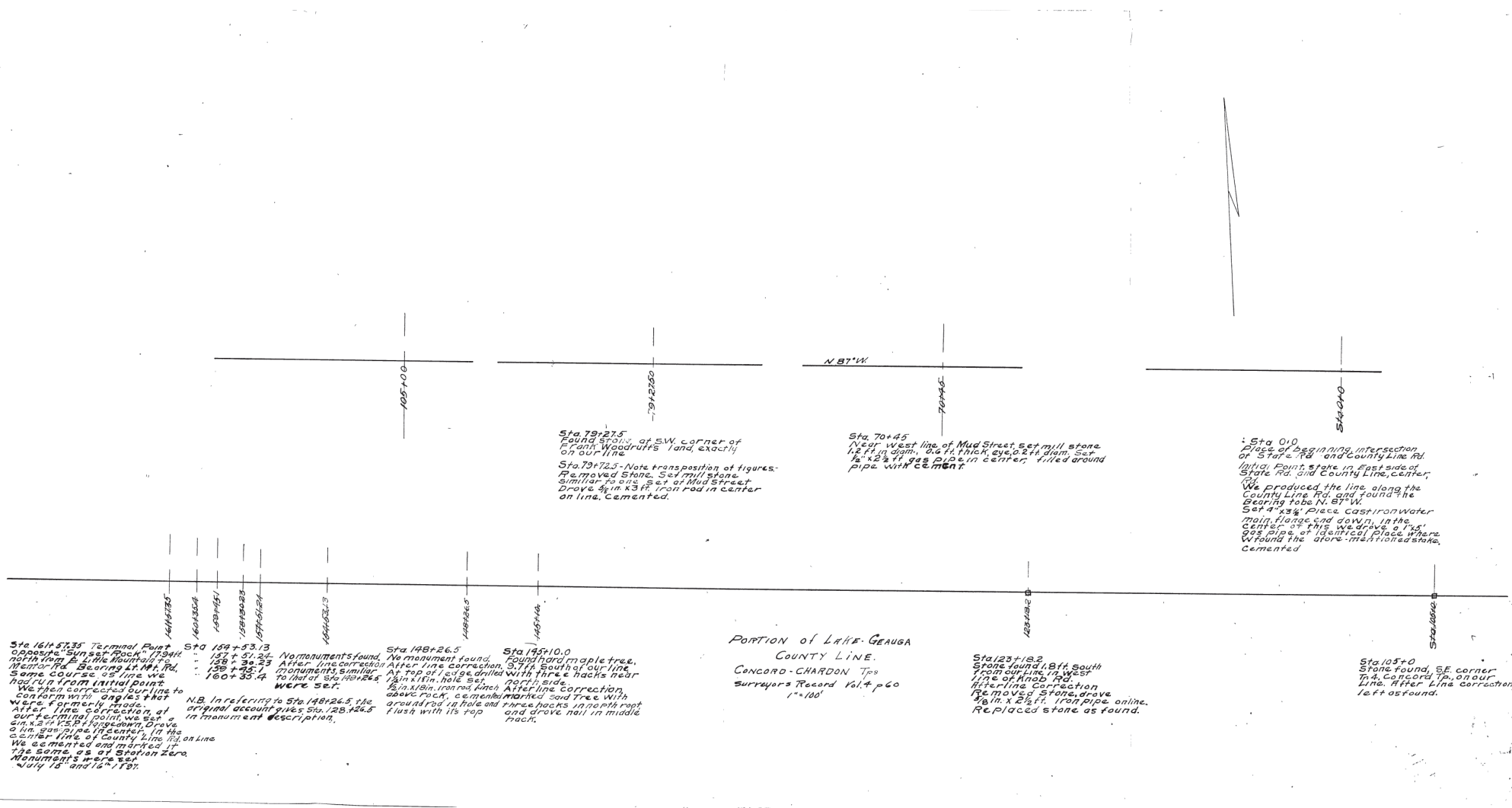
I, County Surveyor of Lake County, Ohio, do hereby certify, that I have surveyed and subdivided Lot. No. in Tract No. Township of in accordance with the statutes of Ohio, and the laws of the United States. Surveyed pursuant to the application of and A. D. 189 County Surveyor. Includes checkboxes for Flagmen and Markers.

LAKE COUNTY, OHIO.

GROUND PLAN

of
Pine Crest Hotel
LITTLE MOUNTAIN.





Sta. 79+27.5
 Found stone of SW corner of
 Grant Woodruff's land, exactly
 on our line.
 Sta. 79+72.5 - Note transposition of figures.
 Removed Stone. Set mill stone
 similar to one set of Mud Street.
 Drove 3/4" x 3/4" iron rod in center
 on line, cemented.

Sta. 70+45
 Near west line of Mud Street set mill stone
 1/2 ft. in diam, 3/4 ft. thick eye, 2 1/2 ft. diam. Set
 1/2" x 3/4" iron pipe in center, filled ground
 pipe with cement.

Sta. 0+0
 Place of beginning intersection
 of State Rd. and County Line Rd.
 (off) Point Stone in East side of
 State Rd. and County Line, center.
 We produced the line along the
 County Line Rd. and found the
 bearing to be N. 87° W.
 Set 3/4" x 3/4" cast iron water
 main flange and down, in the
 center of this we drove a 1 1/2"
 dia pipe of identical place where
 we found the above mentioned stone,
 cemented.

Sta. 144+57.35 Terminal Point
 opposite "Sunset Rock" 1794K
 north from E. L. Mc. Mountain Rd.
 bearing N. 87° W. Rd.
 same course as line we
 had run from initial point.
 We then corrected bearing to
 conform with angles that
 were formerly made.
 After line correction, of
 curve, terminal point we set a
 3/4" x 3/4" iron pipe in center, in the
 center line of County Line Rd.
 We cemented and marked it
 the same as at Station 280.
 Monument's were set
 N. 87° W. and 1794K.

Sta. 144+53.13
 - 137 + 31.24
 - 138 + 38.53
 - 139 + 45.84
 - 140 + 53.13
 monuments found. No monument found.
 After line correction, 97 ft. south of our line.
 monuments similar. At top of ledge drilled with three nails near
 to that of Sta. 144+26.5. 1/2" x 3/4" iron pipe set
 in x 3/4" iron rod, lined. After line correction
 above rock, cement marked and tree with
 around rod in hole and three nails in north part
 flush with its top and drove nail in middle
 back.

Sta. 144+26.5
 Found hard maple tree.
 After line correction, 97 ft. south of our line.
 At top of ledge drilled with three nails near
 north side.
 1/2" x 3/4" iron rod, lined. After line correction
 above rock, cement marked and tree with
 around rod in hole and three nails in north part
 flush with its top and drove nail in middle
 back.

PORTION OF LAKE GEauga
 COUNTY LINE.
 CONCORD-CHARDON TPO
 Surveyors Record Vol. 1 p. 60
 1" = 100'

Sta. 123+18.2
 Stone found 1.8 ft. south
 from our line, in west
 line of Anod Rd.
 After line correction
 1 1/2" x 3/4" iron pipe, drove
 1/2" x 3/4" iron pipe online.
 Replaced stone as found.

Sta. 103+0
 Stone found, SE corner
 in Concord TPO, on our
 line. After line correction,
 left as found.