

# LAKE COUNTY, OHIO.

## PLAT and SURVEY OF THE RAPLEE FARM

in Lot 6, Tract 3, Township 12N, Range 10W,  
that is, Madison Twp., Lake County, Ohio

The courses, distances, and other particu-  
lars in this plat are correct  
July 31, 1906  
Scale: 200' = 1" *J. Dewey*  
County Surveyor.

### Contents:

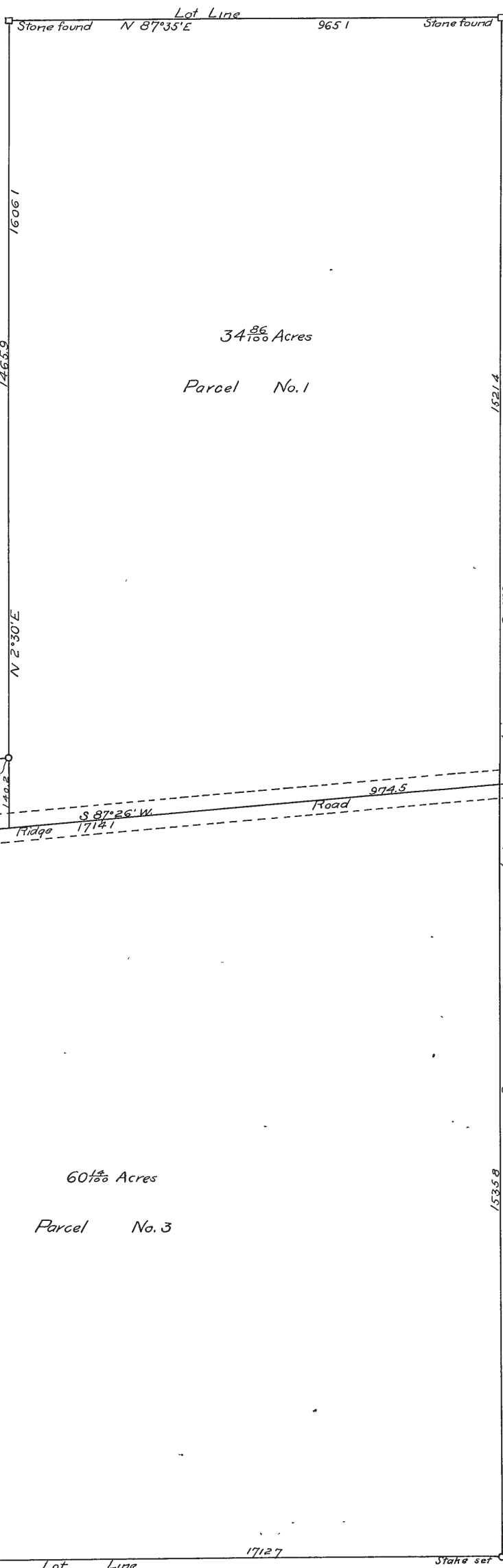
34.86  
60.14  
0.76  
95.76 = Total

Scale: 200' = 1"



C. Chamberlain

J S Fowler



H. Dewey

# RECORD OF SURVEYS,

Plat of \_\_\_\_\_, No. \_\_\_\_\_, Town 12 N., Range 10 W.

Survey made 189 \_\_\_\_\_, at the request of \_\_\_\_\_  
 For the purpose of \_\_\_\_\_

by \_\_\_\_\_ County Surveyor.

### DESCRIPTION.

### CALCULATIONS.

Sta.	Course	Distance.	Latitude.		Departure.		Double Longitude.	Double Areas.		REMARKS.
			North.	South.	East.	West.		North.	South.	
	N. 2° 30' E S. 87° 35' E S. 2° 18' W S. 87° 26' W	1606.1 965.1 1521.4 974.5	1604.5	40.7 1520.2 43.6 1604.5	70.1 964.3 61.0 973.4 1034.4	70.1 1104.5 2007.8 973.4	112475 112475	44953 3052258 42440 3149651 112475 3037176	1518588 = 34.86 Acres	
	The parallelogram No. 2 contains 0.76 Acres									
	N. 2° 30' E N. 87° 26' E S. 2° 18' W N. 87° 42' W	1390.4 1714.1 1535.8 1712.7	13890 76.8 68.7	60.6 1712.3 1534.5	60.6 1833.5 3484.2 1711.3	84173 140813 224986	84173 140813 224986	5346505 117566 5464071 224986 5239085	2619542.5 = 60.14 Acres	

I, \_\_\_\_\_ County Surveyor of Lake County, Ohio, do hereby certify, that I have surveyed and subdivided Lot. No. 6 in Tract No. 3 Township of Madison in accordance with the statutes of Ohio, and the laws of the United States. Surveyed pursuant to the application of \_\_\_\_\_ and \_\_\_\_\_

A. D. 189  
County Surveyor.

} Flagmen.  
} Markers.

} Tapemen.