

# Record of Surveys,

Plat of Survey, No. 78, Willoughby Town 9, Range 10

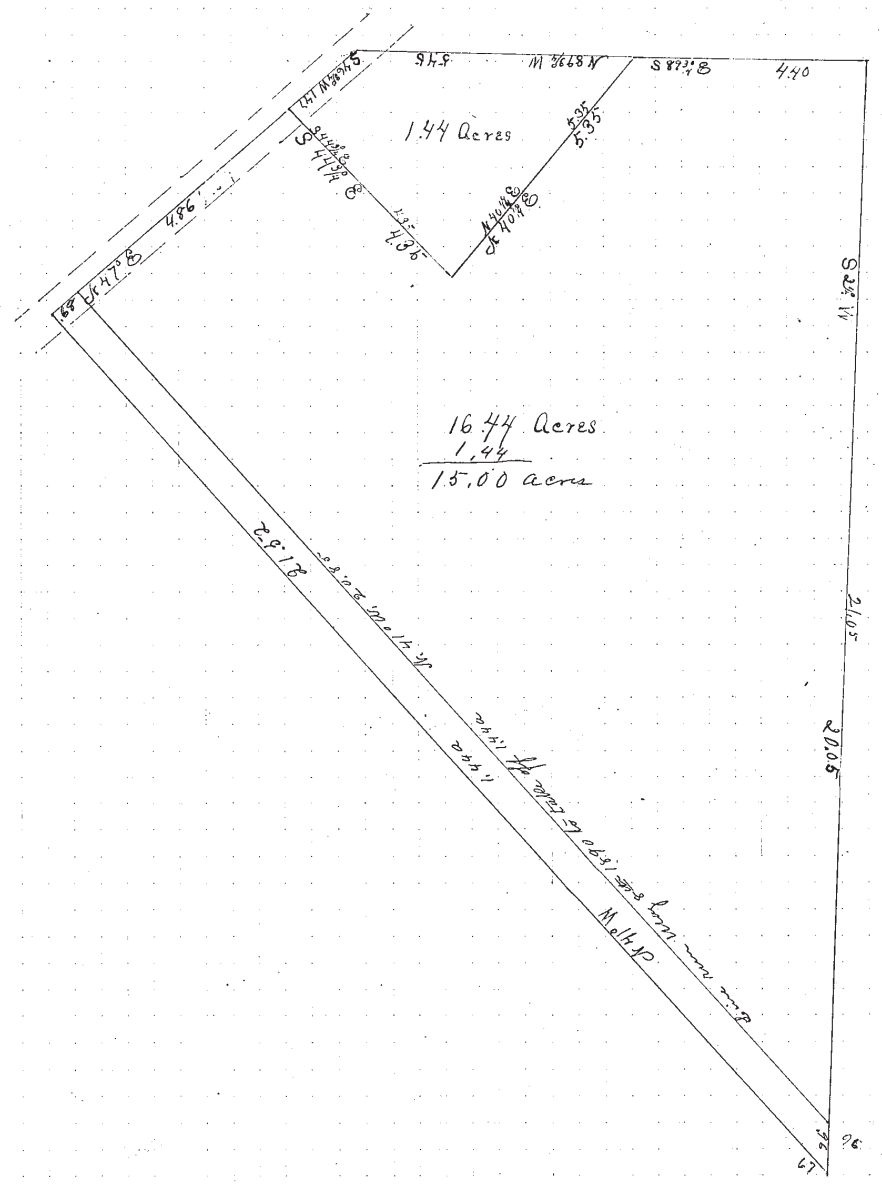
Survey made Dec. 9<sup>th</sup> 1889, at the request of E. W. Jones  
For the purpose of Conveying 15 acres

by H. N. Munson County Surveyor.

### DESCRIPTION.

### CALCULATIONS.

Sta.	Course.	Distance.	Latitude.		Departure.		Double Longitude.	Double Areas.		REMARKS.
			North.	South.	East.	West.		North.	South.	
	S 89 3/4° E	4.40		2	4.40		4.40		880	
	S 2 1/4° W	21.01		2100		83	88		172200	
	N 41° W	21.52	1624			1412	1678	2562672		
	N 47° E	5.54	378		405		2685	977180		
	S 44 1/2° E	4.35		390	307		1878		578757	
	N 40 1/2° E	5.35	409		343		1229	500207		
			2411	2411	1495	1495		4040009	751837	
								251887		
								31288172		16.44 Acres
										76.44 Acres
	S 46 3/4° W	1.47		101		107	107		10807	Error made Dec. 9 <sup>th</sup> 89
	S 44 3/4° E	4.35		316	307	307	307		95170	by getting in 1.44 acres too
	N 40 1/2° E	5.35	409		343		959	392231		which by deducting school lot
	N 38 3/4° W	5.45	02		545	739	1518			which was corrected as
			411	411	652	652		398749	105927	shown on Plat. May 8 <sup>th</sup> 1890
								105927		H. N. Munson
								2128722		Co. Surveyor
								1.44 Acres		



I, H. N. Munson County Surveyor of Lake County, Ohio, do hereby certify, that I have surveyed and subdivided Lot No. 4 in Tract No. 8,  
Township of Willoughby in accordance with the statutes of Ohio, and the laws of the United States.  
Surveyed pursuant to the application of E. W. Jones and Dec. 9<sup>th</sup> A. D. 1889 + May 8<sup>th</sup> 1890  
H. N. Munson County Surveyor.

Flagmen. \_\_\_\_\_  
Markers. \_\_\_\_\_  
Tapemen. \_\_\_\_\_