

# Record of Surveys,

# Lake County, Ohio.

Plat of *Wilcox Add.*, No. 62, Painesville Town 11, Range 8

Survey made *July 1<sup>st</sup>* 1889, at the request of *Charles A. Wilcox*  
For the purpose of *Subdividing into Lots*

by *H. N. Munson* County Surveyor.

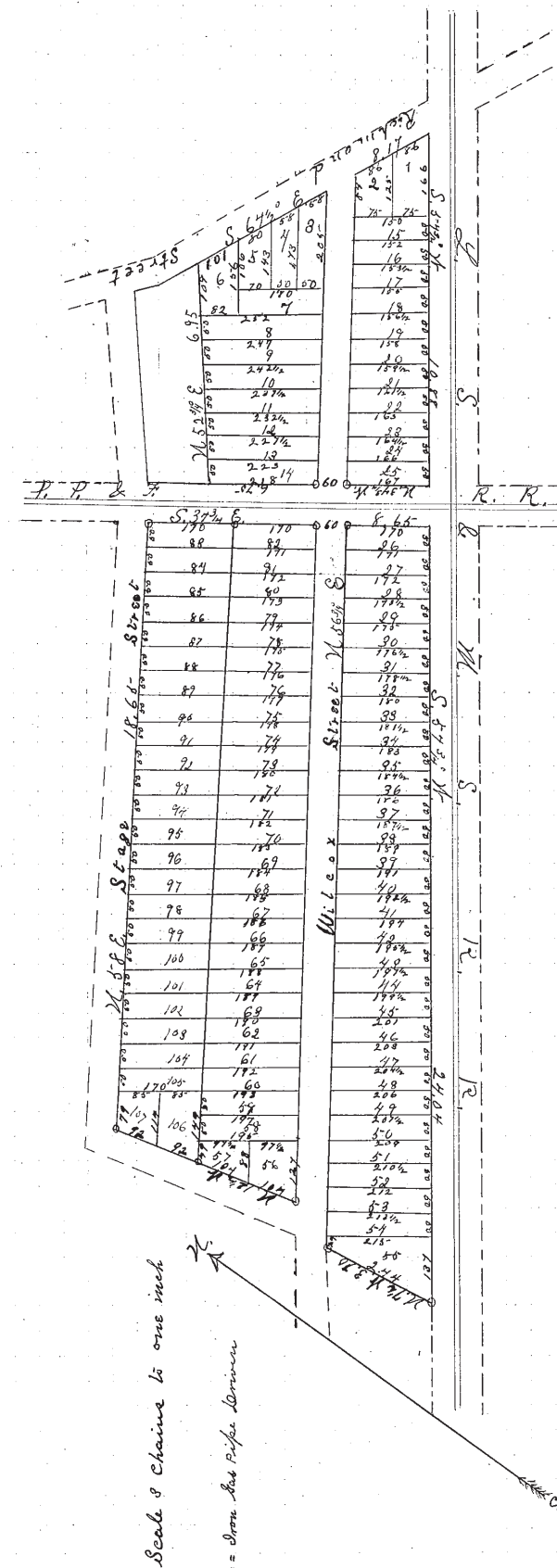
### DESCRIPTION.

Beginning at a piece of Iron Gas Pipe, driven in the South line of Stage Street and the west line of P. P. & G. R. R. thence S. 54 3/4° E. along the westerly line of said P. P. & G. R. R. 8 chains + 6 1/2 links to a post in the Northern line of the C. S. & M. S. R. R. thence with the Northernly of said C. S. & M. S. R. R. S. 54 3/4° W. 24 chains + 4 links to a piece of Gas Pipe thence N. 7 1/4° W. 3 chains + 70 links to the a piece of Gas Pipe in the South line of Stage Street thence N. 57 3/4° E. 1 chain + 6 links. Area to the angle of Stage Street thence with the easterly line of said Street N. 12 1/2° W. 6 chains + 8 1/2 links to a Gas Pipe in the angle of Stage Street thence with the Southernly line of Stage Street S. 58° E. 18 chains + 6 1/2 links to the place of beginning. Containing 19 3/100 acres of land

Laid out above land into lots as shown on Plat. Wilcox Street 60 feet wide beginning in the South line of it in the South line of Stage St. at a Gas Pipe in the west line of above described land, and runs N. 56 3/4° E. to the East Richmond Road. The part East of the P. P. & G. R. R. being divided up from Measurements made by E. Huntington Esq. which Survey is recorded in Lake Co. Records record of Plats.

### CALCULATIONS.

Sta.	Course.	Distance.	Latitude.		Departure.		Double Longitude.	Double Areas.		REMARKS.
			North.	South.	East.	West.		North.	South.	
	S 54 3/4° E	8.65		7.07	4.73		36.55		2591394	
	S 54 3/4° W	27.64		13.84		19.63	21.85		3624040	
	71 7 1/2° W	3.70	3.68			47	175	64400		
	71 5 1/2° E	1.06	66			.84	212	13992		
	71 12 1/2° W	6.83	6.68			1.48	178	98864		
	71 58° E	18.65	9.80			18.81	18.81	1865190		
			71.92	71.93	21.58	21.58		1742446	5615435	
								1742446	1742446	
								219872989		
								1936	Acres	



I, *H. N. Munson* County Surveyor of Lake County, Ohio, do hereby certify, that I have surveyed and subdivided Lot No. 11 in Tract No. 4 & part of Tract 13 Township of *Painesville* in accordance with the statutes of Ohio, and the laws of the United States. Surveyed pursuant to the application of *Charles A. Wilcox* and *July 1<sup>st</sup>* A. D. 1889

*H. N. Munson* County Surveyor.

Flagmen.

*H. E. Munson*  
*C. A. Wilcox* Tapemen.

Markers.

1936 Acres