

Record of Surveys,

Lake County, Ohio.

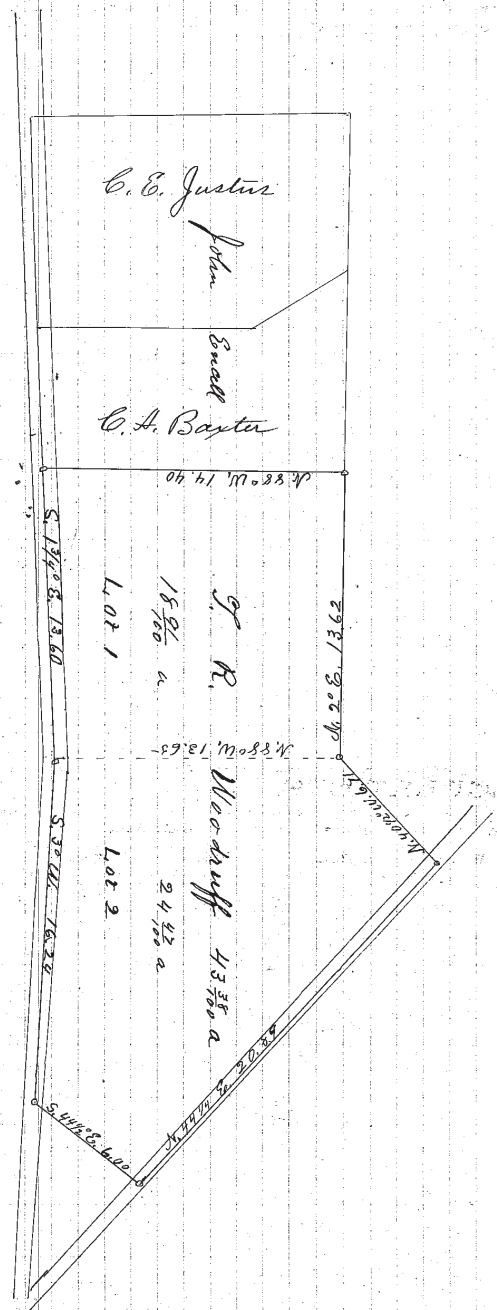
Plat of *Survey*, No. *4*, Town *Mentor* 10, Range *9*
 Survey made *Jan 26th* 1886, at the request of *G. R. Woodruff*
 For the purpose of *ascertaining amount of land + locating his north line*
 by *H. S. Munson* County Surveyor.

DESCRIPTION.

Survey of a part of Lot No. 1 + 2 in Tract No one in Mentor Township, being lands sold by E. Rounty to G. R. Woodruff

CALCULATIONS.

Sta.	Course.	Distanc.	Latitude.		Departure.		Double Longitude.	Double Areas.		REMARKS.
			North.	South.	East.	West.		North.	South.	
	S. 17 1/4° E.	13.60		13.61	.42		128		174208	
	S. 3° W.	16.24		16.24		.85	85		138040	
	S. 44 1/2° E.	6.00		4.28	4.20		420		179760	
	N. 44 1/4° E.	20.89	14.93		14.55		2295	3426435		
	N. 40 1/2° W.	6.71	5.10			4.37	3313	1289630		
	N. 2° E.	13.62	13.60		.47		2923	3973280		
	N. 88° W.	14.40	.50		14.42		1528	76400		
			34.13	34.13	19.64	19.64		9167745	492008	
								492008		
								28675737		
								43382-		



I, *H. S. Munson* County Surveyor of Lake County, Ohio, do hereby certify, that I have surveyed and subdivided Lot No. *1 + 2* in Tract No. *One* Township of *Mentor* in accordance with the statutes of Ohio, and the laws of the United States.
 Surveyed pursuant to the application of *G. R. Woodruff* and *H. S. Munson* County Surveyor. *Jan 26th* A. D. 1886
 } Flagmen.
 } *G. R. Woodruff* }
 } *H. S. Munson* } Tapemen.