

Record of Surveys,

Lake County, Ohio.

Plat of Leroy Cemetery, No. 27, Leroy, Town 10, Range 7

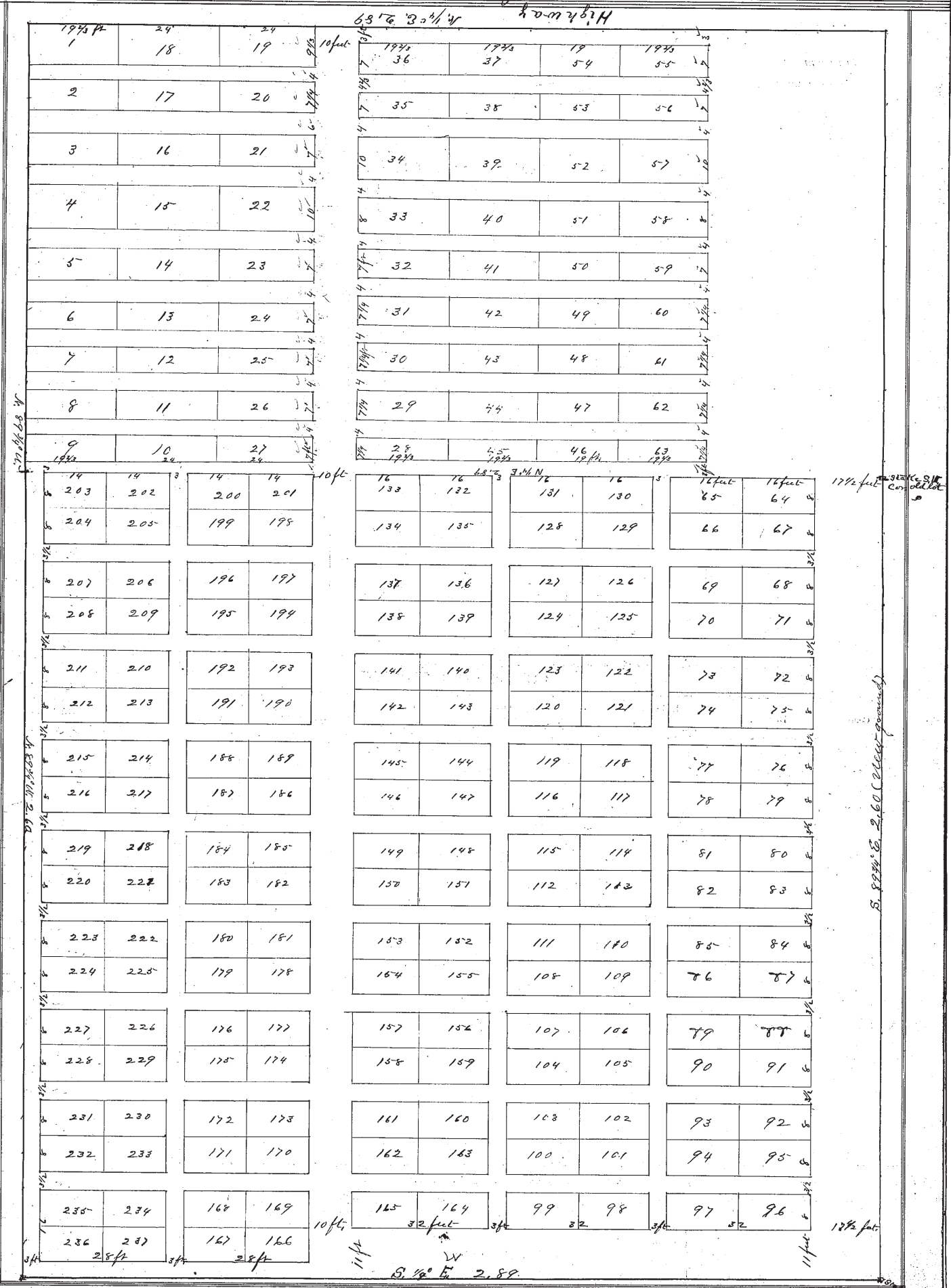
Survey made Sept. 29th 1887, at the request of O. W. Basquin & others Trustees
For the purpose of purchasing 3/4 acre of land of Don Williams and laying it out into burying lots as an annexation to the old cemetery laid out by M. S. Harvey by County Surveyor.

DESCRIPTION.

Beginning at a stake at the S.W. corner of land now belonging to Cemetery Lot in Lot No. 46 of Leroy Tp. thence with the west line of the old grounds N. 1/4° E. 2 chains + 89 links to the N.W. corner. thence N. 89 3/4° W. 2 chains + 60 links to a stake. thence S. 1/4° W. 2 chains + 89 links to a stake. thence S. 89 3/4° E. 2 chains + 60 links to the place of beginning.
Containing 3/4 of an acre of land

CALCULATIONS.

Sta.	Course.	Distance.	Latitude.		Departure.		Double Longitude.	Double Areas.		REMARKS.
			North.	South.	East.	West.		North.	South.	
	N. 1/4° E.	2.89	2.89		.01		1	2.89		
	N. 89 3/4° W.	2.60	.01		2.60		2.60	2.60		
	S. 1/4° W.	2.89		2.89	1		5.21	15.0569		
	S. 89 3/4° E.	2.60		1	2.60		2.62	2.62		
			2.90	2.90	2.61	2.61		5.49	15.0831	
								5.49		
								211.50282		
								.75 a.		



I, R. W. Wilson County Surveyor of Lake County, Ohio, do hereby certify, that I have surveyed and subdivided Lot No. 46 in Tract No. _____
 Township of Leroy in accordance with the statutes of Ohio, and the laws of the United States.
 Surveyed pursuant to the application of Trustees and _____
 _____ Sept. 29th A. D. 1887
R. W. Wilson County Surveyor.
 _____ } Flagmen.
 _____ }
 _____ } Markers.
 _____ }
 _____ } Tapemen.