

Record of Surveys,

Lake County, Ohio.

Plat of *Survey*, No. *21*, *Mentor* Town *10*, Range *9*

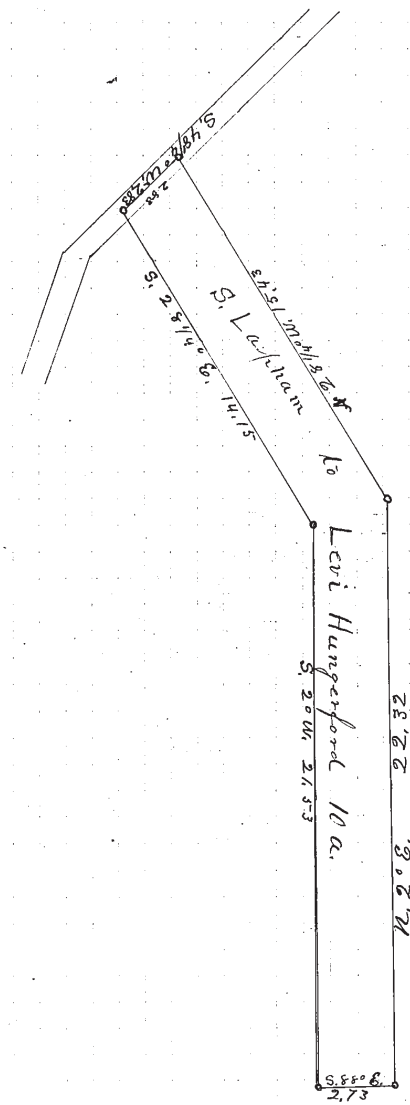
Survey made *August 12th* 1887, at the request of *Samuel Lapham*
For the purpose of *conveying 10 acres to Levi W. Hungenford*

by *H. N. Munson* County Surveyor.

DESCRIPTION.

CALCULATIONS.

| Sta. | Course. | Distance. | Latitude. | | Departure. | | Double Longitude. | Double Areas. | | REMARKS. |
|------|---------------|-----------|-----------|--------|------------|-------|-------------------|---------------|----------|----------|
| | | | North. | South. | East. | West. | | North. | South. | |
| | S. 28 1/4° E. | 14.15 | | 12.44 | 6.70 | | 6.70 | | 83.3480 | |
| | S. 2° W. | 21.53 | | 21.30 | | 75 | 12.63 | | 271.9750 | |
| | S. 88° E. | 2.73 | | 10 | 2.70 | | 14.60 | | 14.600 | |
| | N. 2° E. | 22.23 | 2.227 | | 78 | 8.32 | 18.08 | 4626.416 | | |
| | N. 28 1/4° W. | 15.43 | 13.62 | | | 7.32 | 11.54 | 15.71748 | | |
| | S. 48 1/4° W. | 2.83 | | 1.85 | | 2.11 | 2.11 | 53.98164 | 39.035 | |
| | | | 3.589 | 3.589 | 10.18 | 10.18 | | 36.06865 | 3.06865 | |
| | | | | | | | | 2199.1229 | | |
| | | | | | | | | 9.96a | | |



I, *H. N. Munson* County Surveyor of Lake County, Ohio, do hereby certify, that I have surveyed and subdivided ^{part of} Lot No. *9* in Tract No. *10*, Township of *Mentor* in accordance with the statutes of Ohio, and the laws of the United States.
 Surveyed pursuant to the application of *Samuel Lapham* and *Levi W. Hungenford*, *Aug 12th* A. D. 1887
H. N. Munson County Surveyor.

 } Flagmen.

 }

 } Markers.

 }

 }

 } Tapemen.
