

Record of Surveys,

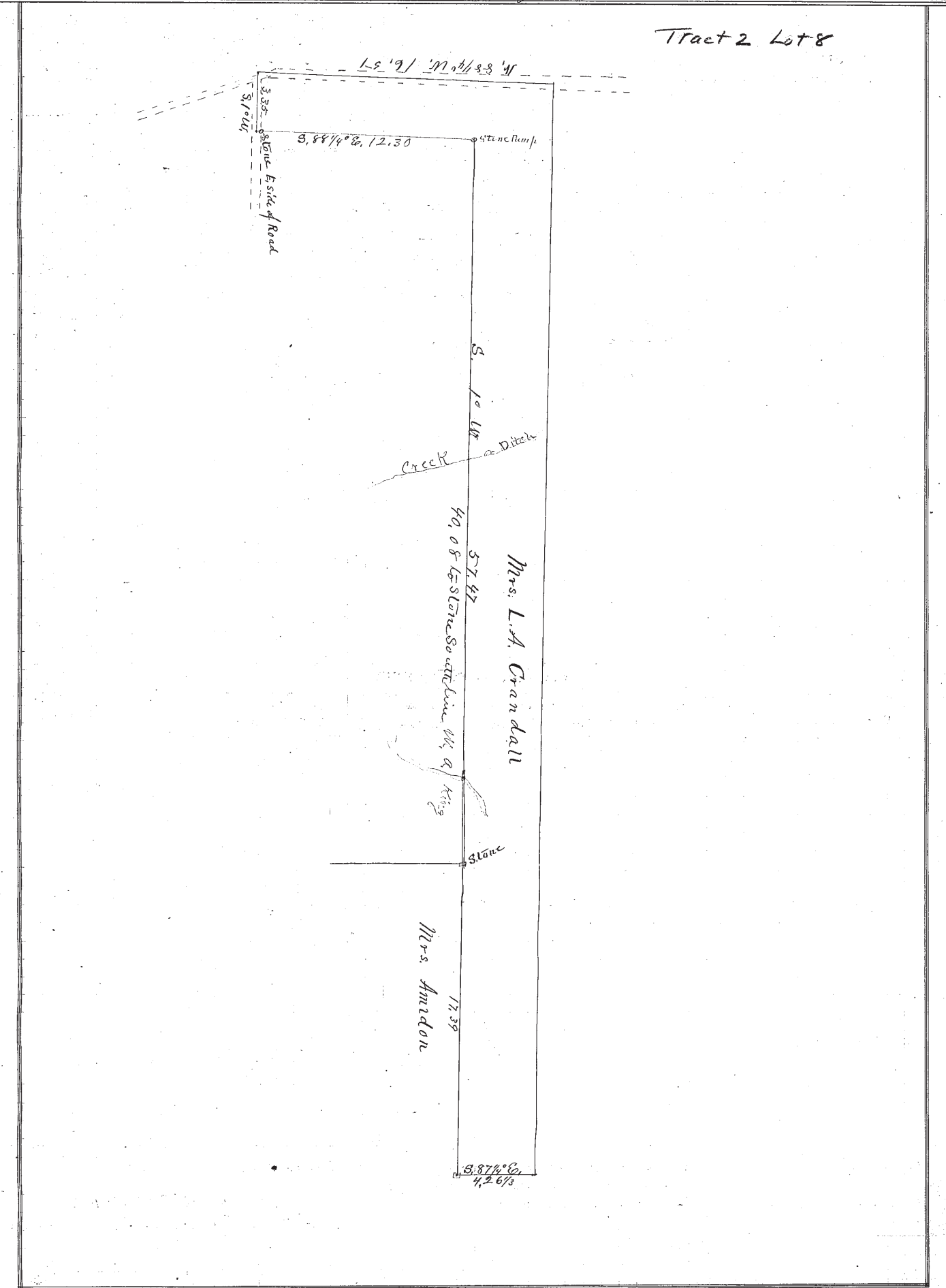
Plat of Survey, No. 17 Madison Town 11 Range 6
 Survey made March 3rd 1887, at the request of Mrs. L. A. Crandall
 For the purpose of establishing the line between her land and land of
Mary A. King
 by H. N. Munson County Surveyor.

DESCRIPTION.

Beginning at the North East corner of Mrs. L. A. Crandalls land in the center of the road, thence with the center of the road to the angle and continuing in a straight line until intersect a line prolonged with the center of the North + South road N. 88 1/4° W. 16 chains + 57 links, thence with the center of the N. + S. road S. 1° W. 3 chains 35 links. (set a stone in the south line on east side of road.) thence S. 88 1/4° E. 12 chains + 30 links to a piece of stone pump set in ground, thence S. 1° W (at 18 chains crossed creek, at 36 chains crossed Ditch, at 40 chains + 8 links found old stone at South East corner Mary A. Kings land + North East corner Mrs. Amidons land) 57 chains 47 links to a stone.

CALCULATIONS.

Sta.	Course.	Distance.	Latitude.		Departure.		Double Longitude.	Double Areas.		REMARKS.
			North.	South.	East.	West.		North.	South.	



I, H. N. Munson County Surveyor of Lake County, Ohio, do hereby certify, that I have surveyed and subdivided Lot No. _____ in Tract No. _____
 Township of Madison in accordance with the statutes of Ohio, and the laws of the United States.
 Surveyed pursuant to the application of Mrs. L. A. Crandall and _____
March 3 A. D. 1887
H. N. Munson County Surveyor.

 } Flagmen.

 }

 } Markers.

 }

 } Tapmen.