

Record of Surveys,

Lake County, Ohio.

Plat of Survey, No. 159, Willoughby Town 9, Range 10

Survey made May 13<sup>th</sup> 1881, at the request of Simon Arnold  
 For the purpose of establishing boundary lines

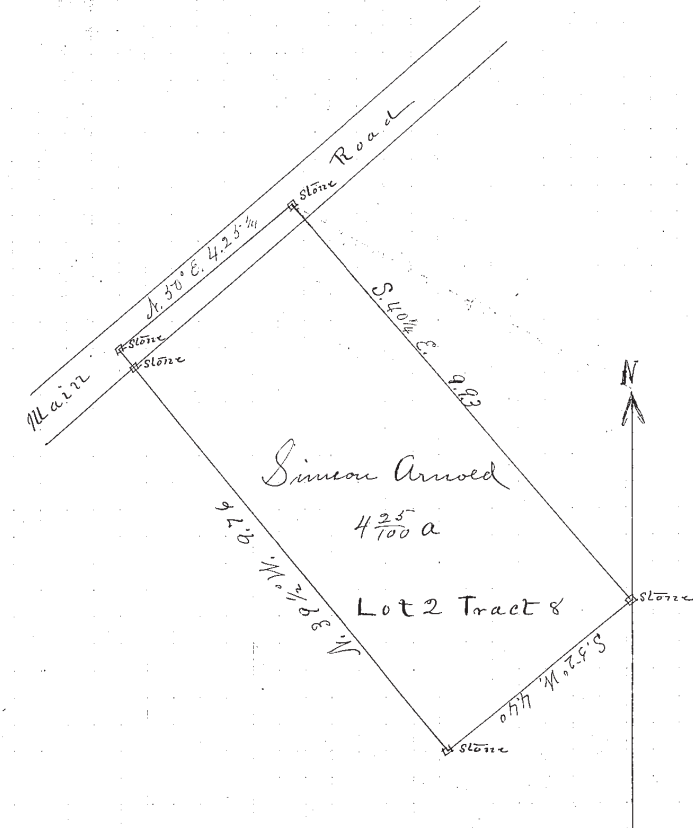
by G. C. Munson County Surveyor.

DESCRIPTION.

Survey of a part of lot No. 2 in Tract No. 8, Willoughby township.  
 Courses, Distances, & Contents given on plat.

CALCULATIONS.

Sta.	Course.	Distance.	Latitude.		Departure.		Double Longitude.	Double Areas.		REMARKS.
			North.	South.	East.	West.		North.	South.	
	N. 49 3/4° E.	4.25 1/4	2.74		3.25		3.25	8.9037		
	S. 40 1/4° E.	9.93		7.56	6.44		12.94	97.8264		
	S. 52° W.	4.40		2.70		3.47	1.591	42.9570		
	N. 39 1/2° W.	9.76	7.52		6.22		6.22	46.7744		
			10.26	10.26	9.69	9.69		55.6794	140.7834	
								55.6794	55.6794	
								218510.40	42.5520	



I, G. C. Munson County Surveyor of Lake County, Ohio, do hereby certify, that I have surveyed and subdivided Lot No. 2 in Tract No. 8  
 Township of Willoughby in accordance with the statutes of Ohio, and the laws of the United States.  
 Surveyed pursuant to the application of Simon Arnold and May 13<sup>th</sup> 1881 A. D. 1881  
G. C. Munson County Surveyor.

\_\_\_\_\_ } Flagmen.  
 \_\_\_\_\_ }  
 \_\_\_\_\_ } Markers.  
 \_\_\_\_\_ }  
 \_\_\_\_\_ }  
 \_\_\_\_\_ } Tapemen.