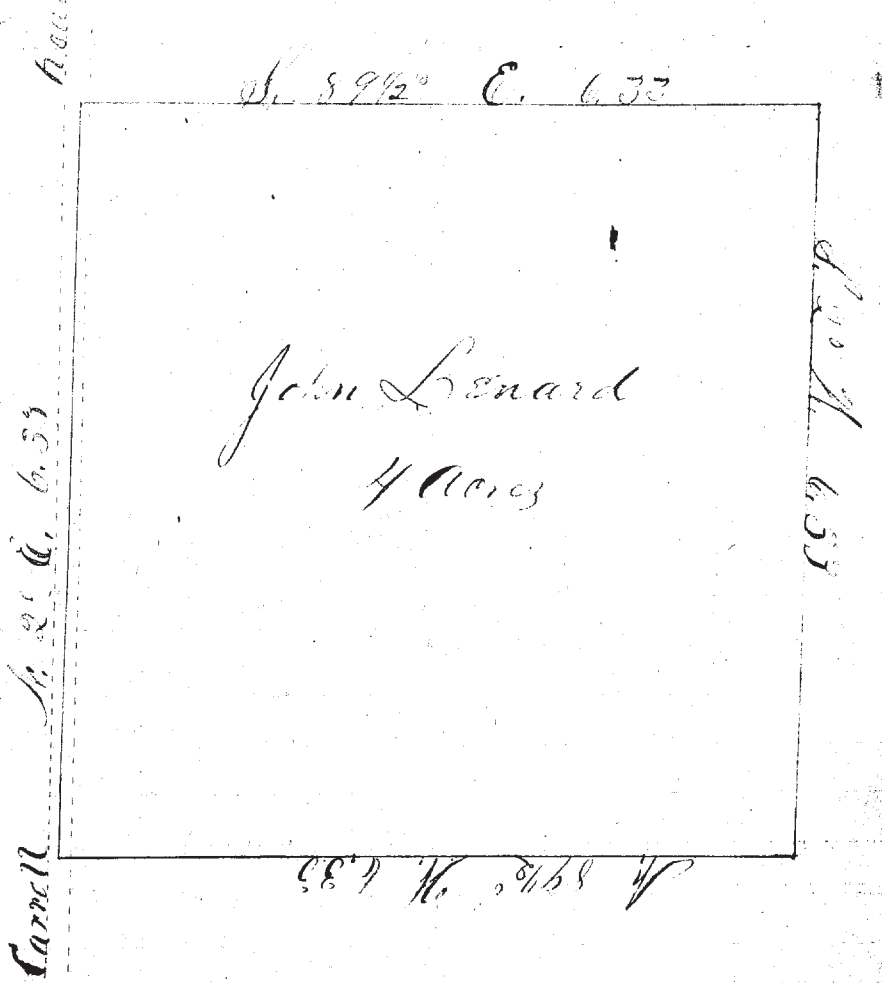


Survey & division of land belonging to the heirs of C. Hopkins, known as a part of Lots no. 1 & 2 in Tract no. 8 in Mentor township containing in all  $45 \frac{46}{100}$  acres and divided as shown by the above plat.

Surveyed Jan. 3<sup>rd</sup> 1866, H. N. Munson Co. Surveyor



Mentor July 19<sup>th</sup> 1867  
 Surveyed four acres of land sold for taxes from the North West corner of the Ely Lot in Mentor.