

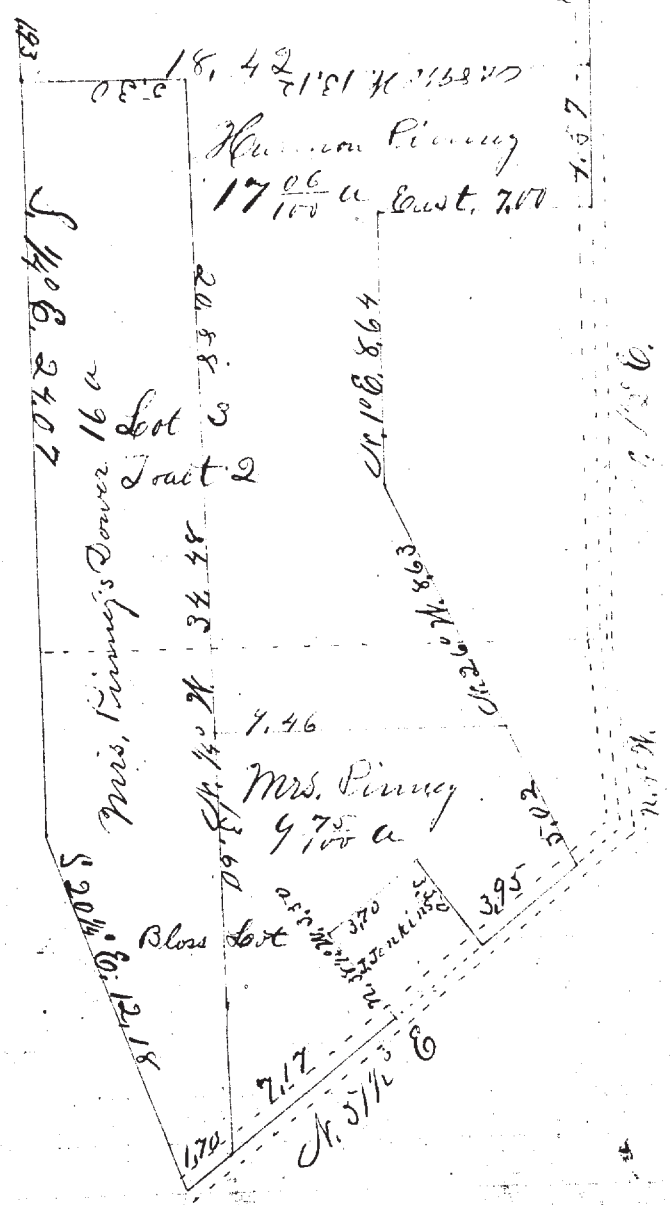
No. 25

S. 1/2 N. 6. 78

N. 42° 20' W.

L. Loopy. 24.93 a.

S. 89 1/2° E. 8.03



Survey & Subdivision of parts of Lot no. 3. in Tract no. 2 and the Bloss Lot in Mentor. township for the heirs of R. Pinery & divided as shown by the above plat.
 July 15th 1865 H. N. Munson Co. Surv.

116.26

Survey of the west line of Smith Street in Kentland Village as is shown by the town Plat of said Village is given at a stake from which the S. E. corner of the Morrison Temple was N. 88 1/4° W. distant 75 links. The west line of Smith Street S. 1 1/4° W.

Surveyed July 18th 1865 H. N. Munson Co. Surveyor

