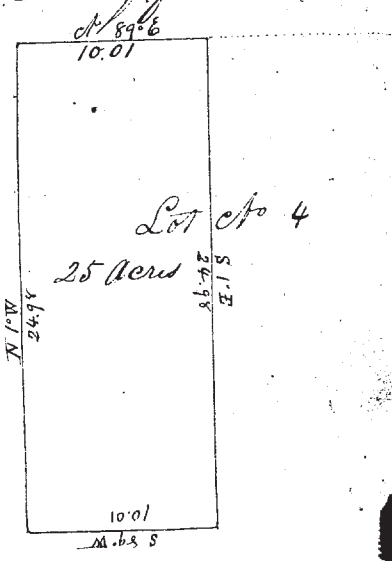


4 } Survey of Twenty five acres of Land lying in  
 in the N.W. corner of Lot No 4 Tract 3 & T No 12 R 6  
 for Robert Burns Beginning at the N.W. corner  
 Bearings Maple 24 inch diameter at 19° W. 10 Chains S 6° E. 31  
 Thence at 89° E 10.01 chains Thence S 1° E 24.98 chains Thence  
 Thence S 89° W 10.01 chains Thence at 1° W 24.98 chains to  
 the place of beginning containing Twenty five acres

Benjamin H. Fuller } Chainmen  
 Henry Hill } Sworn

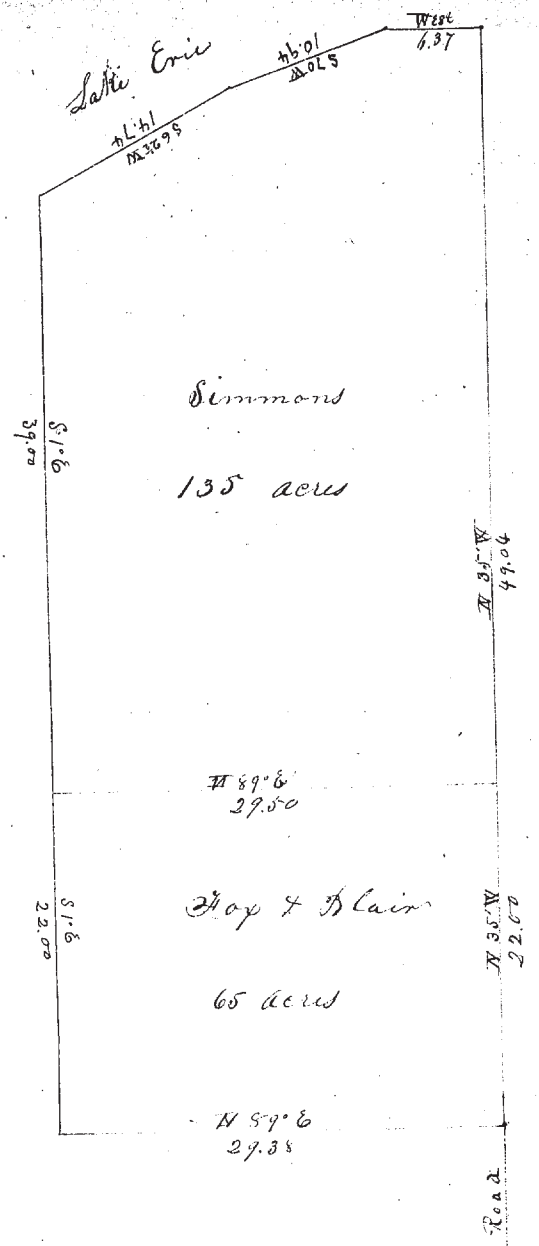
© Madison June 2<sup>nd</sup> 1840

I certify this a true Survey Jarvis.  
 S. Pike County Surveyor for Lake Co.



5 } Survey of Two Hundred acres of  
 Land for Messrs Fox, Blair, & Simmons  
 Situated on the Lake shore in the Ely tract or Tract  
 No 3 in the Township of Madison Beginning at a stake  
 on the Bank of the Lake bearing to a beech tree 12 S 1° E  
 86 Thence S 1° E 39.00 chains to the S.W. corner of Simmons  
 and Thence S 1° E 22.00 chains to the S.W. corner of the  
 lot also the S.W. corner of Fox's land. Thence at 89° E 29.38 chain  
 to the center of the road it also being the S.E. corner of Fox's  
 land Thence along the center of Road at 35° W 22.00 chains  
 the S.E. corner of Simmons land Thence at 35° W 49.04  
 chains to the Bank of Lake Thence West 6.37 chains along the  
 bank Thence S 70° W 10.94 chains Thence S 62° W 14.74 chains  
 to the place of beginning containing Two Hundred acres  
 of which Simmons has 135 acres from the N End lying on  
 Lake and Fox & Blair 65 acres on the South part

Shellogg } Chainmen  
 Harvey } Sworn A.B. See plat on the next page



I certify this a true Survey Jarvis. S. Pike  
 County Surveyor for Lake Co.

June 3<sup>rd</sup> 1840