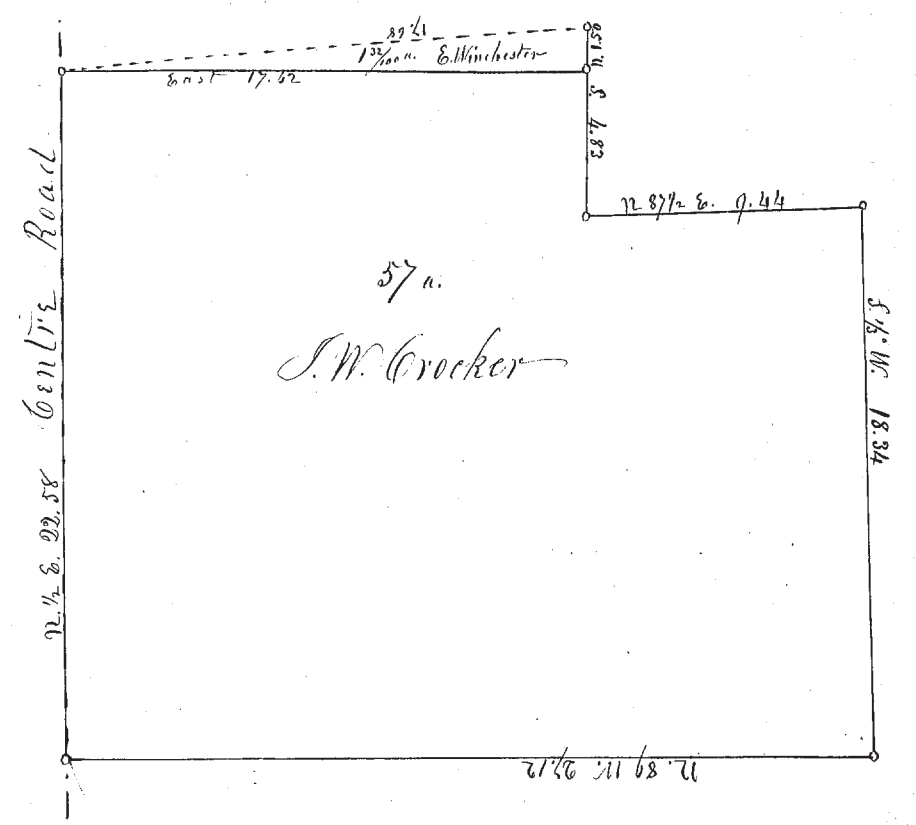


North west part of Lot No. 18 in Perry
 that part lying South of the River Road containing 30 ²/₃ acres
 sold by R. E. Allison to Edwin French -
 Surveyed June 1. 1855
 M. J. Harvey Surveyor Lake Co.

No. 291



Survey of Part of Tract No. 2 in the North part of Madison
 (Kentland Lands) Surveyed for S. W. Crocker -
 June 13. 1855 M. J. Harvey Surveyor Lake Co.