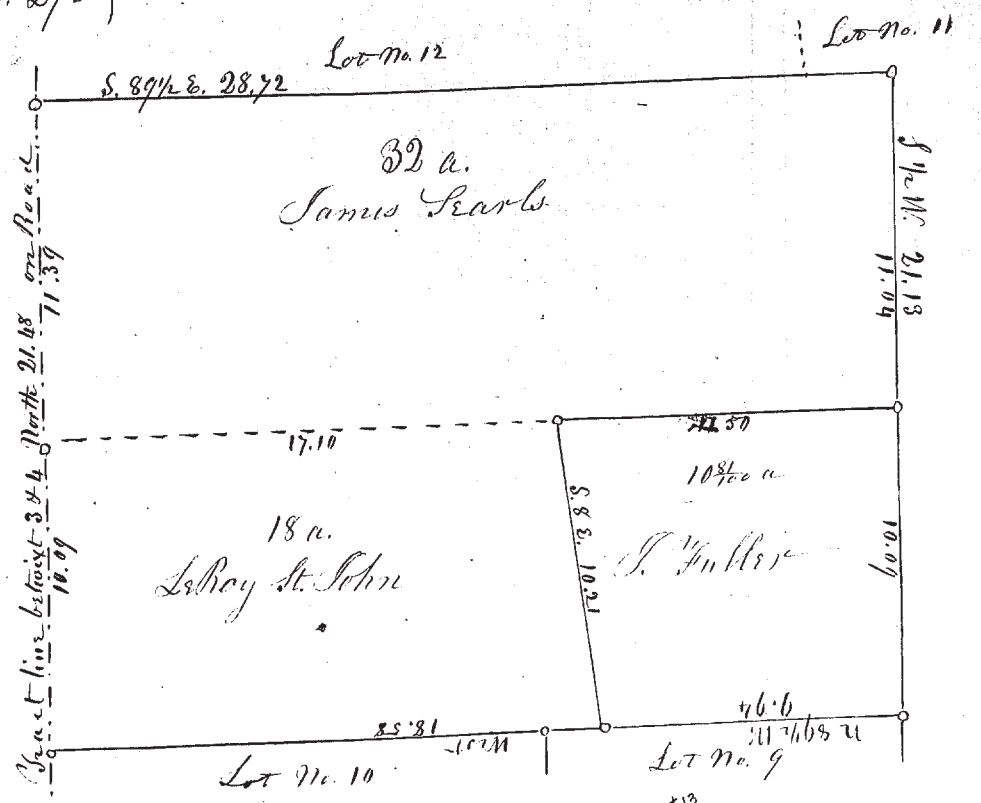
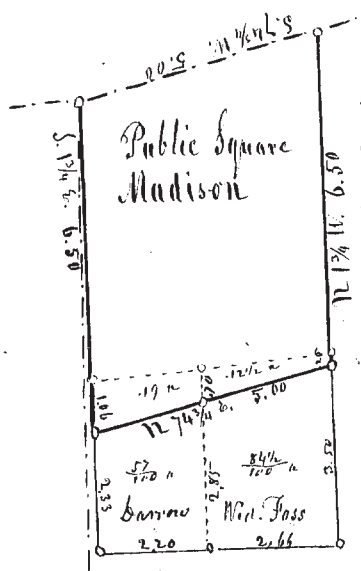


No. 275



Survey of the W. middle part of tract No. 2 in the North part of Madison for S. Fuller & others - Sep. 11, 1854 - M. S. Harvey, Surveyor Lake Co.

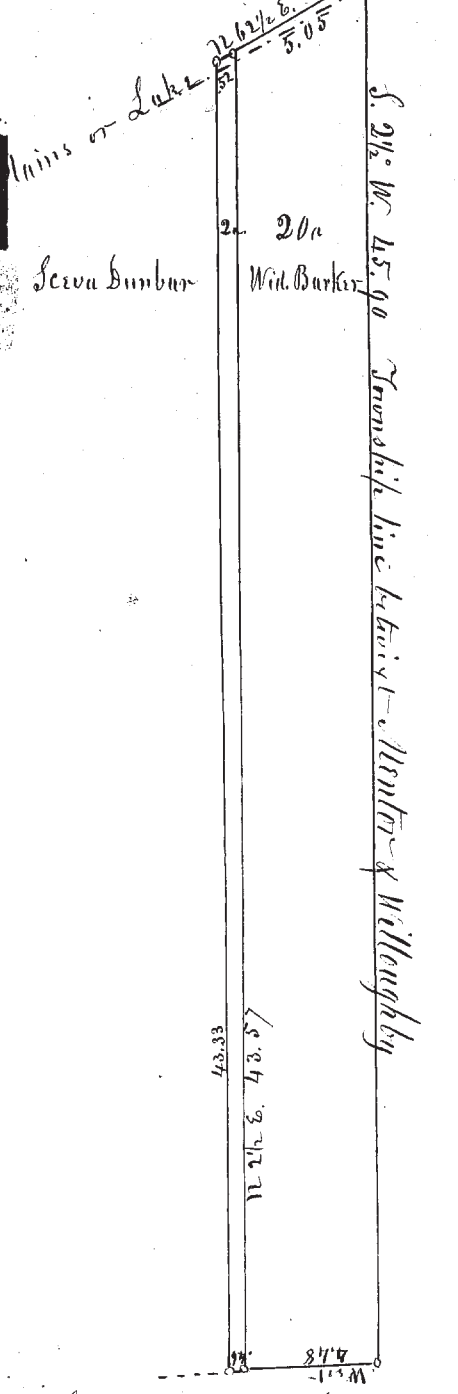
No. 276



Survey of the Public Square, Madison, Beginning in the center of the South Bridge Road about 2 1/2 feet south of the Pump, from which point the Northeast corner of the Wheeler House bears S. 41° W. distant 60 links, - thence S. 1 1/4 E. 6 Chains 50 links, - thence N. 7 1/4 E. 5 Chains - thence N. 1 1/4 W. 6 Chains 50 links - thence S. 7 1/4 W. 5 Chains to the place of beginning -

Oct. 21, 1854
M. S. Harvey, Surveyor Lake Co.

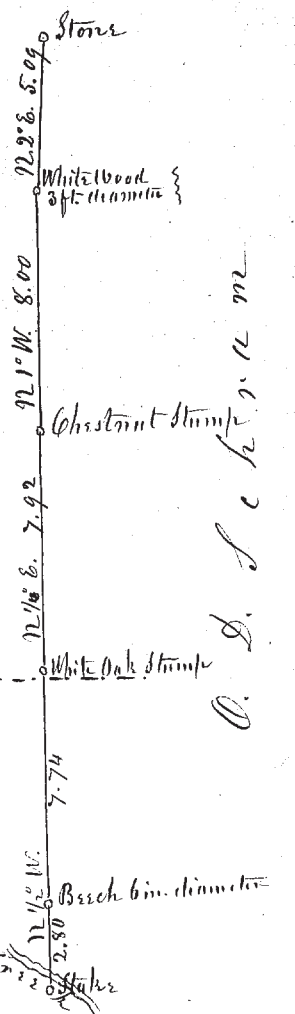
No. 277



Survey of part of Lot No. 5 N.E. part of Willoughby town Oct. 1854

M. S. Harvey, Surveyor Lake Co.

No. 278



Survey of the line between the lands of John Babcock and O. D. Schram in tract No. 6 in Willoughby -

Beginning at the southern end of said line at a stake placed about one Rod up the bank on the south side of a small creek - thence running N. 1/2 W. 2.80 lks. to a Birch tree about 6 inches in diameter marked as a sight - thence same course N. 1/2 W. 7.74 lks. to a White Oak stump near the North line of the Road, said to have been a sight tree - thence N. 1/2 E. 7.92 lks. to a Chestnut stump said to have been a sight tree - thence N. 1° W. 8.00 lks. to a White Wood about 3 feet in diameter marked as a sight tree - thence N. 2° E. 5.09 lks. to a Stone set in the ground at the North end of said line. - The parties being present, agreed to establish the above line as the true and legal line between them. -

Nov. 6, 1854
M. S. Harvey, Surveyor Lake Co.