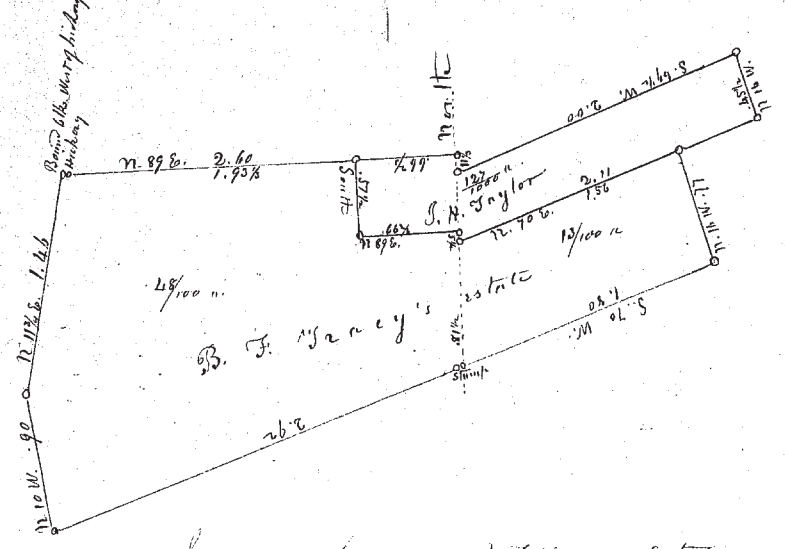


No. 249

May 11<sup>th</sup> 1853 - Set a post at the Northeast corner of  
 S. W. Heath's land, in Lot No. 97 in Tract No. in Kintland on the  
 testimony of L. Edson, E. W. Heath, W. Heath, S. Heath, J. Edson, J. C. Black,  
 D. L. Sperry, D. L. Sperry Jr., L. Sperry, J. Sperry, M. Burlington, H. Luce,  
 V. Barnes and L. Barnes, from which post a Black tree 20 inches  
 in diameter bears N. 77 $\frac{1}{2}$ ° W distant 38 $\frac{1}{2}$  links, and a hard Maple  
 10 inches in diameter bears N. 38 $\frac{1}{2}$ ° E. distant 87 links. Persons present  
 at setting said post, S. W. Heath, A. Williams, Lemuel Holmes,  
 D. L. Sperry, D. L. Sperry Jr., Lewis R. Sperry and Alfred Heath. Then  
 run the line betwixt said S. W. Heath and Albert Williams  
 S. 0° 55' E. 8 Chs. 36 lks. to center of the road at said Williams' corner,  
 thence betwixt said S. W. Heath and Lemuel Holmes S. 0° 55' E.  
 4 Chs. 75 lks. to an angle, thence S. 3° E. 4 Chs. 85 lks. to an angle, thence  
 S. 1 $\frac{1}{2}$ ° E. 7 Chs. 65 lks. to S. W. Heath's Southeast corner.

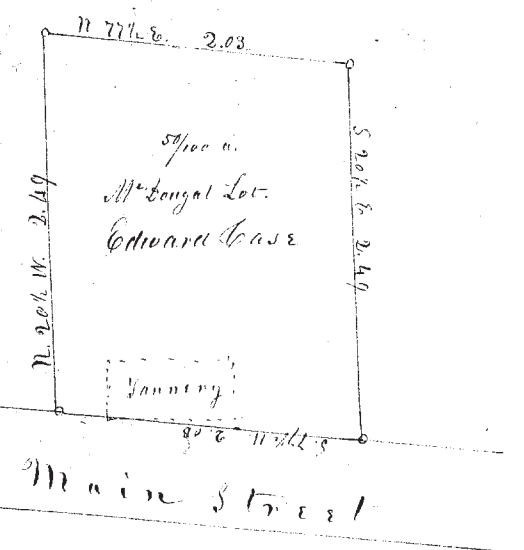
Afterwards, and on the same day, by the agreement of said S. W.  
 Heath and Lemuel Holmes the line was run straight from the  
 center of the road to said S. W. Heath's S. E. corner as follows -  
 Beginning in the center of the road one link east of the point  
 mentioned in the above line, from which place of beginning  
 the dwelling house of Lemuel Holmes (N. W. corner) bears S. 23 $\frac{1}{2}$ ° E.  
 1 Ch. 90 lks. distant, and the House on the opposite side of the road  
 owned by A. Williams (S. W. corner) bears N. 16° E. 1 Ch. 26 lks. distant  
 thence S. 1 $\frac{1}{2}$ ° E. 17 Chs. 25 lks. to said S. W. Heath's S. E. corner.  
 The Southeast corner of said S. W. Heath's land is a stone  
 set by me in the month of Nov. 1852 -  
 M. S. Harvey Surveyor Lake Co.

No. 250



Survey of lands of J. H. Tracy's estate and A. H. Taylor  
 in Painesville - June 13, 1853.  
 M. S. Harvey Surveyor Lake Co.

No. 251



Survey of the M. Congal Lot in Painesville for E. Case  
 June 13, 1853  
 M. S. Harvey Surveyor Lake Co.