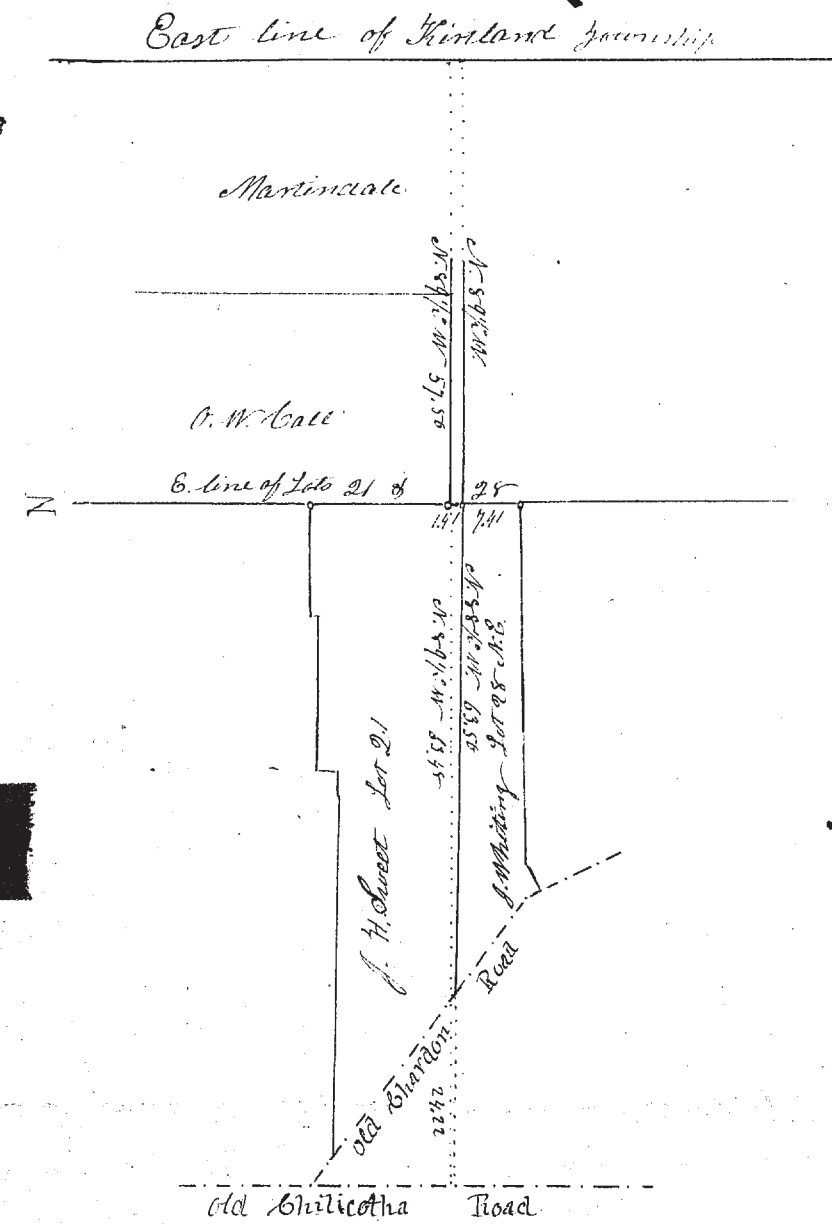


No. 17 The following survey and protraction was made for the purpose of settling and fixing the boundary line between Lots No. 21 and the E. C. part of Lot No. 28 in tract No. 2 in Township No. 9 in the 9th Range - made in conformity to law and agreeably to the testimony contained in the following depositions - viz - Commence at a stake standing at the N. E. corner of Lot No. 28 and E. C. corner of Lot No. 21 being seven chains and forty one links N. from a hemlock stump which stump is the acknowledged E. C. corner of Lot No. 28. Hence run N. 88 1/2° W. sixty three chains fifty links, to a point in the E. line of the old Chardon road so called, and from which the S. W. corner of John H. Sweet's dwelling house bears N. 82 1/2° E. six chains and one link distant - At which point I caused to be placed a stone 1 1/2 feet in diameter, and 2 1/2 feet in length and set 1 1/2 feet deep in the ground, with some pieces of brick underneath - which stone was placed as the true N. W. corner of that part of Lot No. 28 aforesaid owned by John Whiting, and the S. W. corner of that part of Lot No. 21 owned by John H. Sweet. Persons present at placing the said corner, were, Obed W. Ball and John Parks as chairmen - Amos Daniels, Lyman Pecked, Nathrup Sweet, Jehial Matthee, David Wolbrook, Nathaniel Davenport, Erastus Martin, Abiel Pierson, Joshua Lamoreaux, Jonathan Harrington -

The black line in the following plot represents the line as established according to testimony received between Lots No. 21 & 28 - The dotted line represents a continuation of the E. line of Martindale and Obed W. Ball's Lots - The distance between the said black line, and dotted line, when they intersect the East line of Lots No. 21 & 28 is one chain and forty one links - and where they cross the old Chardon road twenty links -



I certify the foregoing survey and plot as correct as I verily believe -
 Surveyed by the request of John Whiting
 Highland 14th day of October 1844
 C. Huntington Surveyor of Lots