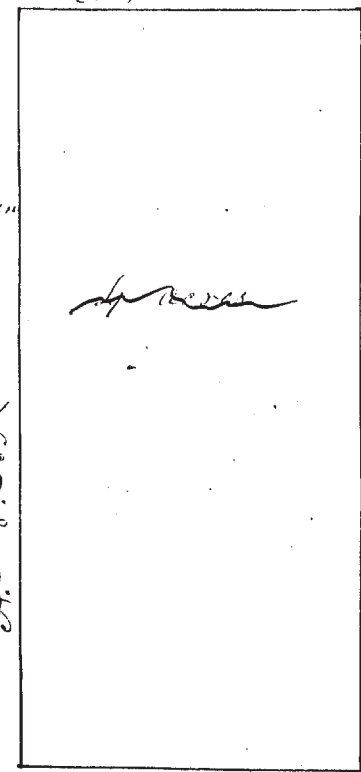


No 14 } Survey of 4 acres of land off the N.W. part  
 of a lot of six acres in great lot No. 4 in tract  
 No. 1, in Township No. 9 in the 9 Range of Townships, Twp  
 in the name of Edmund Durfee, and sold by J. Corning  
 Treasurer of Lake Co. to William Harrison on the 28 day of  
 December A.D. 1840. Vid. Commence at a stake standing  
 in the E. line of Lot No. 4 - 11 chains and 12 links E. from  
 the S. E. corner of said Lot No. 4 being also at the S. E. cor-  
 ner of a lot of five acres owned by Charles Whiting in sd.  
 Lot No. 4 - Thence run E. 89 3/4 N. 4 chains 50 links to a stake  
 standing in the N.W. corner of said six acre lot, thence S.  
 1/4 E. 8 chains 89 links to a stake, thence N. 89 3/4 E. 4 chains  
 50 links to a stake standing in the E. line of said Lot No. 4,  
 thence N. 1/4 N. along the E. line of sd. Lot No. 4, 8 chains 89 links  
 to the place of beginning, containing 4 acres of land.  
 Surveyed at the request of Laurence H. Frank,  
 June 18-1844



Darius Martindale  
 Solomon Walden & Blainman

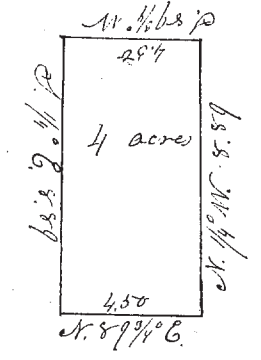
June 18-1844

C. Huntington Surveyor Lake Co.

The above is transferred to the next page on account  
 of not being definite enough in describing the bounds.  
 C. Huntington

No 14 } Survey of 4 acres of land off the N.W. part  
 of a lot of six acres in great lot No. 4 in tract  
 No. 1, in Township No. 9 in the 9 Range of Townships, Twp  
 in the name of Edmund Durfee, and sold by J. Corning  
 Treasurer of Lake Co. to William Harrison on the 28 day of  
 December A.D. 1840. Vid. Commence at a stake standing  
 in the E. line of Lot No. 4 - 11 chains and 12 links E. from  
 the S. E. corner of said Lot No. 4 being also at the S. E. cor-  
 ner of a lot of five acres owned by Charles Whiting in sd.  
 Lot No. 4 - Thence run E. 89 3/4 N. 4 chains 50 links to a stake  
 standing in the N.W. corner of said six acre lot, thence S.  
 1/4 E. 8 chains 89 links to a stake, thence N. 89 3/4 E. 4 chains  
 50 links to a stake standing in the E. line of said Lot No. 4,  
 thence N. 1/4 N. along the E. line of sd. Lot No. 4, 8 chains 89 links  
 to the place of beginning, containing 4 acres of land.  
 Surveyed at the request of Laurence H. Frank,  
 June 18-1844

Darius Martindale  
 Solomon Walden & Blainman



C. Huntington Surveyor Lake Co.