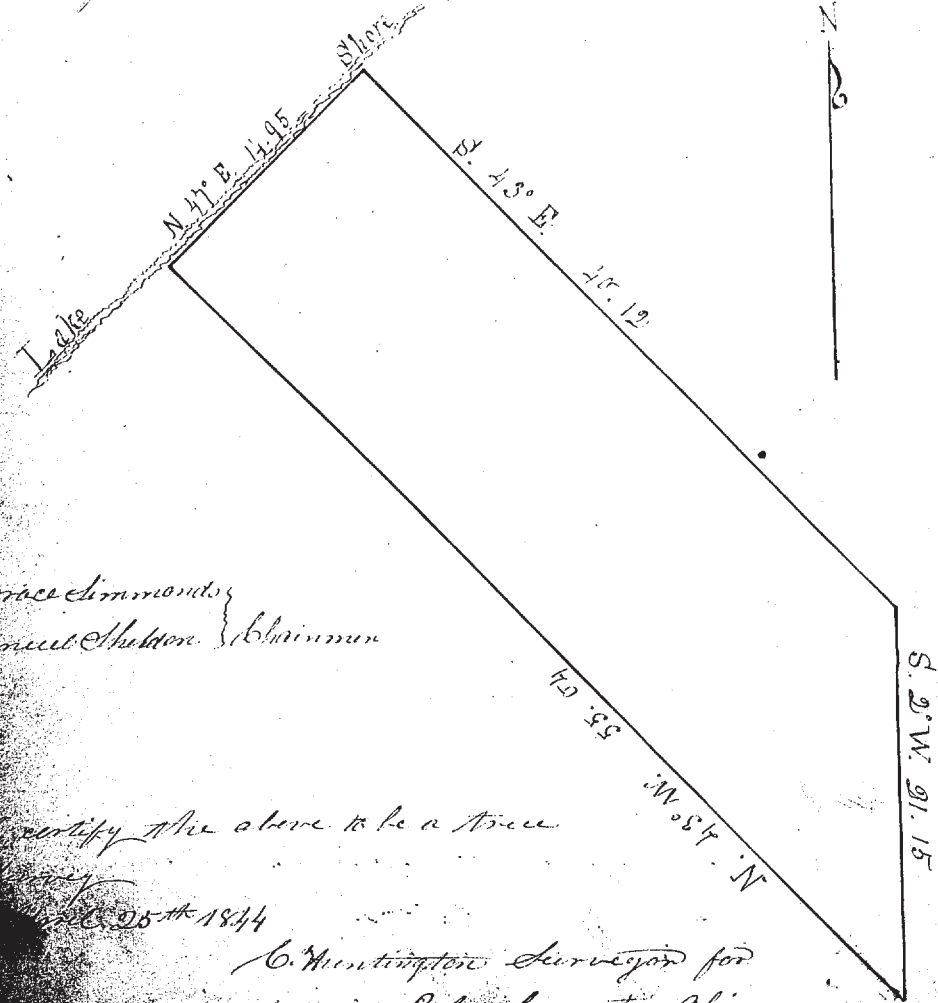


No. 10

Survey of the N.E. part of Lot No. 19, Gore Range 10 forfeited to the State of Ohio for the non-payment of taxes, and sold to John Withwood and John Goring by the Auditor of Lake County Ohio on the 11th day of December 1843, changed in the name of Nathan Christy - N.E. corner at the N.E. corner of said Lot No. 19 on the shore of Lake Erie, thence run S. 43° E. 40 Chains 12 Links to a post on the S. line of said Lot. Thence S. 2° W. 21 Chains 13 Links to a post; thence N. 45° W. 35 Chains 04 Links to the Lake shore; thence N. 47° E. along the beach of the Lake at high water mark, 14 Chains 95 Links to the place of beginning. Containing twenty one and ten hundredths acres of land. Magnetic needle varying 2° E. of original line.



Horace Dimmock  
Amos Shotton } Surveyors

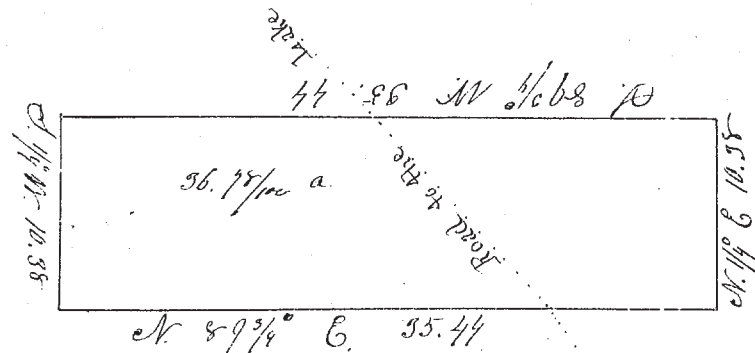
I certify the above to be a true

Dec 25th 1844

C. Huntington Surveyor for  
Lake County Ohio

No. 11

Survey of the S. part of Lot No. 95, Township No. 11, Perry, in the 7 Range, according to the direction of Charles Burr, Jasper Brewster and Benjamin Muller, a committee appointed by the Court to a part to Frederick Hinoman and others, their interest in said Lot - N.E. corner at the S.W. corner of said Lot No. 95, thence N. 89 3/4° E. on the S. line of the Lot 95 44 Links to a post standing in the S.E. corner of the Lot; thence N. 44° E. 10 Chains 38 Links to a post; thence S. 89 3/4° W. 35 Chains 44 Links to a chestnut stump, two feet in diameter standing in the W. line of said Lot; thence S. 44° W. 10 Chains 38 Links to the place of beginning and containing 36.78/100 acres of land.



Benjamin Muller }  
Jasper Brewster } Chamberlains

I certify the above to be a true survey

C. Huntington Co. Surveyor  
Lake Co. Ohio

The above partition was set aside by the court and another committee appointed viz John Hubbard, Cunningham and Wm. W. Branch who made partition for this is also set aside by the court and another committee appointed and partition made June 11-1845 see No. 12