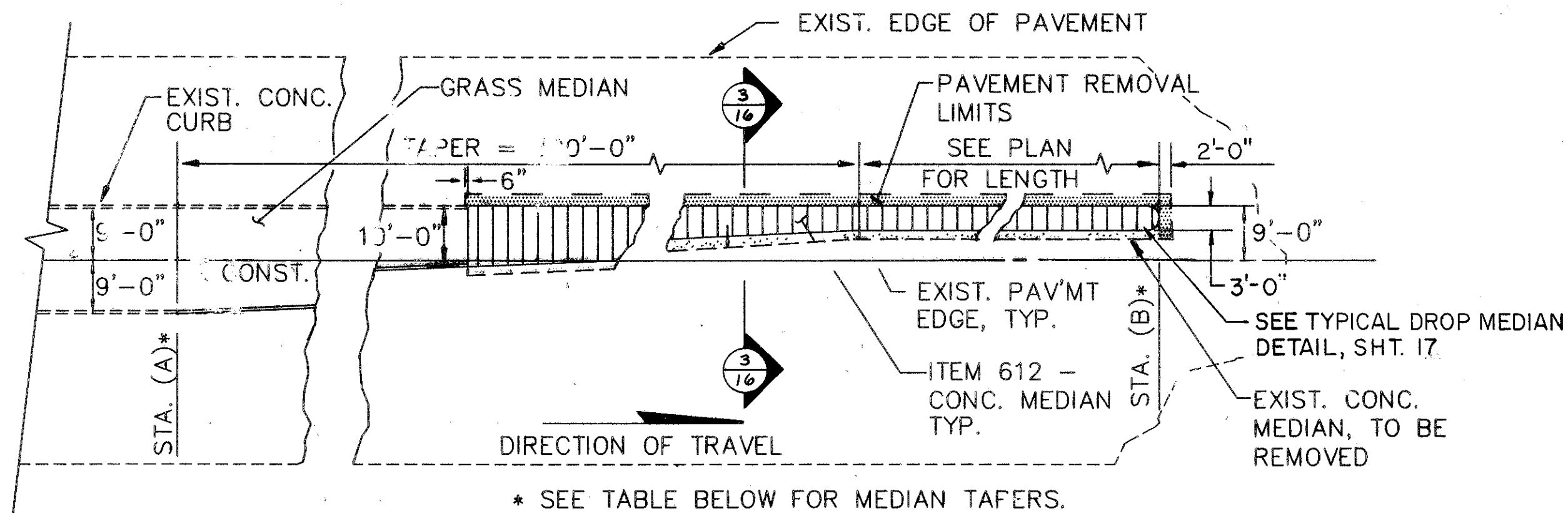
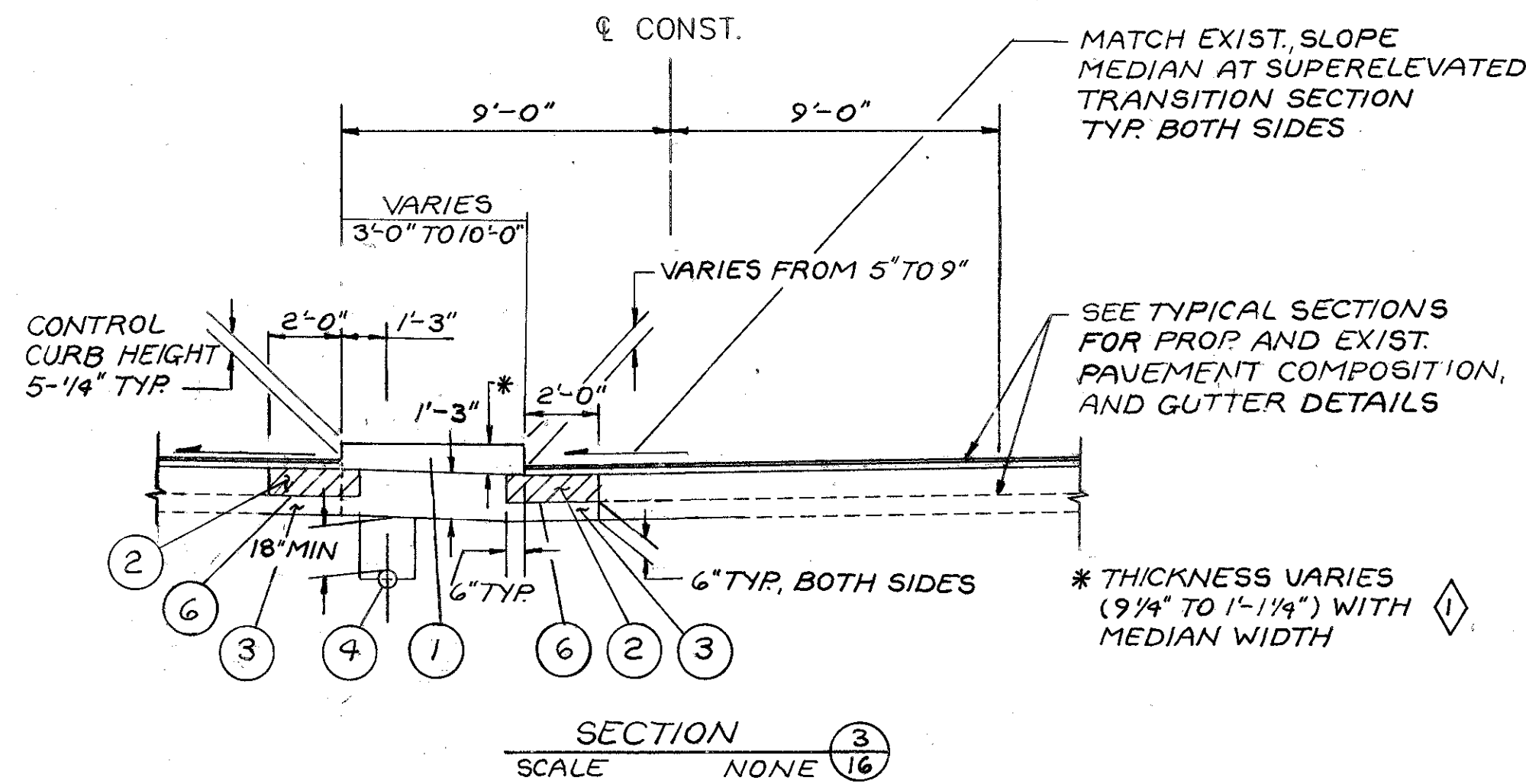


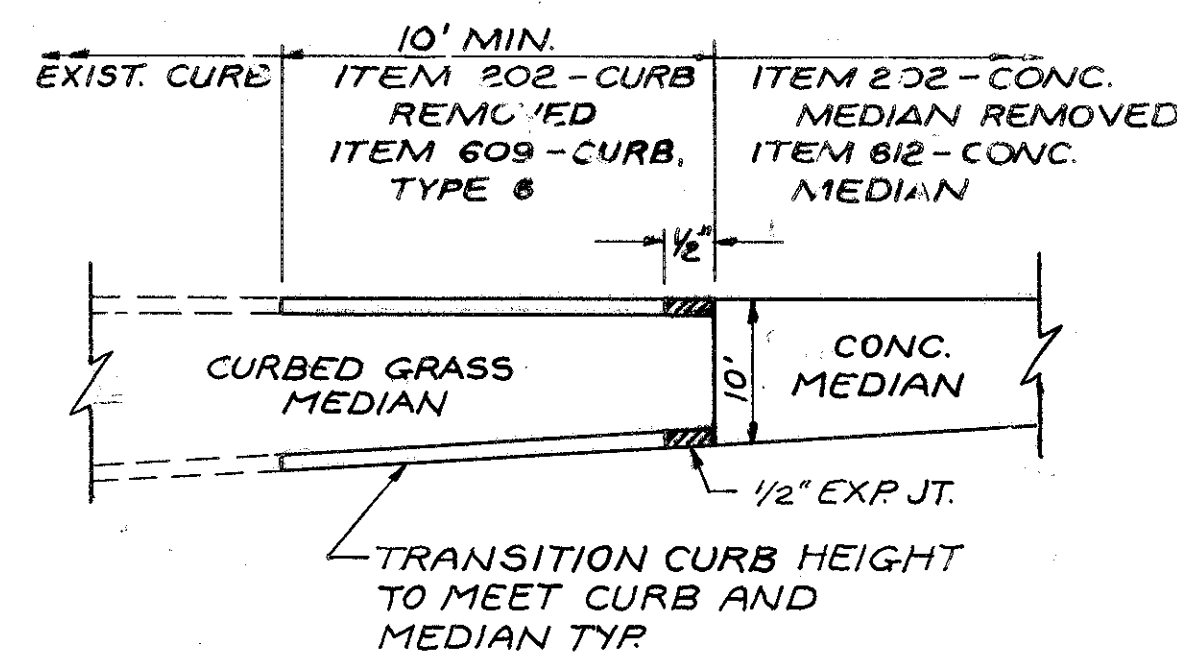
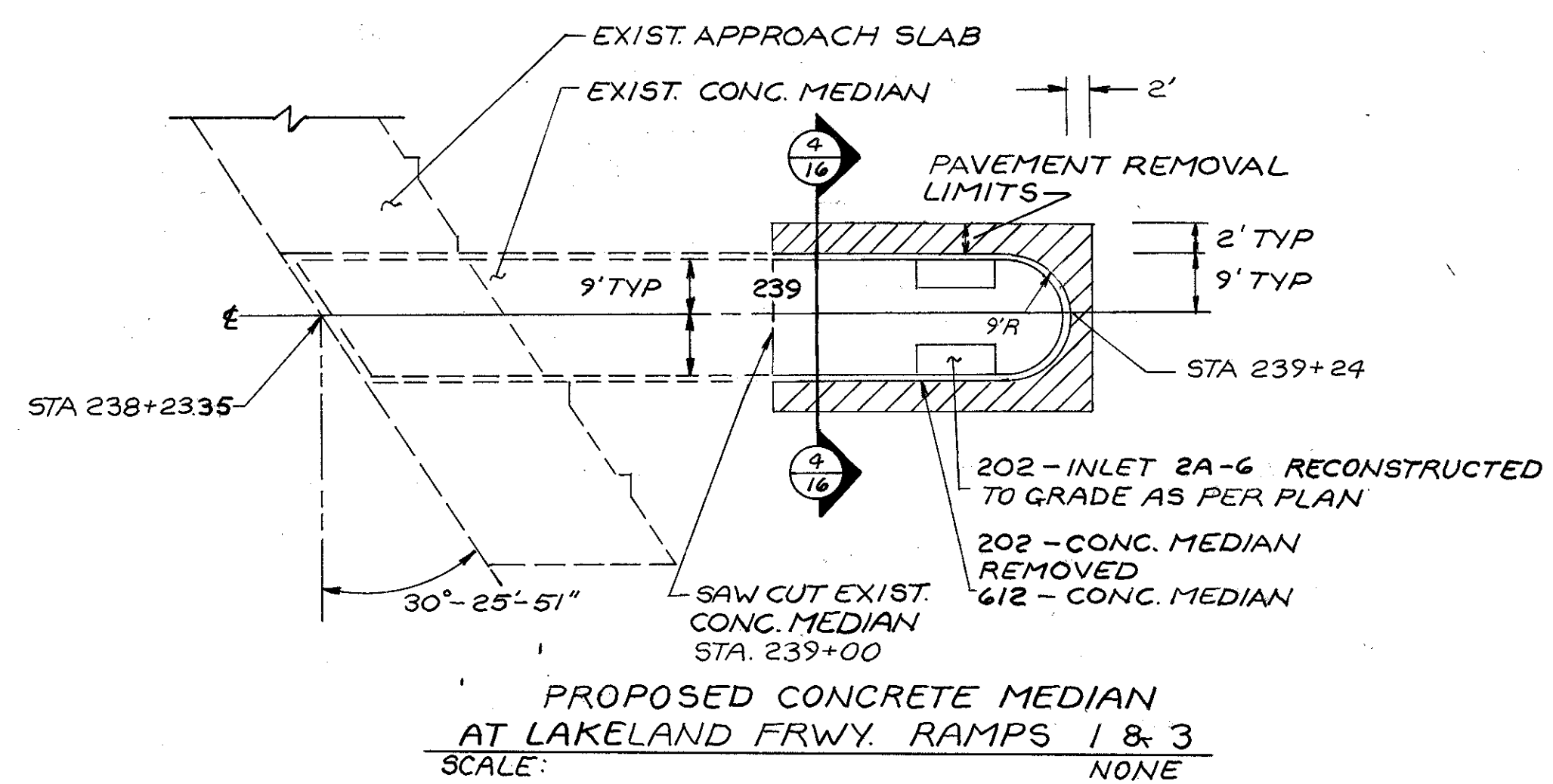
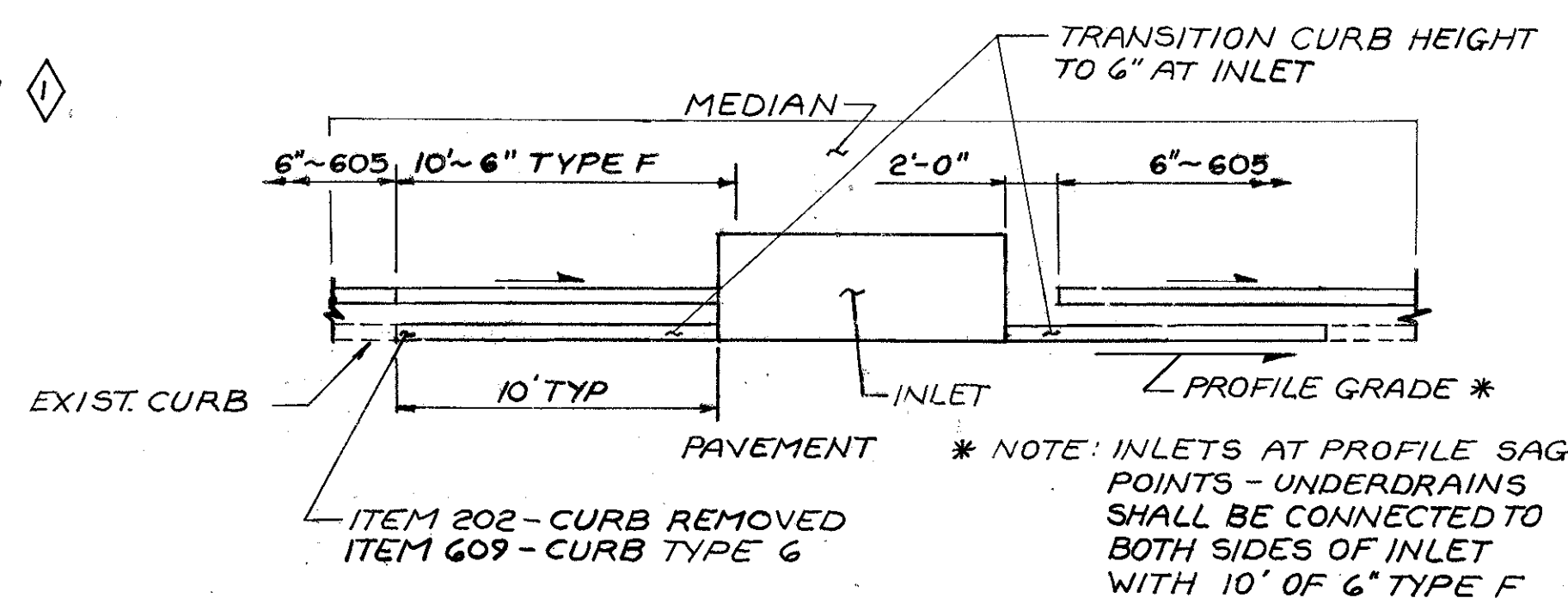
LEGEND

- ① ITEM 612 - CONCRETE MEDIAN
- ② ITEM 301 - 9" BITUMINOUS AGGREGATE BASE, AC-20
- ③ ITEM 310 - SUBBASE, TYPE I, GRADING A, AS PER PLAN
- ④ ITEM 605 - SHALLOW PIPE UNDERDRAINS
- ⑤ ITEM 609 - CURB, TYPE 6
- ⑥ ITEM 408 - BITUMINOUS PRIME COAT



INTERSECTING STREET SOUTHBOUND  
EUCLID AVE. STA. 202+16 TO STA. 206+15

PROPOSED CONCRETE MEDIAN AND LEFT TURN LANE AT EUCLID AVE.



ITEM DESCRIPTION	SUMMARY OF QUANTITIES					
	203 EXCAVATION NOT INCLUDING EMBANKMENT CONSTRUCTION C.Y.	301 BITUMINOUS AGGREGATE BASE - AC 20 C.Y.	310 SUB BASE TYPE I, GRADING A AS PER PLAN C.Y.	408 BITUMINOUS PRIME COAT GALS	609 CURB TYPE 6 L.F.	612 CONCRETE MEDIAN S.Y.
EUCLID AVE	107	38	69	61	20	134
CURTIS BLVD	487	232	255	371	382	332
MEDIANS AT LAKELAND F.W.	42	11	31	17	—	69
VINE STREET	696	282	414	451	384	673
STEVENS BLVD.	628	310	318	497	382	436
GLEN DRIVE	132	34	98	55	40	207
BEACH PARK DRIVE	132	34	98	55	40	207
ROBERTS RD.	132	34	98	55	40	207
TOTALS	2356	975	1381	1562	1288	2265
WILLOUGHBY	107	38	69	61	20	134
EASTLAKE	2249	937	1312	1501	1268	2131

NOTE: CURB AND CONCRETE REMOVAL QUANTITIES ARE SHOWN ON PLAN SHEETS.

◆ CONCRETE MEDIAN THICKNESS AT EACH EDGE IS EQUIVALENT TO SUM OF CURB HEIGHT AND PAVEMENT THICKNESS.