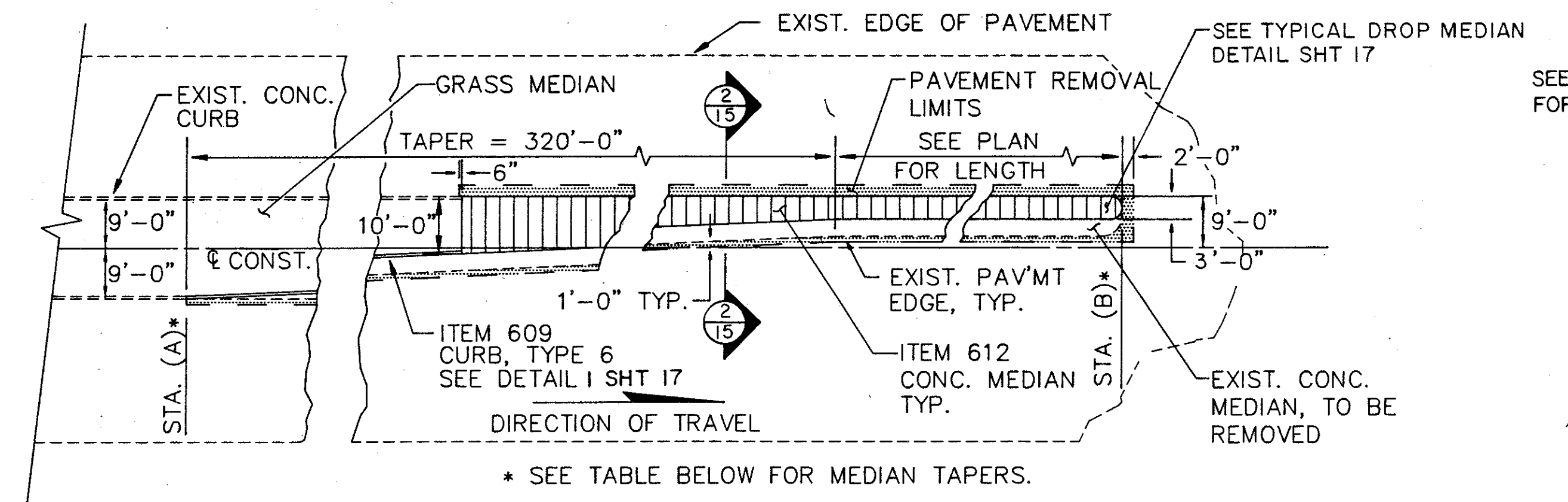
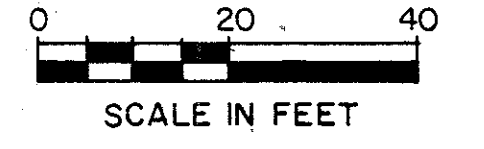


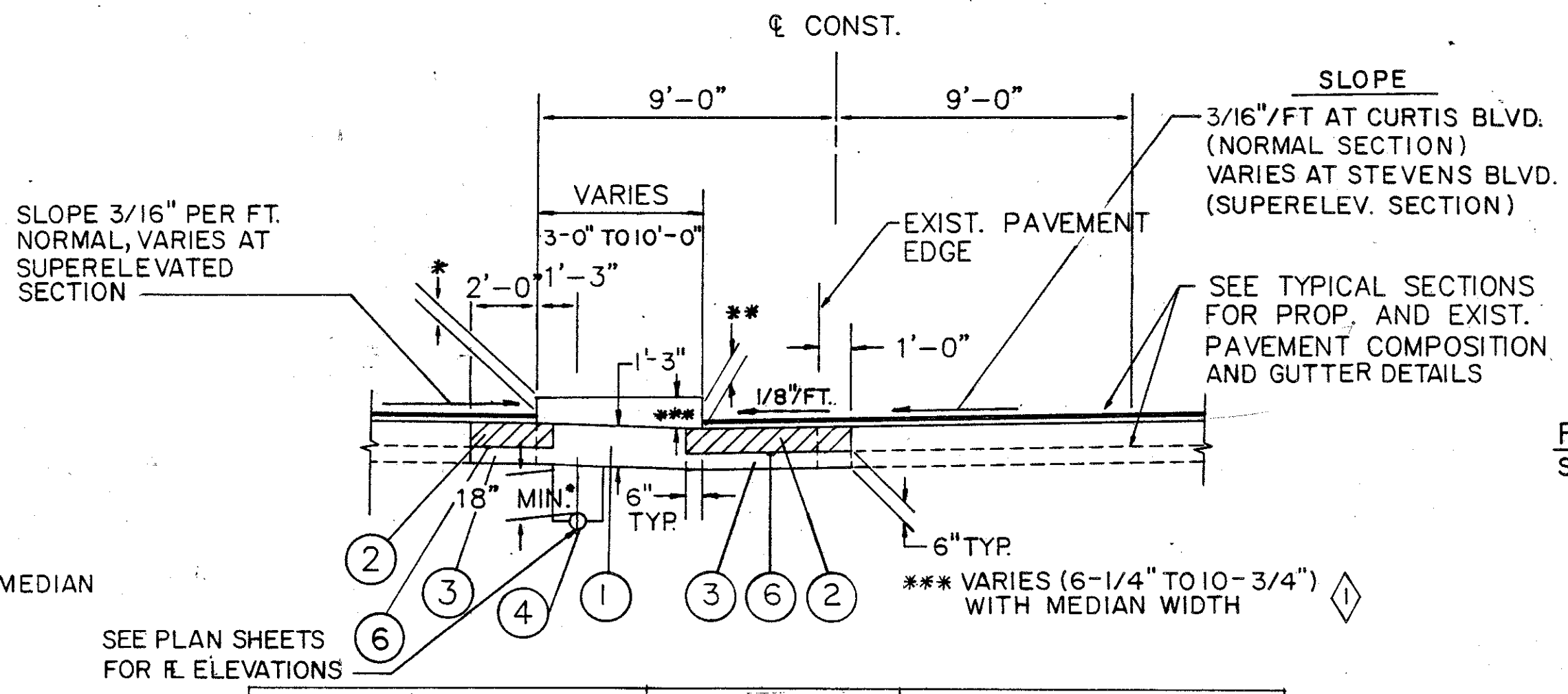
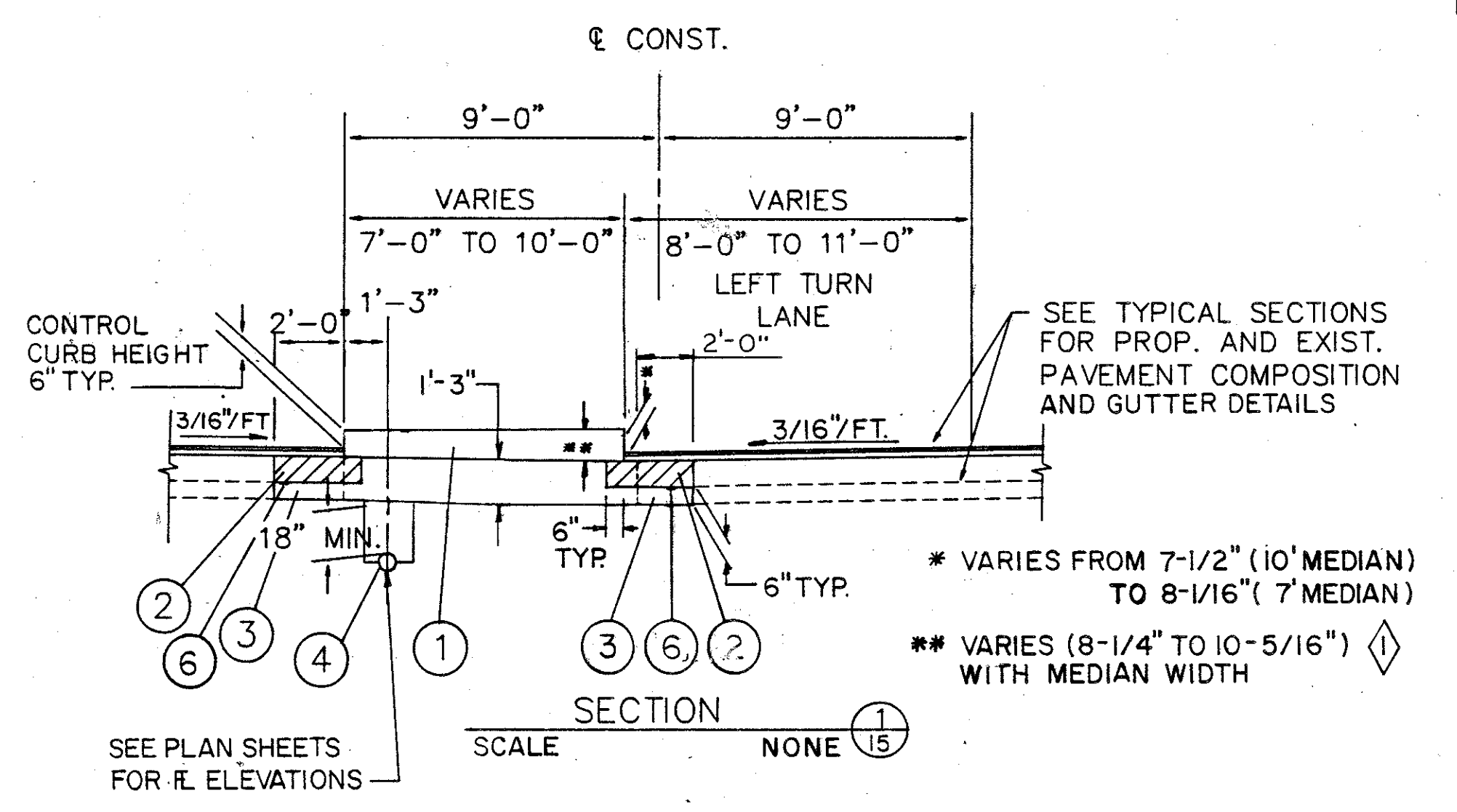
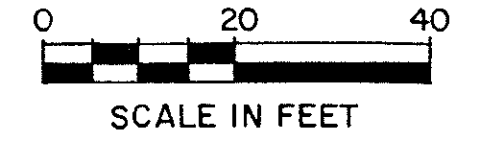
INTERSECTING STREET	NORTHBOUND STA. (A) TO STA. (B)	SOUTHBOUND STA. (B) TO STA. (A)
** VINE STREET	STA. 261+51 TO STA. 265+69	STA. 266+62 TO STA. 270+80
GLEN DRIVE	STA. 307+66 TO STA. 310+63	STA. 311+55 TO STA. 314+55
BEACH PARK	STA. 314+55 TO STA. 317+69	STA. 318+61 TO STA. 321+61
ROBERTS ROAD	STA. 323+48 TO STA. 326+48	STA. 327+41 TO STA. 330+41

PROPOSED CONCRETE MEDIAN AT VINE STREET, GLEN DRIVE, BEACH PARK AND ROBERTS ROAD.

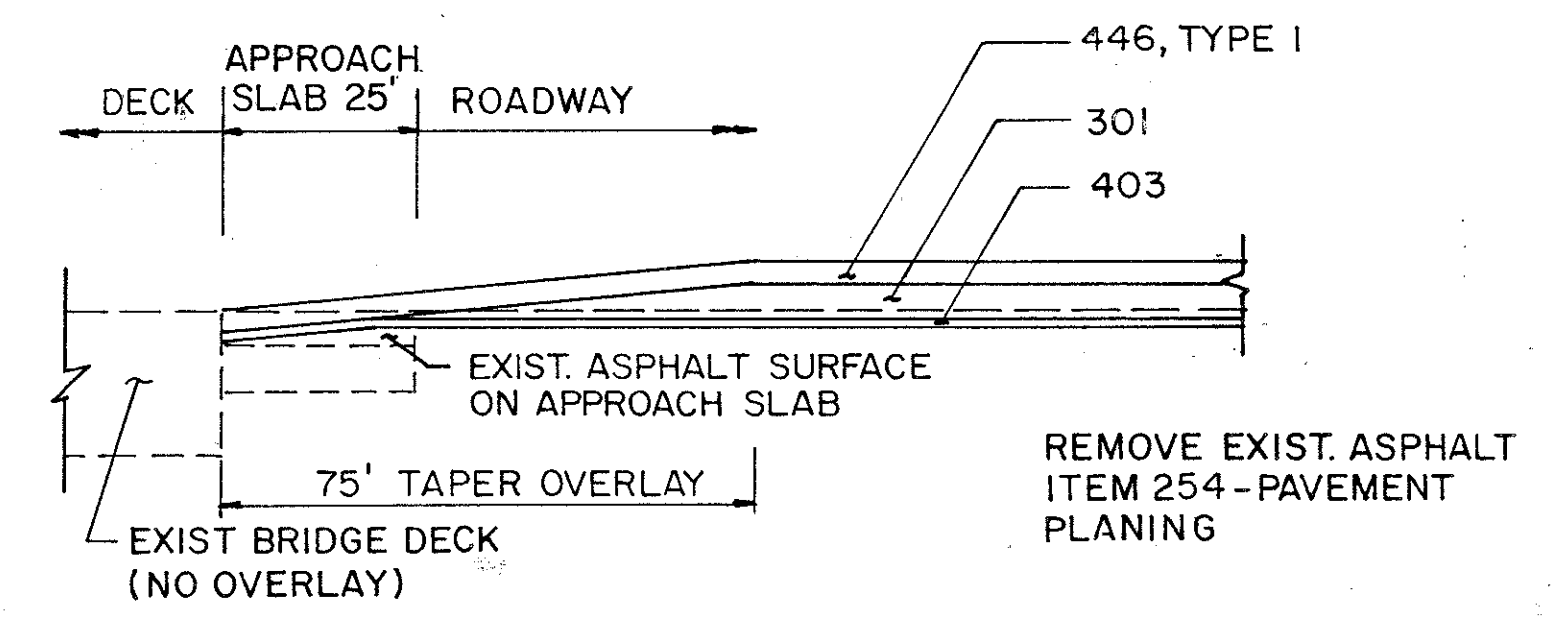


INTERSECTING STREET	NORTHBOUND STA. (A) TO STA. (B)	SOUTHBOUND STA. (B) TO STA. (A)
CURTIS BLVD.	STA. 245 +98 TO STA. 251+18	STA. 252+18 TO STA. 256+88
STEVENS BLVD.	STA. 282 +64 TO STA. 289+14	STA. 290+06 TO STA. 294+76

PROPOSED CONCRETE MEDIAN AND LEFT TURN LANE AT CURTIS BLVD. AND STEVENS BLVD.



Station	* Control Curb Height	** (Varies Due to Median Width)
247+69 to 251+18	6"	7" to 8-1/2"
252+18 to 255+17	6"	7" to 8-1/2"
284+35 to 289+10	6"	7" to 8-1/4"
290+06 to 291+56	4"	6-3/4" to 8-1/2"
291+56 to 292+00	4" to 6" (transition)	7-3/4" to 8-1/2"
292+00 to 293+05	6"	6-3/4" to 8"

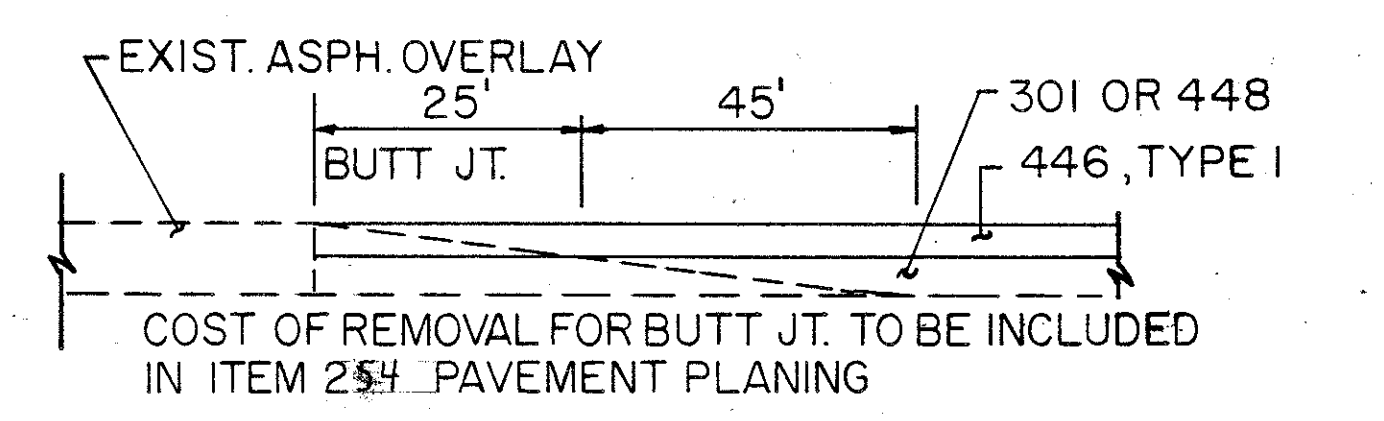


FEATHER DETAIL ADJACENT TO EXISTING STRUCTURE
SCALE NONE

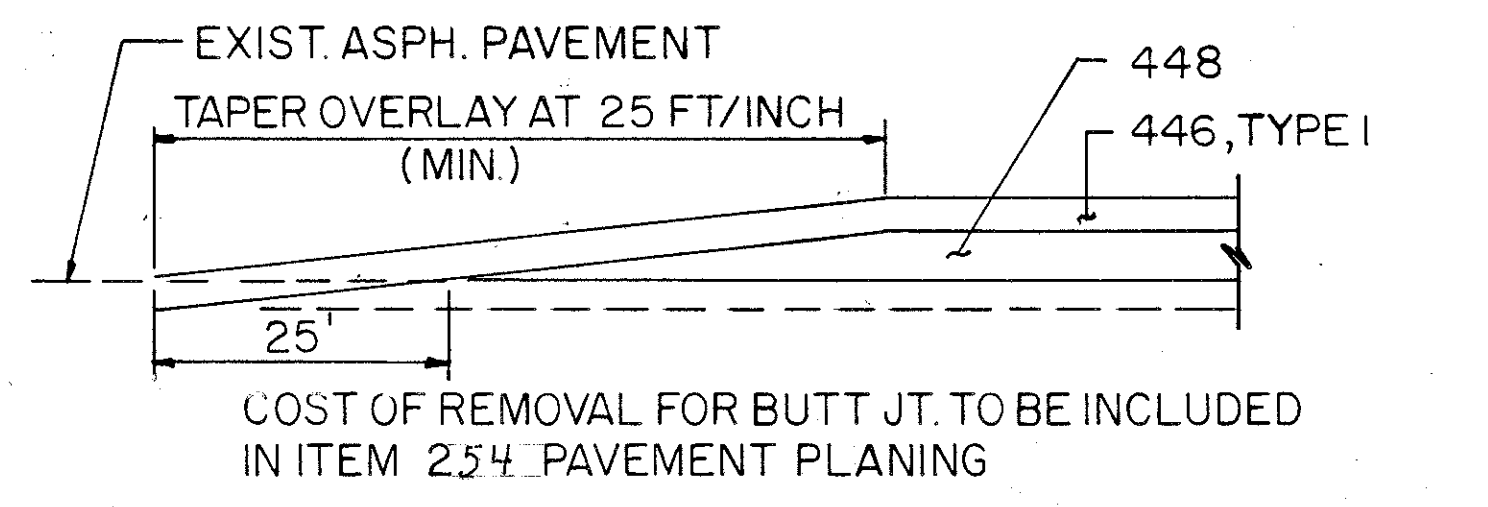
CONCRETE MEDIAN THICKNESS AT EACH EDGE IS EQUIVALENT TO SUM OF CURB HEIGHT AND PAVEMENT THICKNESS.

LEGEND

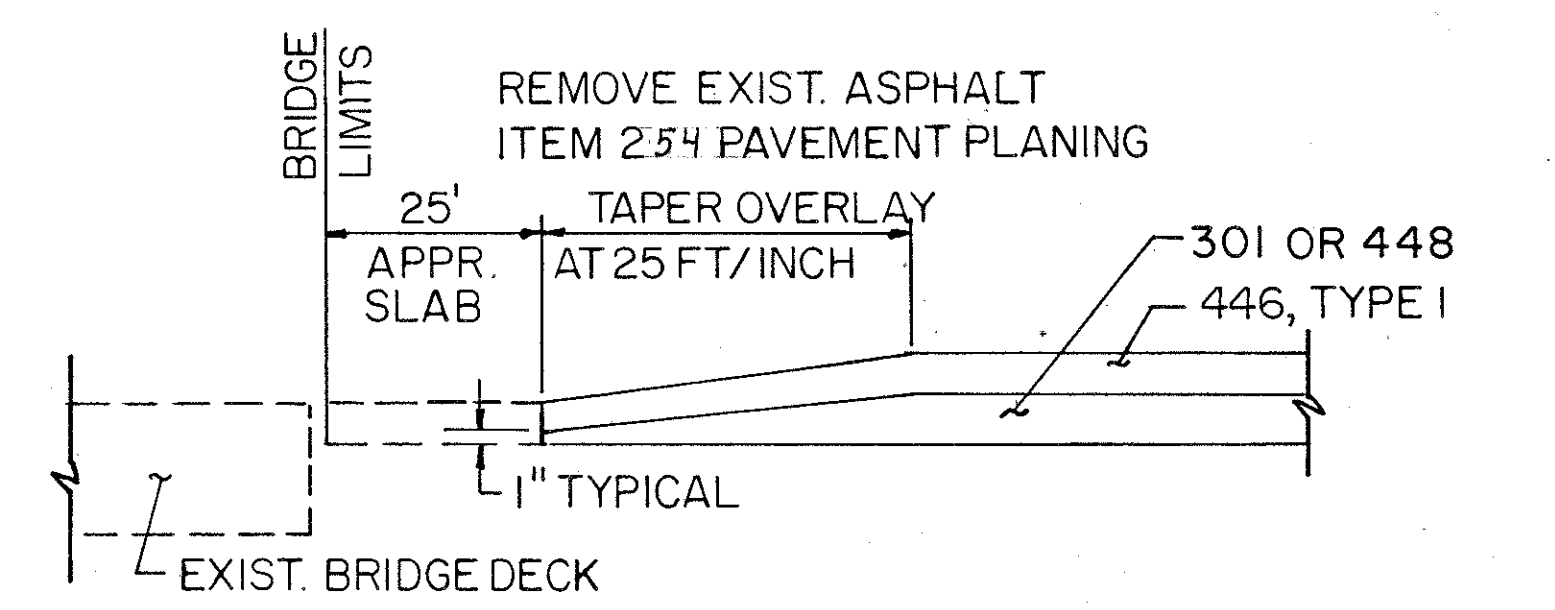
- ① ITEM 612 - CONCRETE MEDIAN
- ② ITEM 301 - 9" BITUMINOUS AGGREGATE BASE, AC-20
- ③ ITEM 310 - SUBBASE, TYPE I, GRADING, AS PER PLAN
- ④ ITEM 605 - SHALLOW PIPE UNDERDRAIN
- ⑤ ITEM 609 - CURB, TYPE 6
- ⑥ ITEM 408 - BITUMINOUS PRIME COAT



FEATHER DETAIL ADJACENT TO PREVIOUSLY OVERLAID ROADWAY
SCALE NONE



FEATHER DETAIL ADJACENT TO NON-OVERLAID ROADWAY
SCALE NONE



FEATHER DETAIL ADJACENT TO EXISTING APPROACH SLAB
SCALE NONE