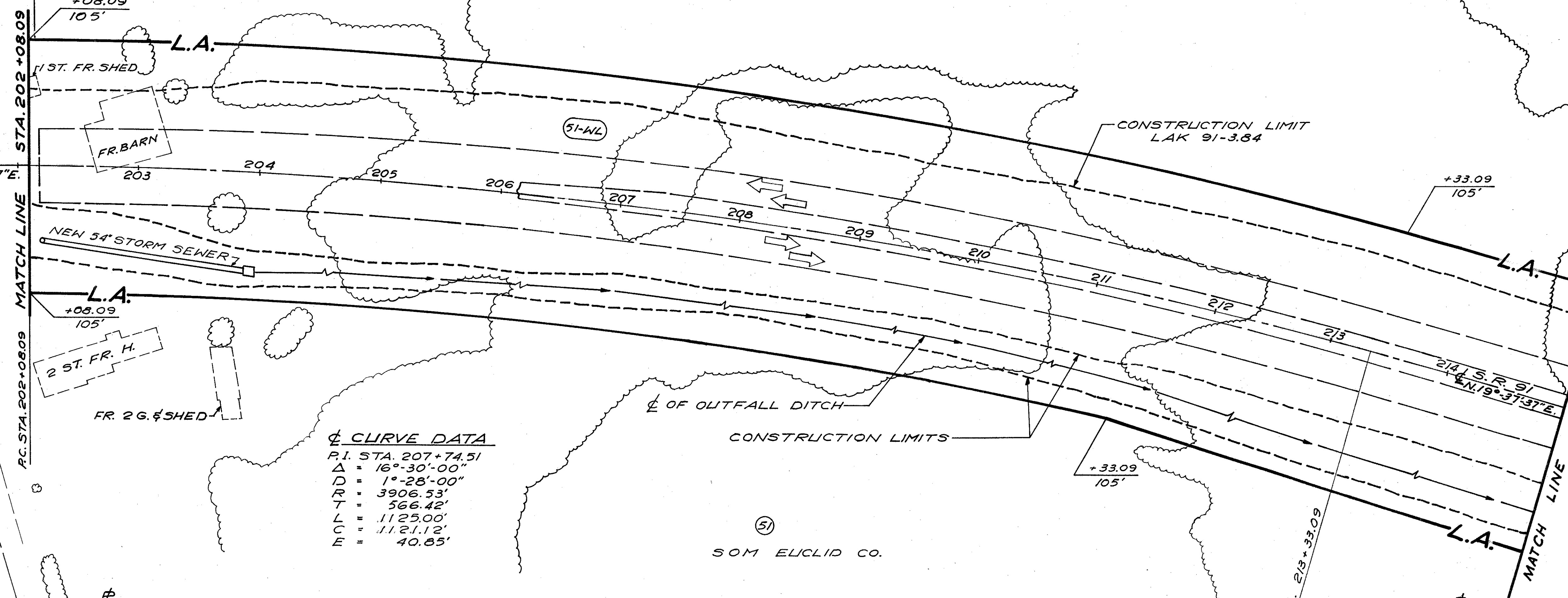


END PROJECT
LAK 91-2.72
STA. 202+16.09

BEGIN PROJECT
LAK 91-3.84
STA. 202+16.09

WILLOUGHBY TOWNSHIP R-10-W, T-9-N



S.R. 91
N. 3°-07'37"E

S.R. 91
N. 3°-07'37"E

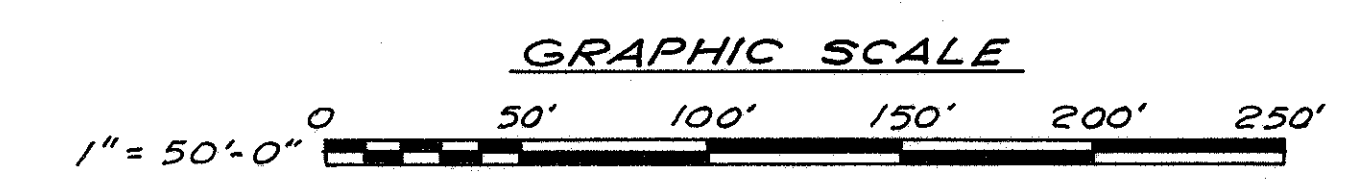
MATCH LINE STA. 202+08.09

MATCH LINE STA. 215+00

CLURVE DATA
 P.I. STA. 207+74.51
 $\Delta = 16^{\circ}-30'-00''$
 $D = 1^{\circ}-28'-00''$
 $R = 3906.53'$
 $T = 566.42'$
 $L = 1125.00'$
 $C = 1121.12'$
 $E = 40.85'$

BETTY de ZAHARA

(51)
SOM EUCLID CO.



NO.	DESCRIPTION	DATE
	REVISIONS	COMPLETION DATE 11-25-63

RIGHT OF WAY STA. 202+08.09 TO STA. 215+00