

# TYPICAL SECTION

## ASPHALTIC CONCRETE PAVEMENT

T-35

CONSTRUCTION TYPE CODE 6203

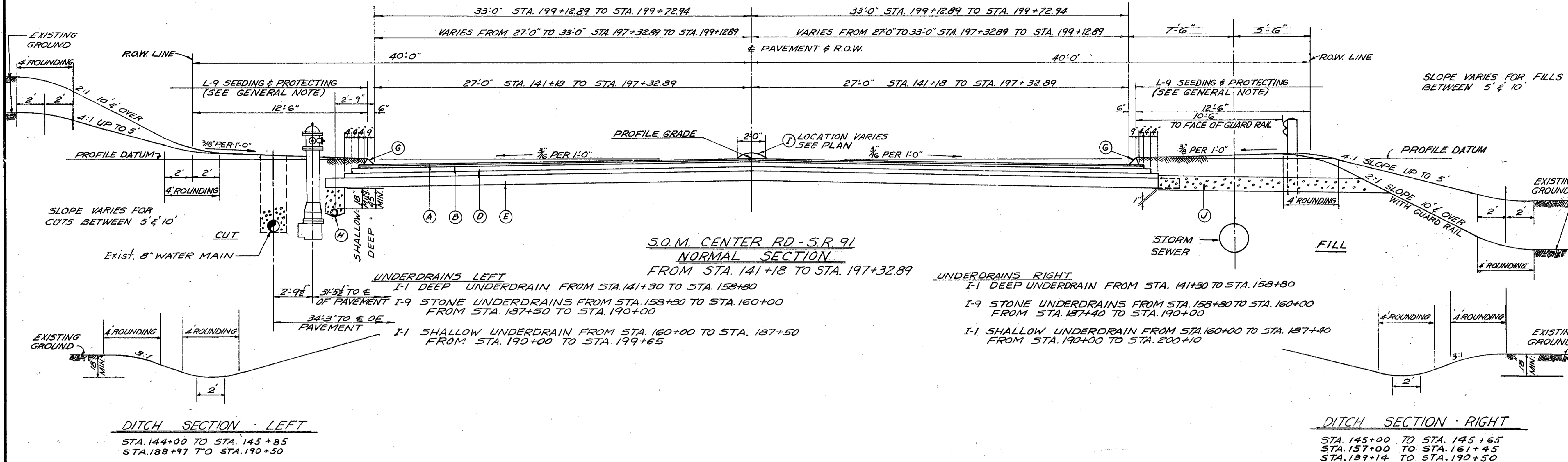
SCALE: 1/4" = 1'-0"

FED. RD. DIVISION	STATE	PROJECT	FISCAL YEAR
2	OHIO	L-662(8)	

2  
59

LAKE COUNTY  
LAK 91 - 2.72

DESIGN SPEED 50 MPH.



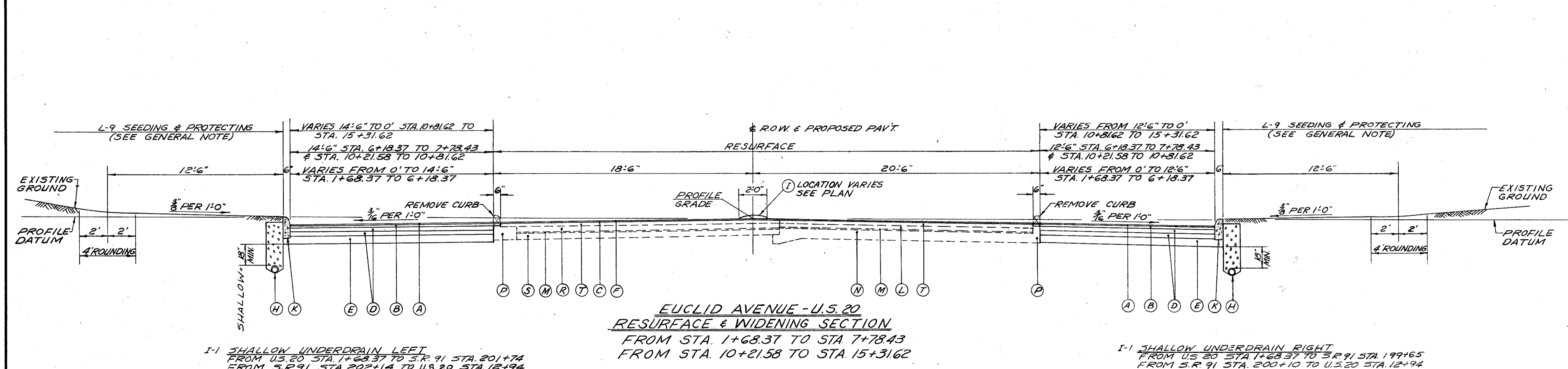
### LEGEND

- (A) T-35 1" ASPHALTIC CONCRETE SURFACE COURSE, TYPE C (70-85)
- (B) B-35 1 1/2" ASPHALTIC CONCRETE LEVELING COURSE (70-85)
- (C) T-30 BITUMINOUS TACK COAT (0.1 GAL. PER SQ. YD.) (SEC. M5.5, M5-2 OR RS-1 SEC. M5.2, RC-1 OR RC-2) AS PER T-30.02
- (D) B-21 7" WATERPROOFED AGGREGATE BASE COURSE (2-3 1/2" COURSES)
- (E) I-22 6" SUBBASE
- (F) B-35 ASPHALTIC CONCRETE PRE-LEVELING COURSE TYPE C (70-85) USED AS DIRECTED BY ENGINEER
- (G) I-24 STD. TYPE 1 ASPHALTIC CONCRETE CURB
- (H) I-1 6" PIPE, CLASS I-3
- (I) I-23 STD. PRECAST CONCRETE TRAFFIC DIVIDERS - 12' INTERVALS BETWEEN DIVIDERS
- (J) I-9 STONE UNDERDRAINS (IN FILLS ONLY, TO BE SPACED AT 50' INTERVALS)
- (K) I-12 CONCRETE CURB STD. TYPE 6
- (L) EXISTING 3" BRICK
- (M) EXISTING SAND CUSHION
- (N) EXISTING 8" CONCRETE BASE
- (P) EXISTING INTEGRAL CONCRETE CURB
- (R) EXISTING 4" BRICK
- (S) EXISTING 5" CONCRETE BASE
- (T) EXISTING 3 1/2" ASPHALTIC CONCRETE SURFACE

NOTES: FOR DETAILS NOT SHOWN SEE STD. DWG. RI-1.  
CROSS SECTIONS SHALL GOVERN OVER TYPICAL SECTIONS WHERE VARIABLE CONDITIONS ARE ENCOUNTERED.  
CUT AND FILL SECTIONS SHOWN ARE INTERCHANGEABLE WITH EITHER SIDE OF ROADWAY.

THICKNESSES SHOWN ARE "DESIGNED" THICKNESSES AS DESCRIBED IN SECTIONS T-35.01, B-35.01 AND B-21.01.

FOR INTERSECTION DETAILS ON S.R. 91, STA. 197+32.89 TO STA. 202+16.09 AND ON U.S.R. 20, STA. 7+78.43 TO STA. 10+21.58, REFER TO SHEET NO. 16.



**ADACHE ASSOCIATES INC., ENGINEERS**  
CLEVELAND 42, OHIO

**TYPICAL SECTIONS**

S.O.M. CENTER ROAD  
(S.R. 91)  
AND EUCLID AVENUE (U.S. 20)

DESIGNED	DRAWN	CHECKED	REVISED	DATE
	T.W.			