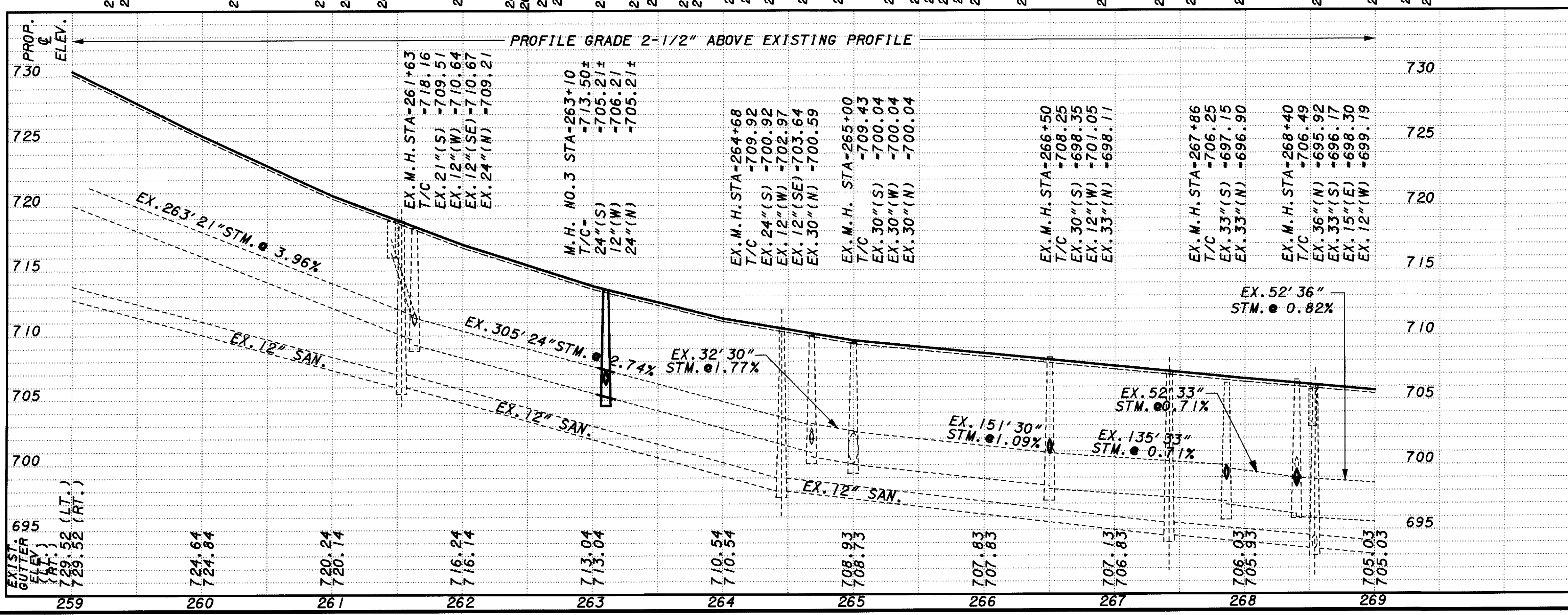
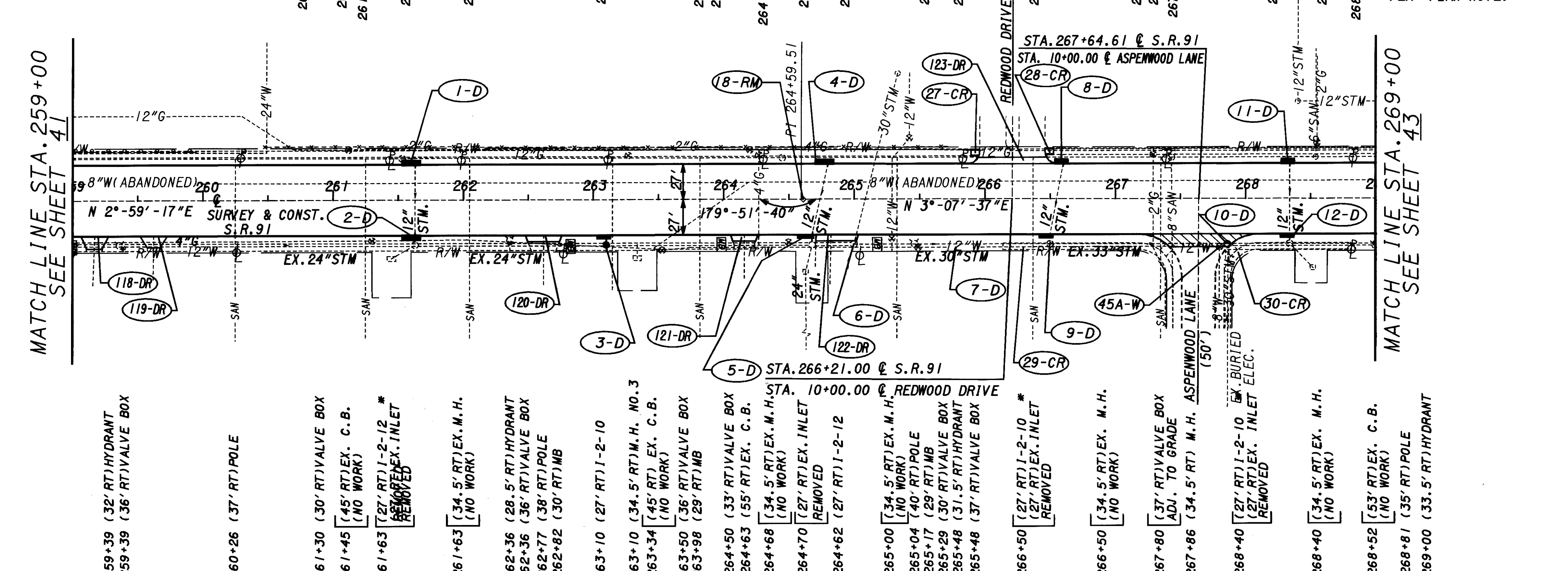


PLOTTED BY: fkonopka
 PLOTTED FROM: i:\users\bkrowse\p\d09864\09864qpa.dgn
 PLOT SUBMITTED: 09-OCT-1998 09:23
 09864QPQ.DGN

CROSS REFERENCE	SHEET
TYPICAL SECTIONS	3-9
CROSS SECTIONS	70-72
PAVEMENT MARKING SHT	101-102
PAVEMENT TRANS. DET.	79
DRIVE DETAILS	82-83
CURB QUANTITIES	21
DRIVE & WALK QTY'S	23
"W" QUANTITIES	25



* NOTE
 UPPER BOX REPLACEMENT ONLY. SEE INLET, NO. 2, BY TYPE, AS PER PLAN NOTE.

REF. NO.	STATION TO STATION	CONDUIT, TYPE				PIPE REMOVED UNDER LIN. FT.	INLET AS PER PLAN	INLET NO. 2-10 AS PER PLAN	INLET NO. 2-12 AS PER PLAN	INLET NO. 2-12, AS PER PLAN	MANHOLE, ADJUSTED TO GRADE, A.P.P.	MANHOLE NO. 3 EACH
		B	C	F	6"							
1-D	261+63 LT.											
2-D	261+63 RT.											
3-D	263+10 RT.	2	8	4								
4-D	264+80 LT.											
5-D	264+62 RT.	2	8	10	10							
8-D	266+60 LT.											
9-D	266+50 RT.											
10-D	267+86 RT.											
11-D	268+40 LT.											
12-D	268+40 RT.											
TOTALS CARRIED TO DRAINAGE SUB-SUMMARY												
		4	16	4	10	10	1	2	1	3	1	1

PLAN & PROFILE SHEET
 S.R. -91
 STA. 259+00 TO STA. 269+00

CUYAHOGA COUNTY
 LAKE COUNTY
 CUY/LAK-91-15.42/0.00

42
 104

SCALE IN FEET
 0 50 100