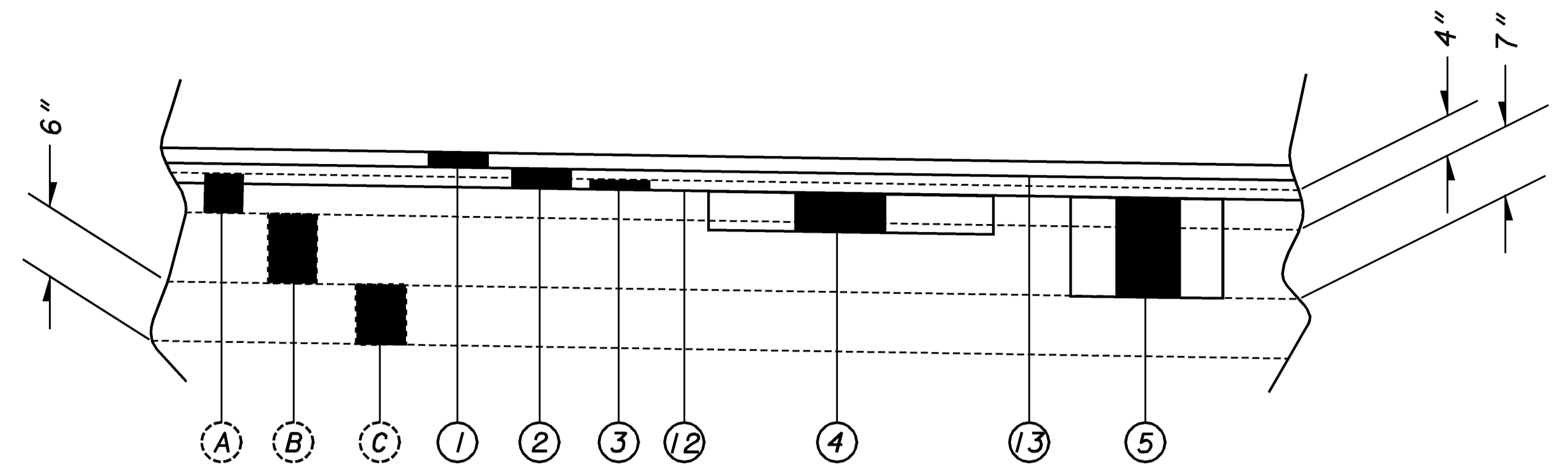
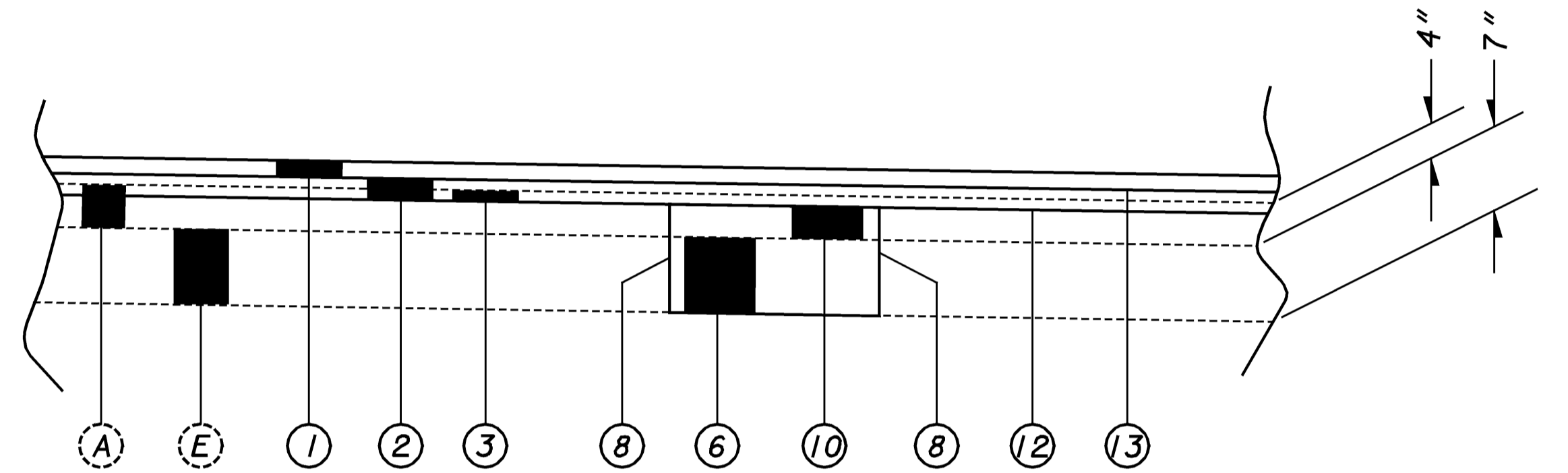


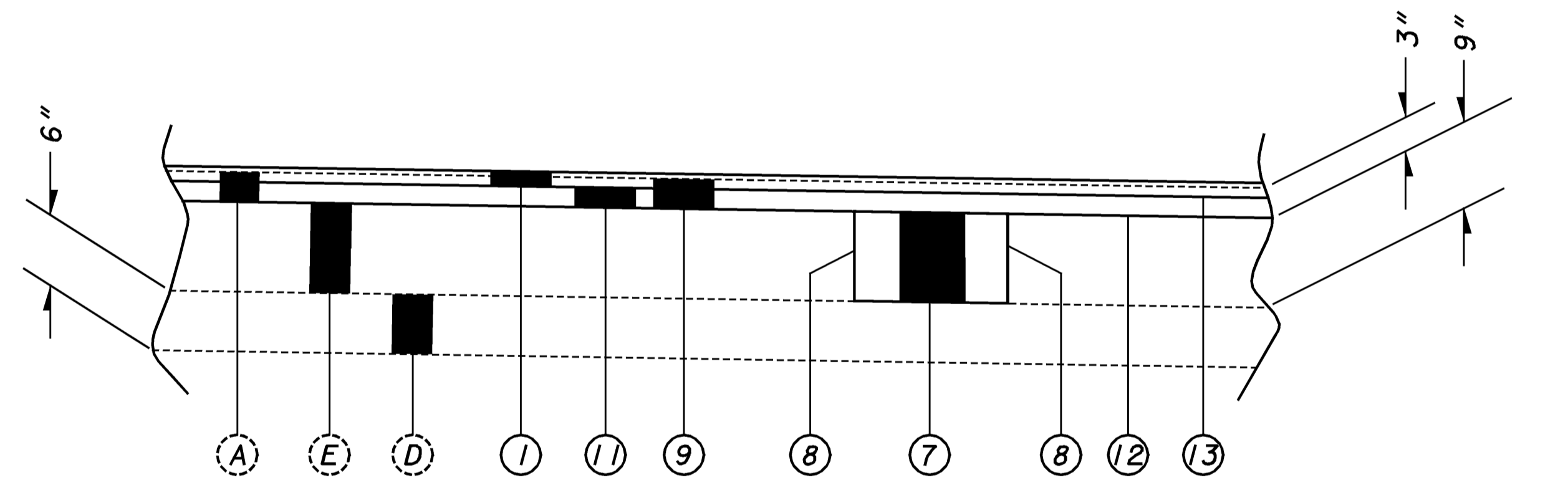
FULL DEPTH ASPHALT PAVEMENT



CONCRETE BASE PAVEMENT



CONCRETE BASE PAVEMENT  
 STA 202+84.70 TO STA 212+27.53  
 STA 219+08.09 TO STA 225+74.62



EXISTING PAVEMENT LEGEND

- (A) ASPHALT CONCRETE
- (B) WATERPROOFED AGGREGATE BASE
- (C) STABILIZED CRUSHED AGGREGATE
- (D) SUBBASE
- (E) CONCRETE BASE
- (F) REINFORCED CONCRETE BASE

PROPOSED PAVEMENT LEGEND

- (1) 446 - ASPHALT CONCRETE SURFACE COURSE, TYPE 1H, AS PER PLAN (1 1/2")
- (2) 446 - ASPHALT CONCRETE INTERMEDIATE COURSE, TYPE 2, PG 64-22 (2")
- (3) 254 - PAVEMENT PLANING (1")
- (4) 251 - PARTIAL DEPTH PAVEMENT REPAIR
- (5) 253 - PAVEMENT REPAIR
- (6) 255 - FULL DEPTH PAVEMENT REMOVAL AND RIGID REPLACEMENT, CLASS C, AS PER PLAN A
- (7) 255 - FULL DEPTH PAVEMENT REMOVAL AND RIGID REPLACEMENT, CLASS C, AS PER PLAN B
- (8) 255 - FULL DEPTH PAVEMENT SAWING
- (9) 202 - WEARING COURSE REMOVED (3")
- (10) 301 - BITUMINOUS AGGREGATE BASE, PG64-22 (3")
- (11) 448 - ASPHALT CONCRETE INTERMEDIATE COURSE, TYPE 2, PG 64-22 (2")
- (12) 407 - TACK COAT
- (13) 407 - TACK COAT FOR INTERMEDIATE COURSE

CALCULATED  
EMK

CHECKED  
ENF

PAVEMENT REPAIR DETAILS

CUYAHOGA COUNTY  
 LAKE COUNTY  
 CUY/LAK-91-15.42/0.00

77  
104

PLOTTED BY: fkonopka  
 PLOTTED FROM: i:\users\bkruse\p\d\09864\09864gae.dgn  
 PLOT SUBMITTED: 09-OCT-1998 11:44  
 09864GAE.DGN