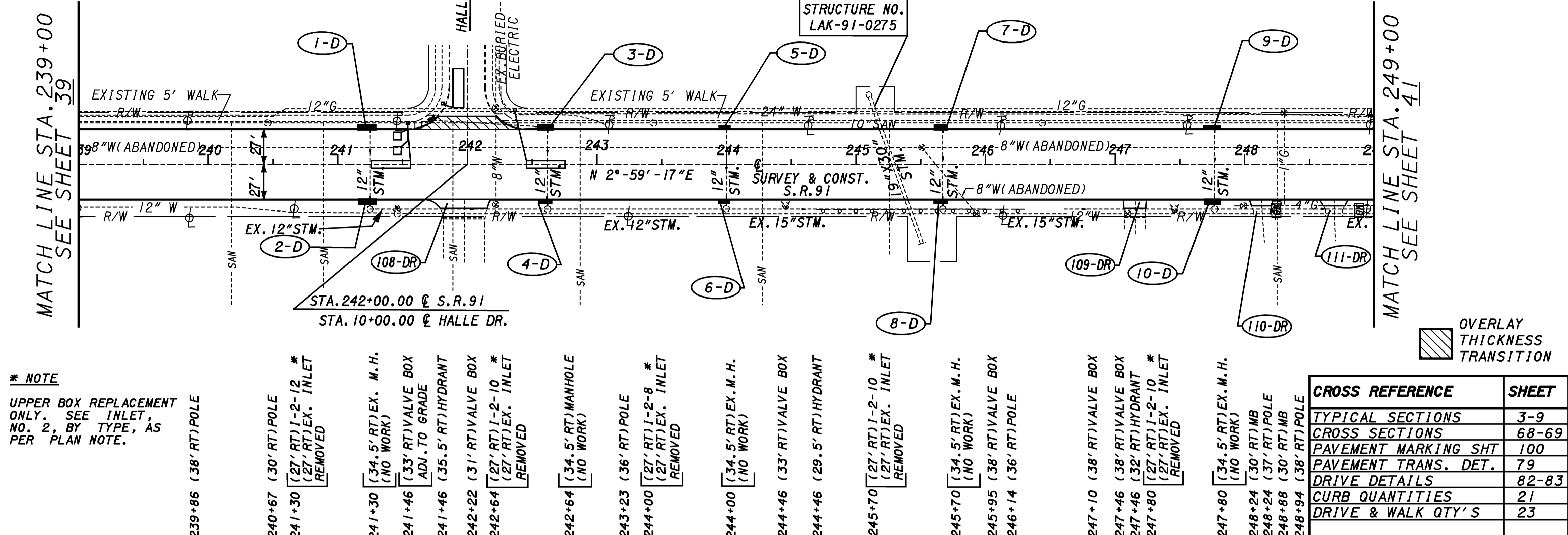
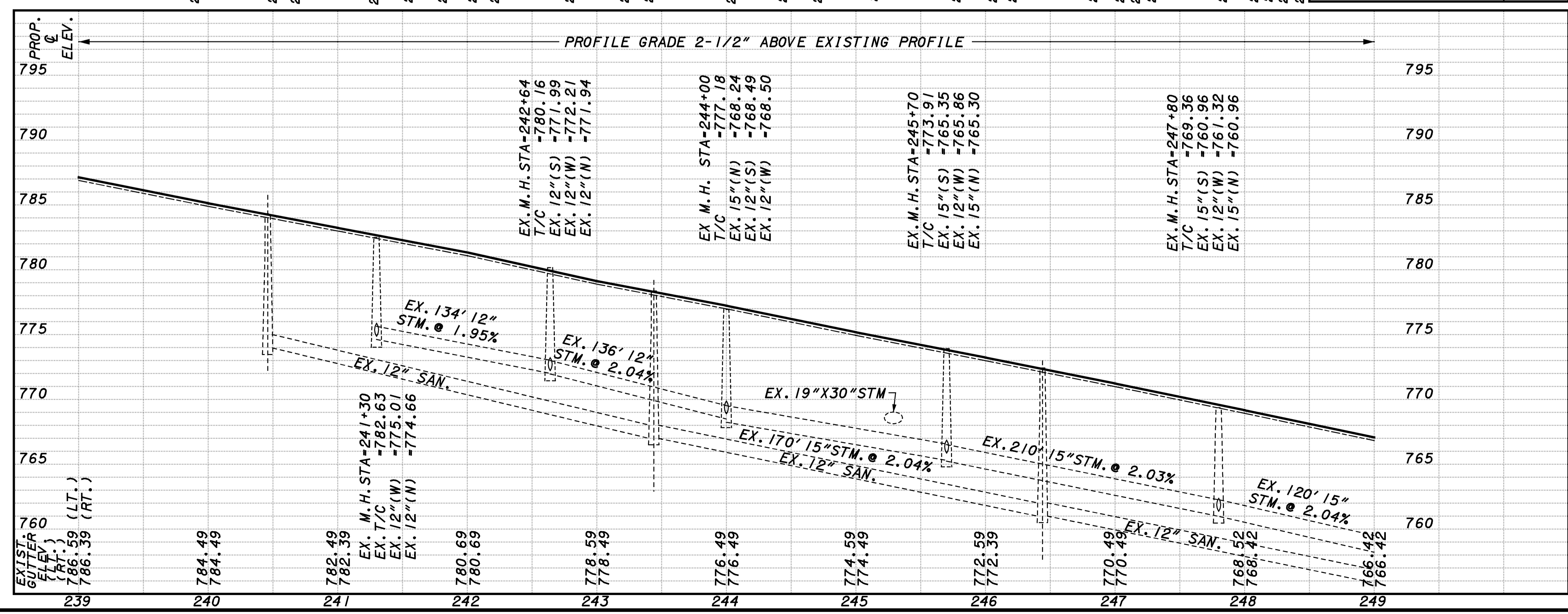


PLOTTED BY: fkonopka
 PLOTTED FROM: \\users\bkruse\p\d\09864\09864gpo.dgn
 09864GPO.DGN
 PLOT SUBMITTED: 09-OCT-1998 09:22



*** NOTE**
 UPPER BOX REPLACEMENT ONLY. SEE INLET, NO. 2, BY TYPE, AS PER PLAN NOTE.

CROSS REFERENCE	SHEET
TYPICAL SECTIONS	3-9
CROSS SECTIONS	68-69
PAVEMENT MARKING SHT	100
PAVEMENT TRANS. DET.	79
DRIVE DETAILS	82-83
CURB QUANTITIES	21
DRIVE & WALK QTY'S	23

REF. NO.	STATION TO STATION	603			604			604			604			604		
		CONDUIT, TYPE			CATCH BASIN NO. 3	INLET NO. 2-8, AS PER PLAN	INLET NO. 2-10, AS PER PLAN	INLET NO. 2-12, AS PER PLAN	CATCH BASIN NO. 3	INLET NO. 2-8, AS PER PLAN	INLET NO. 2-10, AS PER PLAN	INLET NO. 2-12, AS PER PLAN	CATCH BASIN NO. 3	INLET NO. 2-8, AS PER PLAN	INLET NO. 2-10, AS PER PLAN	INLET NO. 2-12, AS PER PLAN
		B	C	F												
1-D	241+30 LT.															
2-D	241+30 RT.															
3-D	242+64 LT.															
4-D	242+64 RT.															
5-D	244+00 LT.															
6-D	244+00 RT.															
7-D	245+70 LT.															
8-D	245+70 RT.															
9-D	247+80 LT.															
10-D	247+80 RT.															
TOTALS CARRIED TO DRAINAGE SUB-SUMMARY																