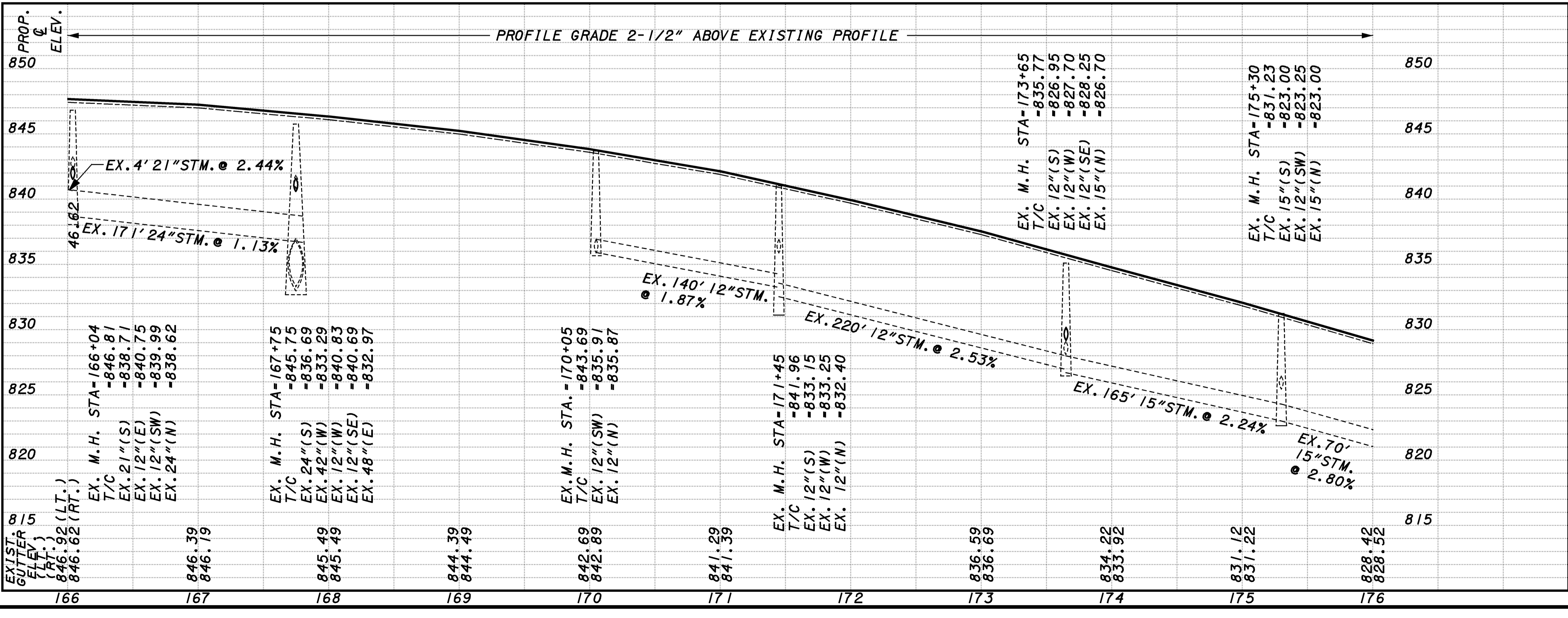


SR - 91 CENTERLINE
 P.I. = STA. 174+82.17
 $\Delta = 8^{\circ} - 09' - 04''$ LT.
 $D_c = 0^{\circ} - 45' - 00''$
 $R = 7639.44'$
 $T = 544.33'$
 $L = 1086.82'$
 $E = 19.38'$



CROSS REFERENCE	SHEET
TYPICAL SECTIONS	3-9
CROSS SECTIONS	57-59
PAVEMENT MARKING SHT	95
PAVEMENT TRANS. DET.	79
DRIVE DETAILS	82-83
CURB QUANTITIES	21
DRIVE & WALK QTY'S	22-23
"W" QUANTITIES	25

REF. NO.	STATION TO STATION	CONDUIT, TYPE			INLET NO. 2-6	INLET NO. 2-8	INLET NO. 2-10	MANHOLE ADJUSTED TO GRADE AS PER PLAN EACH
		B	C	F				
		12"	12" 18"	6"				
1-D	166+04 RT	2		15			1	
2-D	167+75 RT.	2		10			1	
3-D	167+70 LT.	2		10				
4-D	170+00 RT.	2	8	10				
5-D	170+00 LT.	2		10				
6-D	171+45 RT.	2	8	10				
7-D	171+16 LT.	2		10				
8-D	172+68 LT.	2	2	10				
9-D	173+65 RT.	2	8	10				
10-D	174+78 LT.	2	2	10				
11-D	173+30 RT.	2	8	10				
TOTALS CARRIED TO DRAINAGE SUB-SUMMARY		22	36	115	4	6	2	