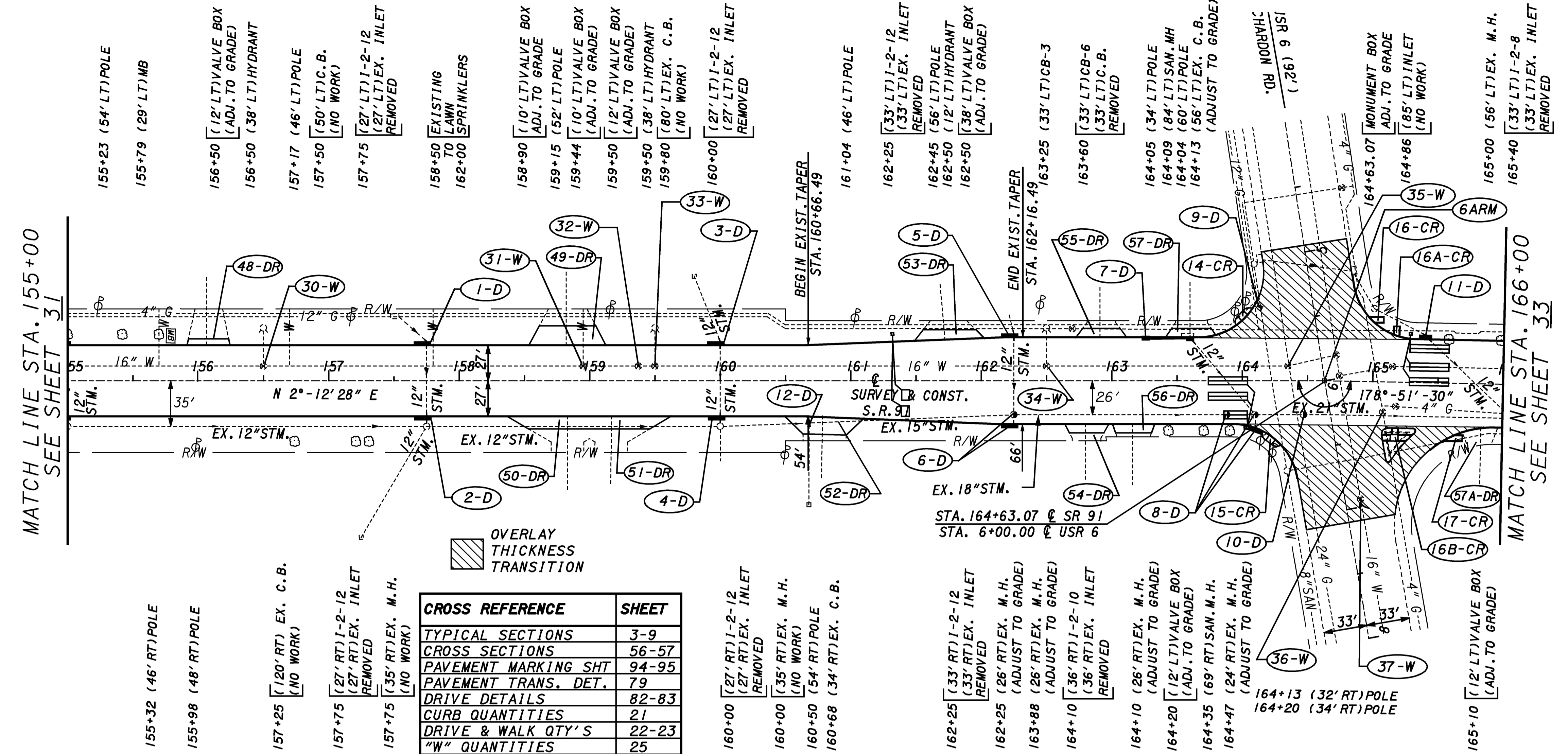
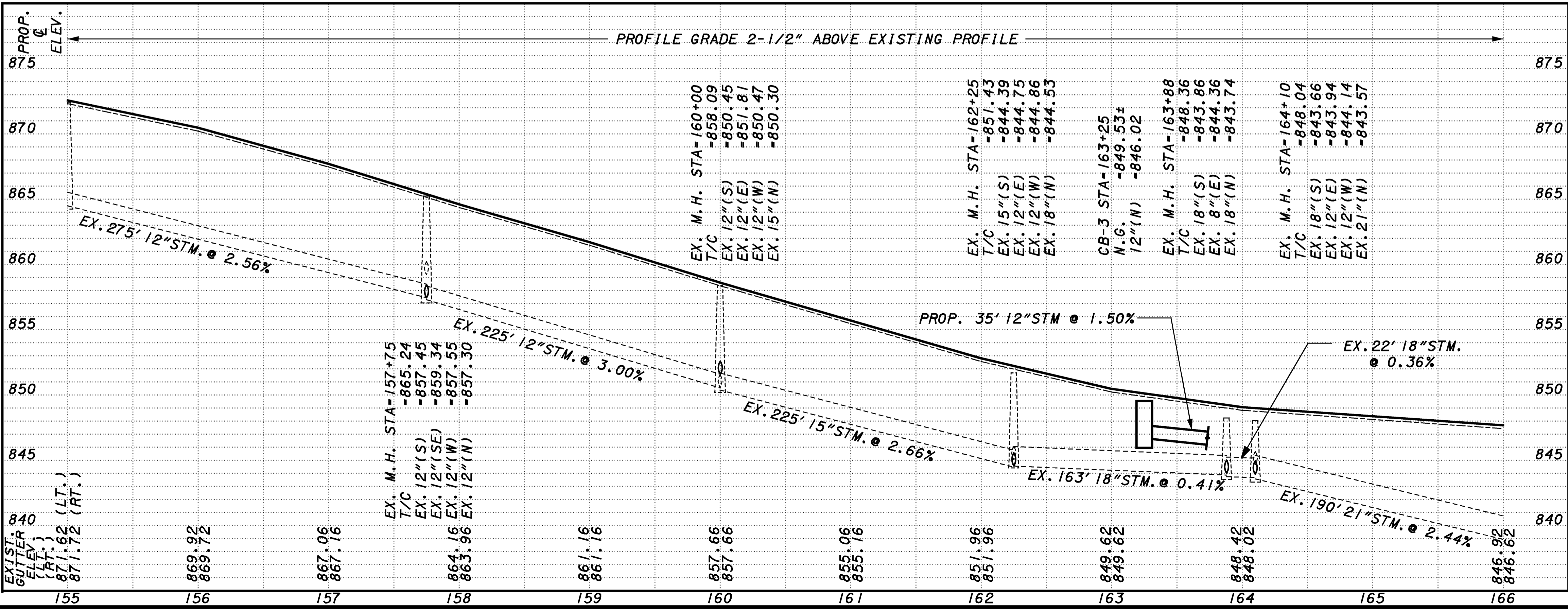


PLOTTED BY: fkonopka
 PLOTTED FROM: \\users\bkuse\p\d\09864\09864.gpg.dgn
 09864GPG.DGN
 PLOT SUBMITTED: 09-OCT-1998 09:15



| REF. NO. | STATION TO STATION | CONDUIT TYPE | | | | TOTALS CARRIED TO DRAINAGE SUB-SUMMARY |
|--|----------------------|--------------|-------|-------|------|--|
| | | 12" B | 12" C | 12" F | 6" F | |
| 1-D | 157+75 LT. | 2 | 2 | 10 | 10 | 1 |
| 2-D | 157+75 RT. | 2 | 2 | 10 | 10 | 1 |
| 3-D | 160+00 LT. | 2 | 2 | 10 | 10 | 1 |
| 4-D | 160+00 RT. | 2 | 2 | 10 | 10 | 1 |
| 5-D | 162+25 LT. | 2 | 2 | 10 | 10 | 1 |
| 6-D | 162+25 RT. | 2 | 2 | 10 | 10 | 1 |
| 7-D | 163+25 TO 163+60 LT. | 37 | 10 | 10 | 10 | 1 |
| 8-D | 163+88 TO 164+10 RT. | 2 | 2 | 10 | 10 | 1 |
| 9-D | 164+13 LT. | 2 | 2 | 10 | 10 | 1 |
| 10-D | 164+47 RT. | 2 | 2 | 10 | 10 | 1 |
| 11-D | 165+40 LT. | 2 | 2 | 10 | 10 | 1 |
| 12-D | 160+68 RT. | 2 | 2 | 10 | 10 | 1 |
| TOTALS CARRIED TO DRAINAGE SUB-SUMMARY | | 53 | 2 | 22 | 90 | 1 |