

Anchor Assembly, Type T Item 606 Guardrail (Type 5 shown)

**NOTES**

**FOR DETAILS NOT SHOWN:** See SCD's GR-1.1M, GR-1.2M and other Drawings pertaining to design of specific guardrail types.

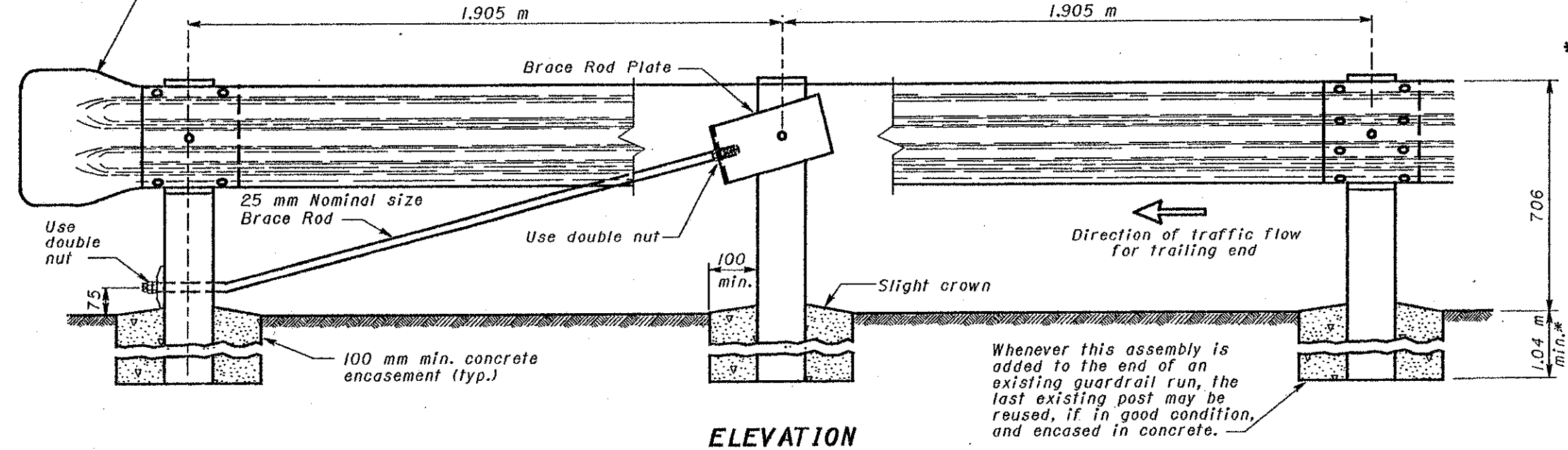
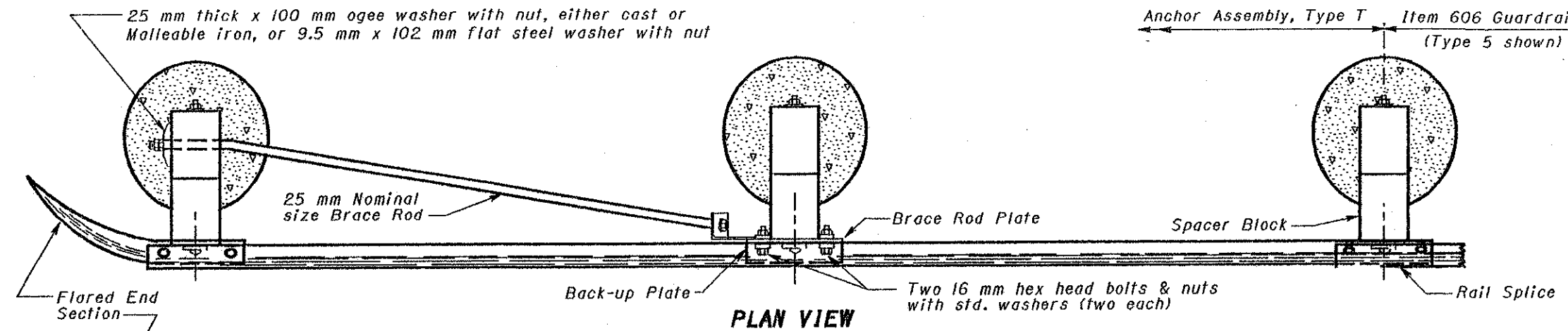
**WASHERS:** All washers indicated are standard galvanized steel of the appropriate size.

**POSTS:** Posts shall be the same as used on the adjacent guardrail, with 100 mm minimum concrete encasement.

**SPACER BLOCKS:** Blocks may be notched in the field, in a manner satisfactory to the Engineer, to accommodate the installation of the brace rod plate 16 mm attachment bolts.

**BRACE ROD ASSEMBLY:** Rods shall be galvanized and develop a tensile strength of at least 178 kN.

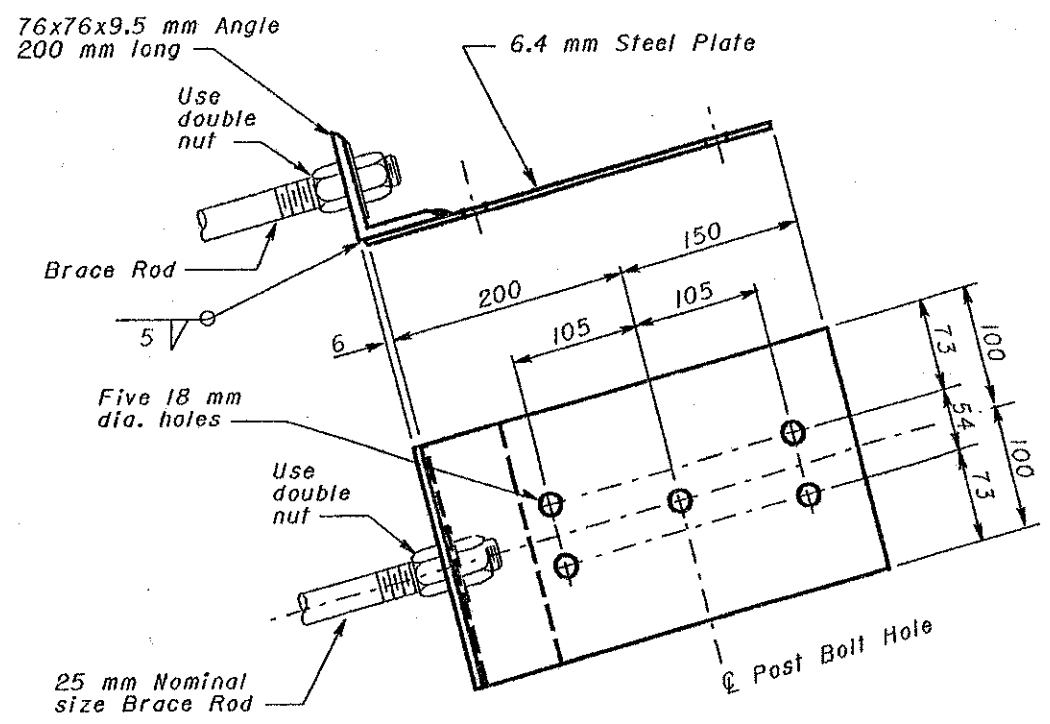
**\* FOR SPECIFIC POST EMBEDMENT:** See SCD GR-1.2M for depth requirements.



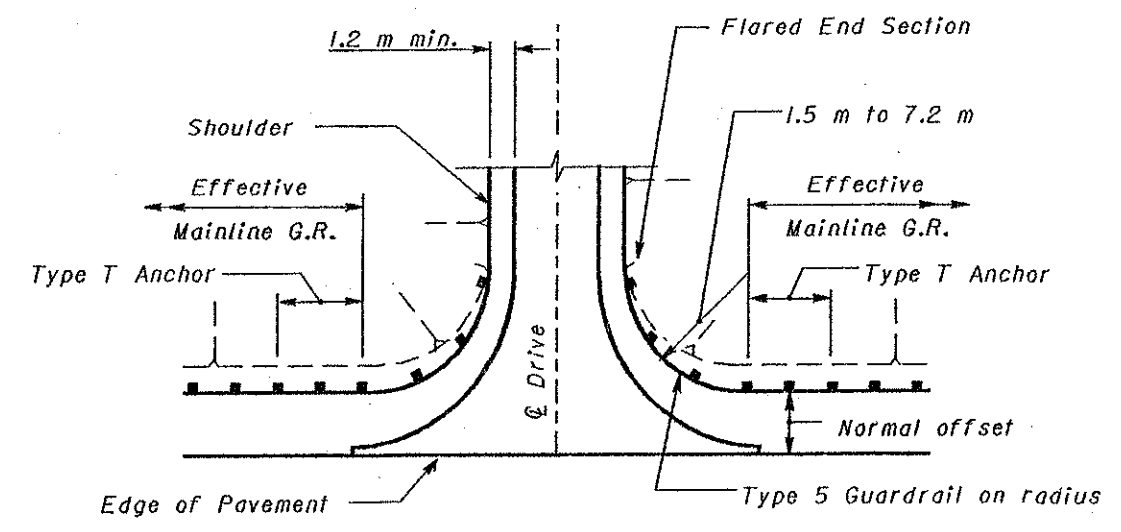
Whenever this assembly is added to the end of an existing guardrail run, the last existing post may be reused, if in good condition, and encased in concrete.

**ELEVATION**

**TYPE T**



**BRACE ROD PLATE**



**DRIVEWAY OPENING**

All dimensions are in millimeters unless otherwise noted.



|  |                             |
|--|-----------------------------|
| OHIO DEPARTMENT OF TRANSPORTATION            |                             |
| <b>TYPE T<br/>ANCHOR ASSEMBLY</b>            | DATE<br>4-21-95<br>10-21-97 |
| STANDARD CONSTRUCTION DRAWING <b>GR-4.2M</b> |                             |
| APPROVED <i>Randy F. Luskland</i>            |                             |