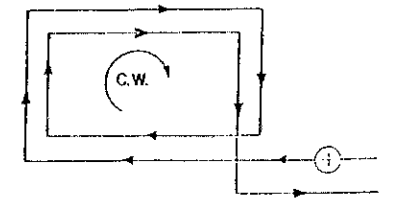


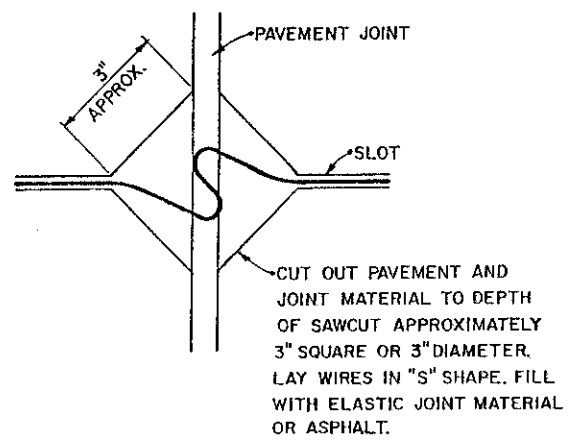
- NOTES:**
- SAWSLOTS AND PROBE HOLES SHALL BE THOROUGHLY CLEAN AND DRIED PRIOR TO INSTALLATION OF WIRES, SENSOR AND SEALANT.
 - WIRE INSTALLATIONS IN NEW ASPHALT MAY BE SAWED AND EMBEDDED WITH SEALANT IN A SUB-SURFACE COURSE WITH SUBSEQUENT COVERING BY THE SURFACE COURSE, SUBJECT TO APPROVAL OF THE ENGINEER.
 - IN CASES WHERE THE LATERAL DIMENSION OF THE LOOP WOULD BE LESS THAN EIGHT (8) FEET, THE LONGITUDINAL DIMENSION SHALL BE INCREASED TO OBTAIN A MINIMUM AREA OF 48 SQUARE FEET, UNLESS THE SMALLER DIMENSIONS ARE SPECIFICALLY REQUIRED BY THE PLANS.
 - THE MAGNETOMETER HOLE SIZE SHALL BE APPROXIMATELY 3/4" INCH LARGER THAN THE DETECTOR PROBE DIAMETER AND A DEPTH AS RECOMMENDED BY THE MANUFACTURER OR AS DIRECTED BY THE ENGINEER.
 - NO SAW SLOT SHALL BE LOCATED WITHIN 12 INCHES OF A LONGITUDINAL OR TRANSVERSE JOINT IN PCC PAVEMENTS, IF THE SLOT IS PARALLEL TO THE JOINT.
 - FIELD ADJUSTMENTS OF DETECTOR LOCATIONS OR SIZES SHALL BE MADE TO AVOID DETECTOR LOCATIONS WHICH WOULD PASS THROUGH OR ENCOMPASS MAJOR OBSTRUCTIONS SUCH AS MANHOLES, AND IN ORDER TO MINIMIZE CROSSING OR CUTTING ADJACENT TO PAVEMENT JOINTS. IN AREAS OF POOR PAVEMENT CONDITION, THE SAWSLOT DEPTH SHALL BE INCREASED TO INSURE ADEQUATE WIRE EMBEDMENT. ALL FIELD ADJUSTMENTS SHALL BE SUBJECT TO APPROVAL OF THE ENGINEER.
 - LOOP DETECTOR WIRE TO LEAD-IN CABLE SPLICES WITHIN EPOXY ENCAPSULATED SPLICE ENCLOSURES SHALL BE SOLDERED.
 - IF A PULLBOX IS NOT SPECIFIED ON THE PLANS, THE SPLICE SHALL BE MADE IN THE FIRST ENTERED POLE OR PEDESTAL, EXCEPT WHERE THE CONTROLLER CABINET IS MOUNTED ON THE POLE OR PEDESTAL, IN WHICH CASE THE LOOP WIRES SHALL BE ROUTED DIRECTLY INTO THE CABINET.

TYPICAL SAW SLOT INSTALLATION

LOOP WIRE CONSTRUCTION	
LOOP PERIMETER	NUMBER OF TURNS
LESS THAN 40 FEET	3
40 TO 160 FEET	2
OVER 160 FEET	1



TYPICAL POLARITY MARKING



JOINT CROSSING DETAIL IN P.C.C. PAVEMENTS

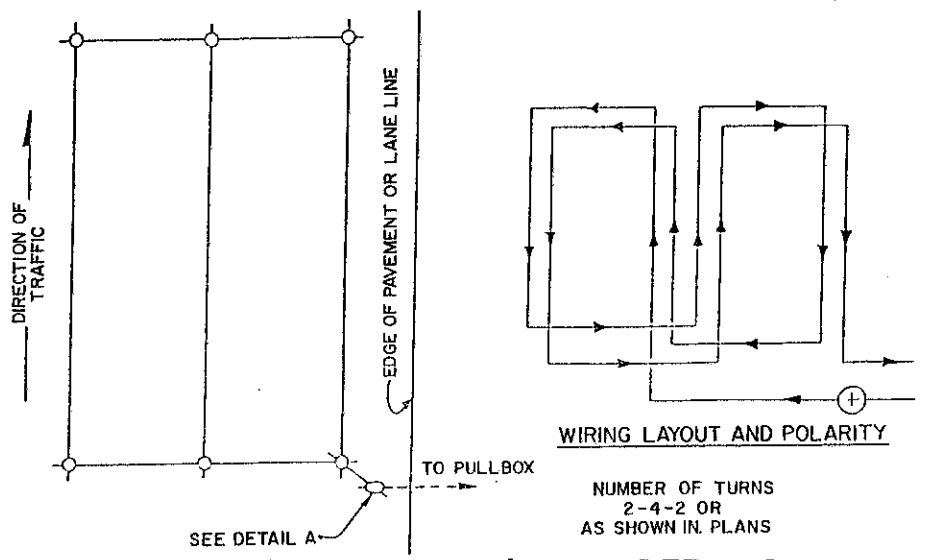


FIGURE 8 (QUADRUPOLE) LOOP DETAILS

ALL ITEMS SHALL CONFORM TO C & M SPECIFICATIONS 632, 625 AND 732, UNLESS OTHERWISE SPECIFIED.

BUREAU OF DESIGN SERVICES DIVISION OF HIGHWAYS OHIO DEPARTMENT OF TRANSPORTATION	
TRAFFIC SIGNALS	DATE 9/5/75
VEHICLE DETECTOR INSTALLATION DETAILS	4/11/79 8/29/84
STANDARD CONSTRUCTION DRAWING TC-82.10	
APPROVED: [Signature] Engineer of Design Services	