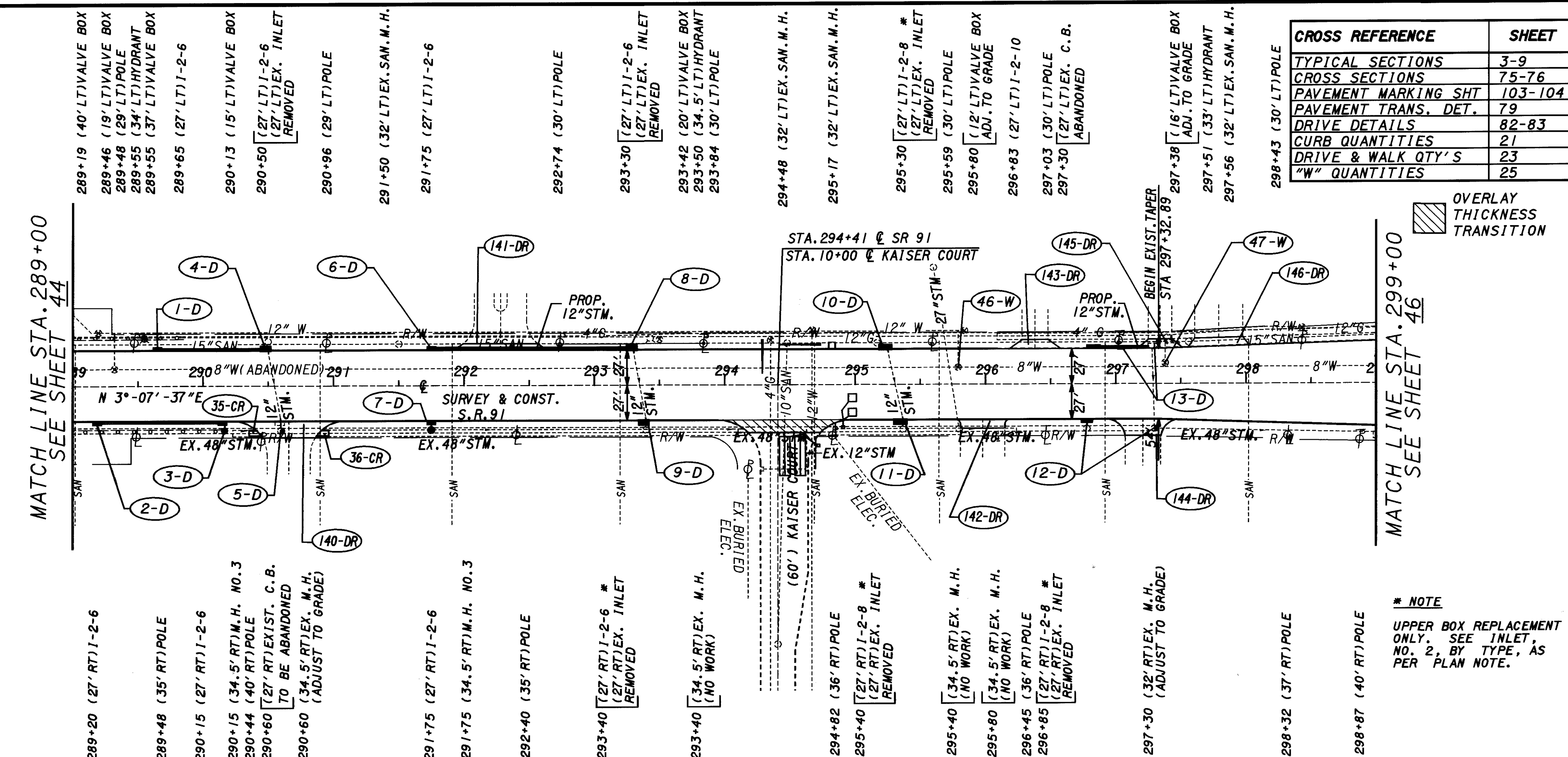
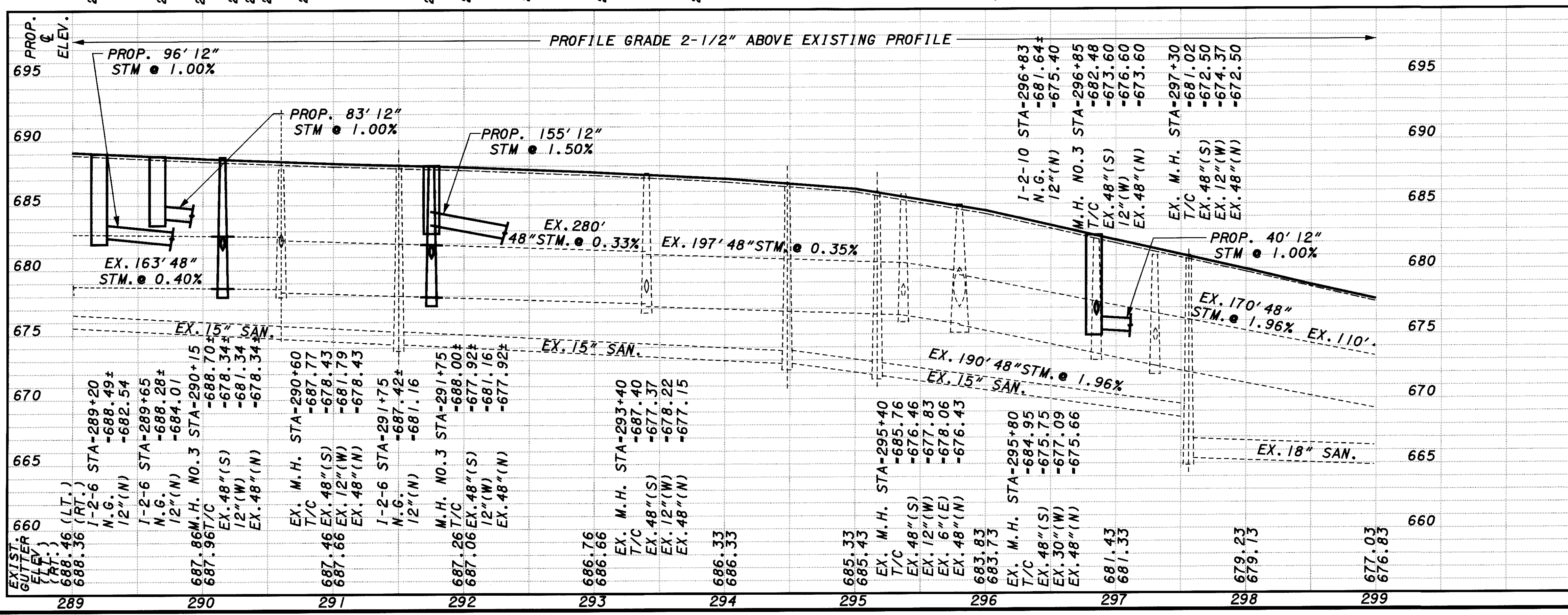


PLOTTED BY: fkonopka
 PLOTTED FROM: i:\users\bkruse\p09864\09864qpt.dgn
 PLOT SUBMITTED: 09-OCT-1998 09:25
 09864GPT.DGN



CROSS REFERENCE	SHEET
TYPICAL SECTIONS	3-9
GROSS SECTIONS	75-76
PAVEMENT MARKING SHT	103-104
PAVEMENT TRANS. DET.	79
DRIVE DETAILS	82-83
CURB QUANTITIES	21
DRIVE & WALK QTY'S	23
"W" QUANTITIES	25

OVERLAY THICKNESS TRANSITION

* NOTE
 UPPER BOX REPLACEMENT ONLY. SEE INLET, NO. 2, BY TYPE, AS PER PLAN NOTE.

REF. NO.	STATION TO STATION	202			603			TOTALS CARRIED TO DRAINAGE SUB-SUMMARY
		CATCH BASIN ABANDONED/REMOVED	CATCH BASIN NO. 3	CONDUIT, TYPE	CATCH BASIN NO. 3	CONDUIT, TYPE	CONDUIT, TYPE	
		EACH	EACH	CONDUIT, TYPE	EACH	EACH	EACH	
		12" 12" LIN. FT.	6" 6" LIN. FT.	CONDUIT, TYPE	12" 12" LIN. FT.	6" 6" LIN. FT.	CONDUIT, TYPE	
1-D	289+65 TO 289+50 LT			83				
2-D	289+20 TO 290+15 RT			96				
3-D	290+15 RT.			8				
4-D	290+50 LT.			2				
5-D	290+60 RT.			8				
6-D	291+75 TO 293+30 LT			155				
7-D	291+75 RT.			8				
8-D	293+30 LT.			2				
9-D	293+40 RT.							
10-D	295+30 LT.							
11-D	295+40 RT.							
12-D	296+85 & 297+30 RT.			40				
13-D	296+85 TO 297+30 LT.							
TOTALS CARRIED TO DRAINAGE SUB-SUMMARY		2		12	390	8	30	