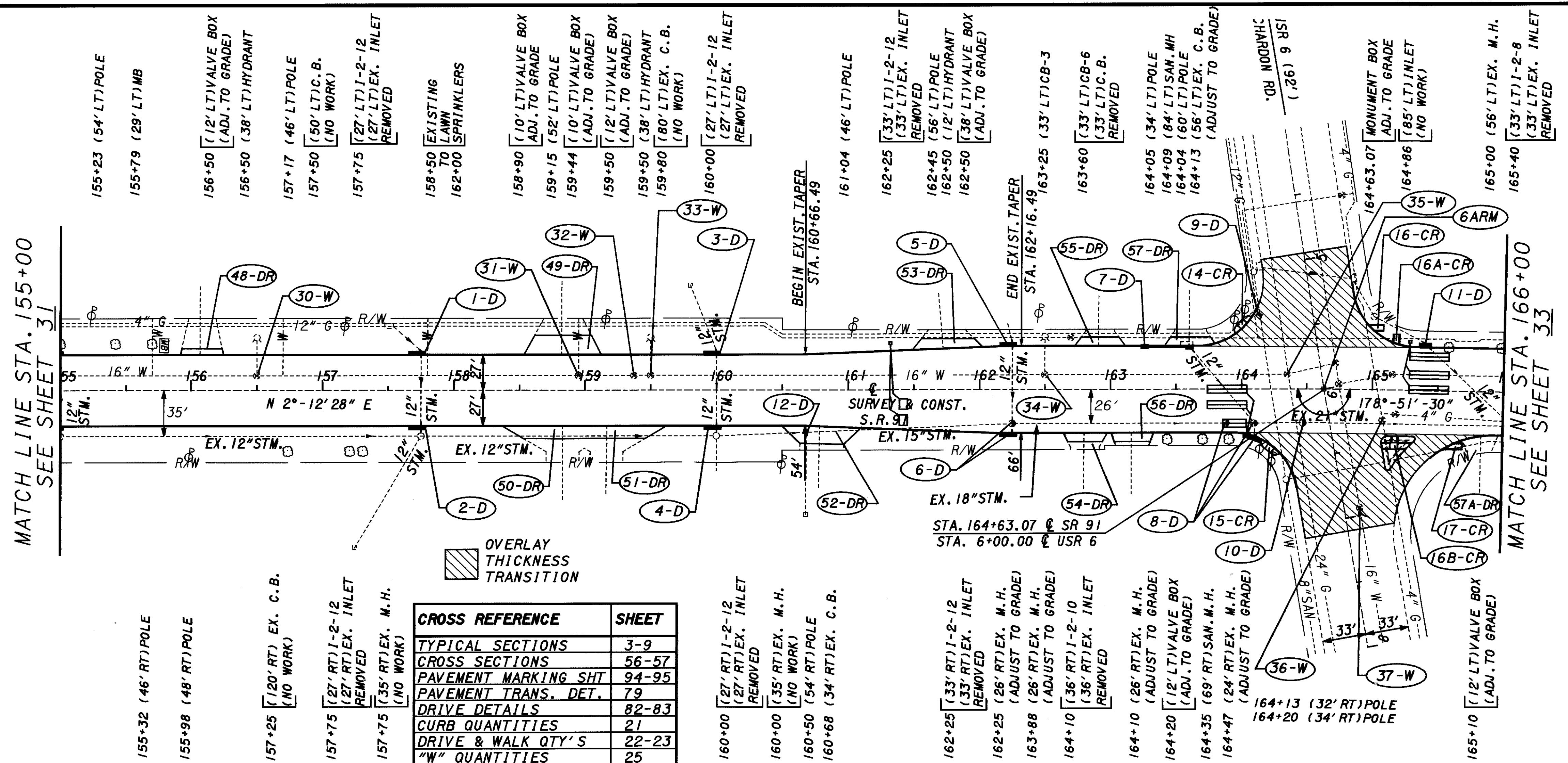
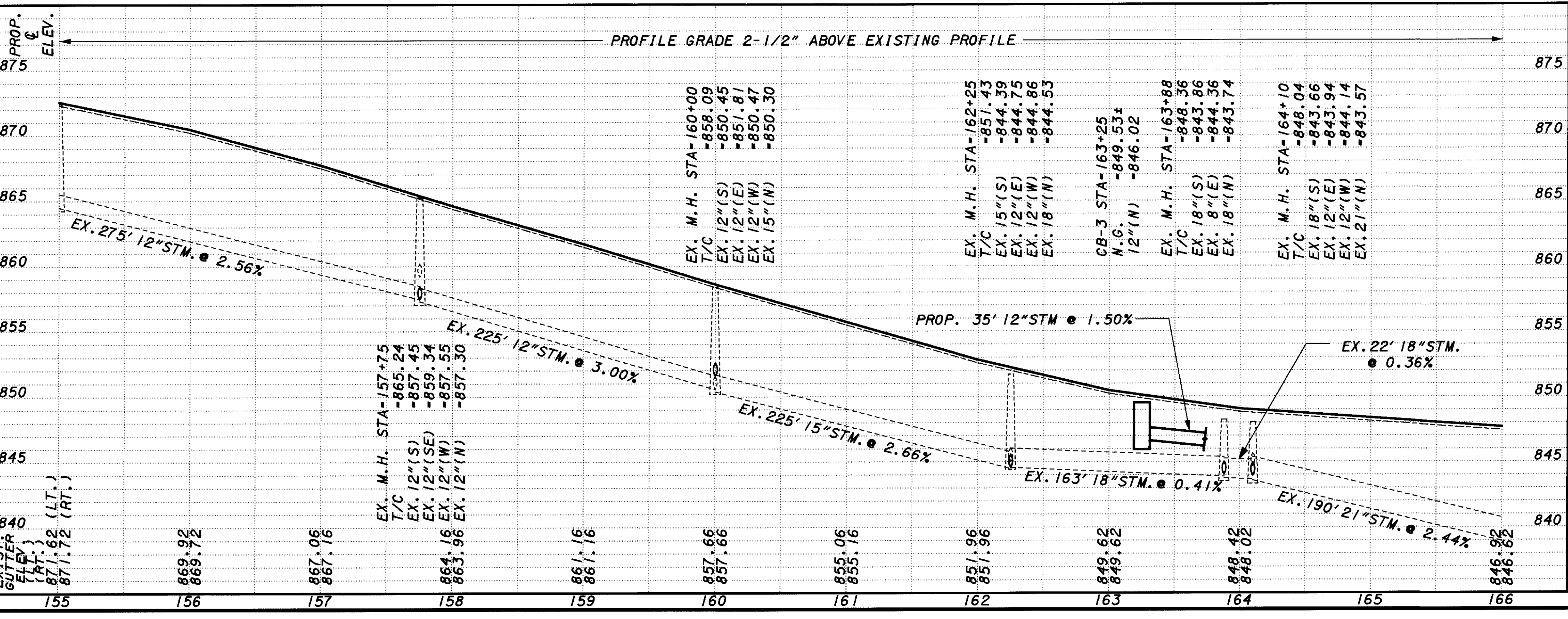


PLOTTED BY: fkonopka
 PLOTTED FROM: i:\Users\bkruse\p\d09864\09864.dgn
 PLOT SUBMITTED: 09-OCT-1998 09:15



CROSS REFERENCE	SHEET
TYPICAL SECTIONS	3-9
CROSS SECTIONS	56-57
PAVEMENT MARKING SHT	94-95
PAVEMENT TRANS. DET.	79
DRIVE DETAILS	82-83
CURB QUANTITIES	21
DRIVE & WALK QTY'S	22-23
"W" QUANTITIES	25

REF. NO.	STATION TO STATION	CONDUIT TYPE				604	604	604	604	604	604	604	604	604	604	604
		B	C	F	6"											
1-D	157+75 LT.	2	2	10												
2-D	157+75 RT.	2	2	10												
3-D	160+00 LT.	2	2	10												
4-D	160+00 RT.	2	2	10												
5-D	162+25 LT.	2	2	10												
6-D	162+25 RT.	2	2	10												
7-D	163+25 TO 163+60 LT.	37	37	10												
8-D	163+88 TO 164+10 RT.	2	2	10												
9-D	164+13 LT.	2	2	10												
10-D	164+47 RT.	2	2	10												
11-D	165+40 LT.	2	2	10												
12-D	160+68 RT.															
TOTALS CARRIED TO DRAINAGE SUB-SUMMARY		53	2	22	90											